

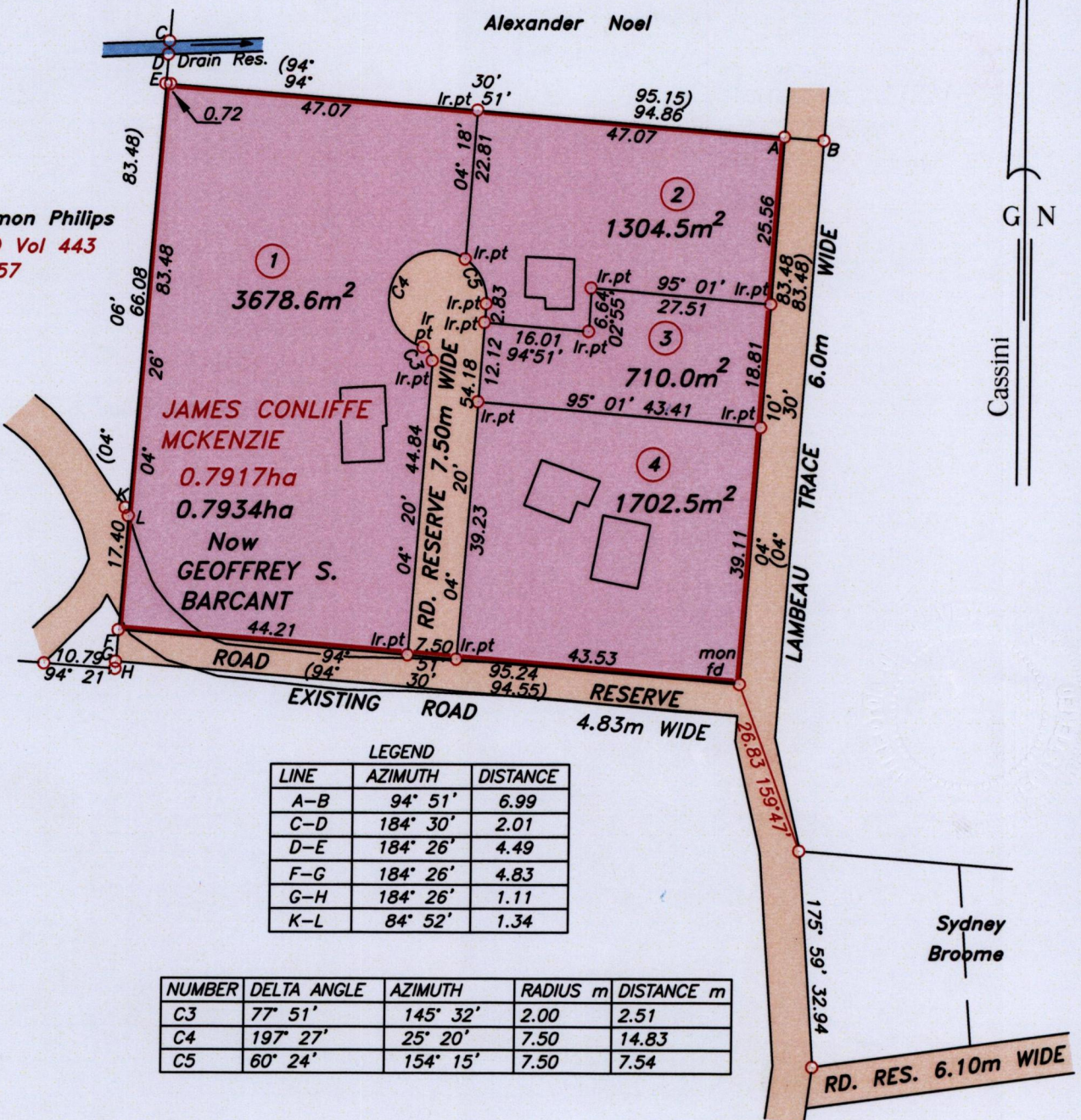
U.P.R.N.....  
R.P.O Vol. 777 Fol. 61  
C.T Vol. Fol.

Cadastral Sheet 1.17.N <sup>1F</sup>/<sub>6/d</sub>  
Ward of Tobago  
Parish of St. Andrew  
LAMBEAU

Vide Bk 738 Fol 113  
Bk 1279 Fol 202  
Survey Order No 4/34

1652/38

Solomon Philips  
R.P.O Vol 443  
Fol: 57



LEGEND

LINE	AZIMUTH	DISTANCE
A-B	94° 51'	6.99
C-D	184° 30'	2.01
D-E	184° 26'	4.49
F-G	184° 26'	4.83
G-H	184° 26'	1.11
K-L	84° 52'	1.34

NUMBER	DELTA ANGLE	AZIMUTH	RADIUS m	DISTANCE m
C3	77° 51'	145° 32'	2.00	2.51
C4	197° 27'	25° 20'	7.50	14.83
C5	60° 24'	154° 15'	7.50	7.54

Orig: Bk. 738 : 113

Approved *[Signature]*  
Director of Surveys 9/16/13

SCALE 1:1000

○ Denotes iron found, except otherwise stated.  
Bearings are grid based on solar observations

Distances are in metres

PLAN of 4 parcels of land coloured pink in the Ward of Tobago  
Containing together seven thousand three hundred and ninety five point six square metres.  
Surveyed by me, with due authority on 10th October 2001 & 9th January 2002.  
In accordance with Regulation 25 (1) of the Land Surveyors' Regulations 1998, I certify that this plan is correct.

Checked by *[Signature]*  
Entered.....

*[Signature]*  
25th July  
Trinidad & Tobago Land Surveyor..... 2012.