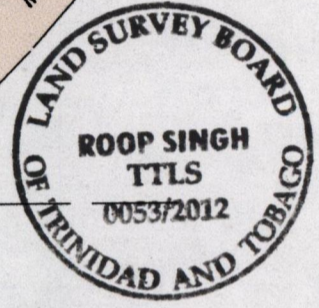
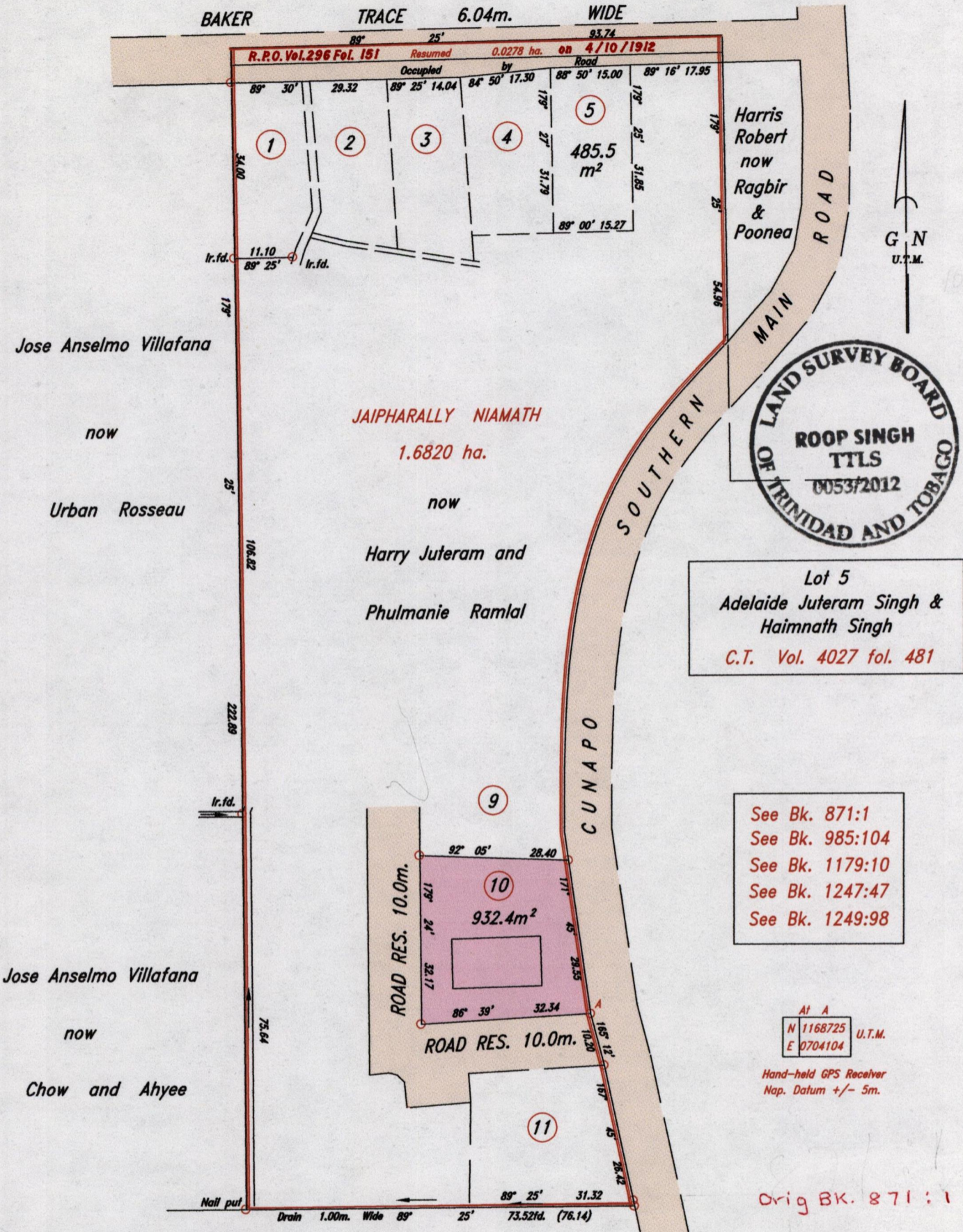


R.P.O. Vol. 3 Fol. 399  
C.T. Vol. 1096 Fol. 341

Cadastral Sheet E.2.A. 25F  
Ward of Turure 3/b  
County of St. Andrew



Lot 5  
Adelaide Juteram Singh &  
Haimnath Singh  
C.T. Vol. 4027 fol. 481

- See Bk. 871:1
- See Bk. 985:104
- See Bk. 1179:10
- See Bk. 1247:47
- See Bk. 1249:98

At A  
N 1168725 U.T.M.  
E 0704104

Hand-held GPS Receiver  
Nap. Datum +/- 5m.

Orig BK. 871:1

*Joseph Somer*  
Director of Surveys  
13/6/12

Joseph Somer

SCALE: 1/1000

Distances are in Metres.

o Denotes Iron put unless otherwise stated  
Bearings are U.T.M. Grid based on Solar Observations  
PLAN of a parcel of land coloured pink in the Ward of Turure  
Containing nine hundred and thirty-two point four square metres  
Surveyed by me, with due authority, in March 2012  
In accordance with Regulation 25 (1) of the Land Surveyors' Regulations 1998,  
I certify that this plan is correct.

*Roop Singh* T.T.L.S.

Checked by *A.L.L.* Entered on.....

15th May 2012