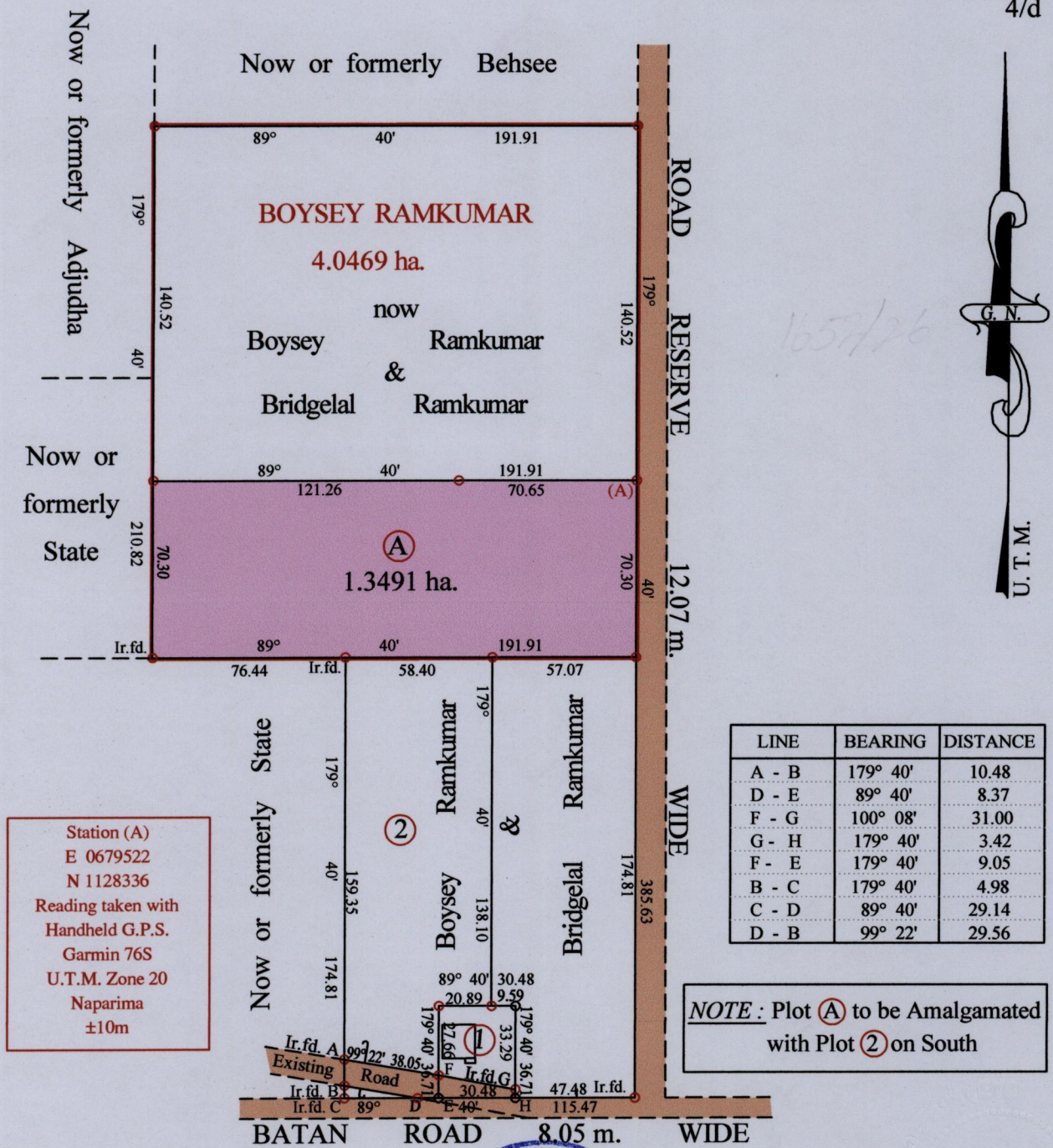


1652

26

R.P.O. Vol. 41 Fol. 291  
C.T. Vol. 3082 Fol. 367

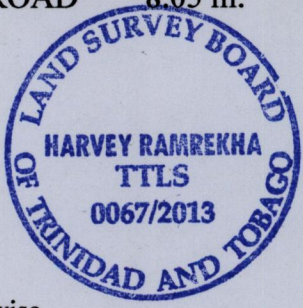
Ward of Savana Grande  
County of Victoria  
Cadastral Sheet G.9.O 64 A  
4/d



Station (A)  
E 0679522  
N 1128336  
Reading taken with  
Handheld G.P.S.  
Garmin 76S  
U.T.M. Zone 20  
Naparima  
±10m

LINE	BEARING	DISTANCE
A - B	179° 40'	10.48
D - E	89° 40'	8.37
F - G	100° 08'	31.00
G - H	179° 40'	3.42
F - E	179° 40'	9.05
B - C	179° 40'	4.98
C - D	89° 40'	29.14
D - B	99° 22'	29.56

**NOTE:** Plot (A) to be Amalgamated with Plot (2) on South



Approved .....  
Director of Surveys

- Denotes No Marks
- Denotes Iron put except stated otherwise.

Vide Bk. 323 fol. 168 → for Original  
Vide Bk. 338 fol. 174  
Vide Bk. 1110 fol. 156

SCALE : 1:2500

Note: Bearings are U.T.M. grid based on solar observations Distances are in metres  
PLAN of a Parcel of land colored pink in the Ward of Savana Grande  
Containing one point three four nine one hectares  
Surveyed by me, with due authority, in June 2011  
Certified Correct in accordance with Regulation 25 (1) of the Land Surveyors' Regulations 1998,

Checked by *[Signature]* 29/4/2013

Entered on ..... Trinidad & Tobago Land Surveyor ..... 04 ..... 2013