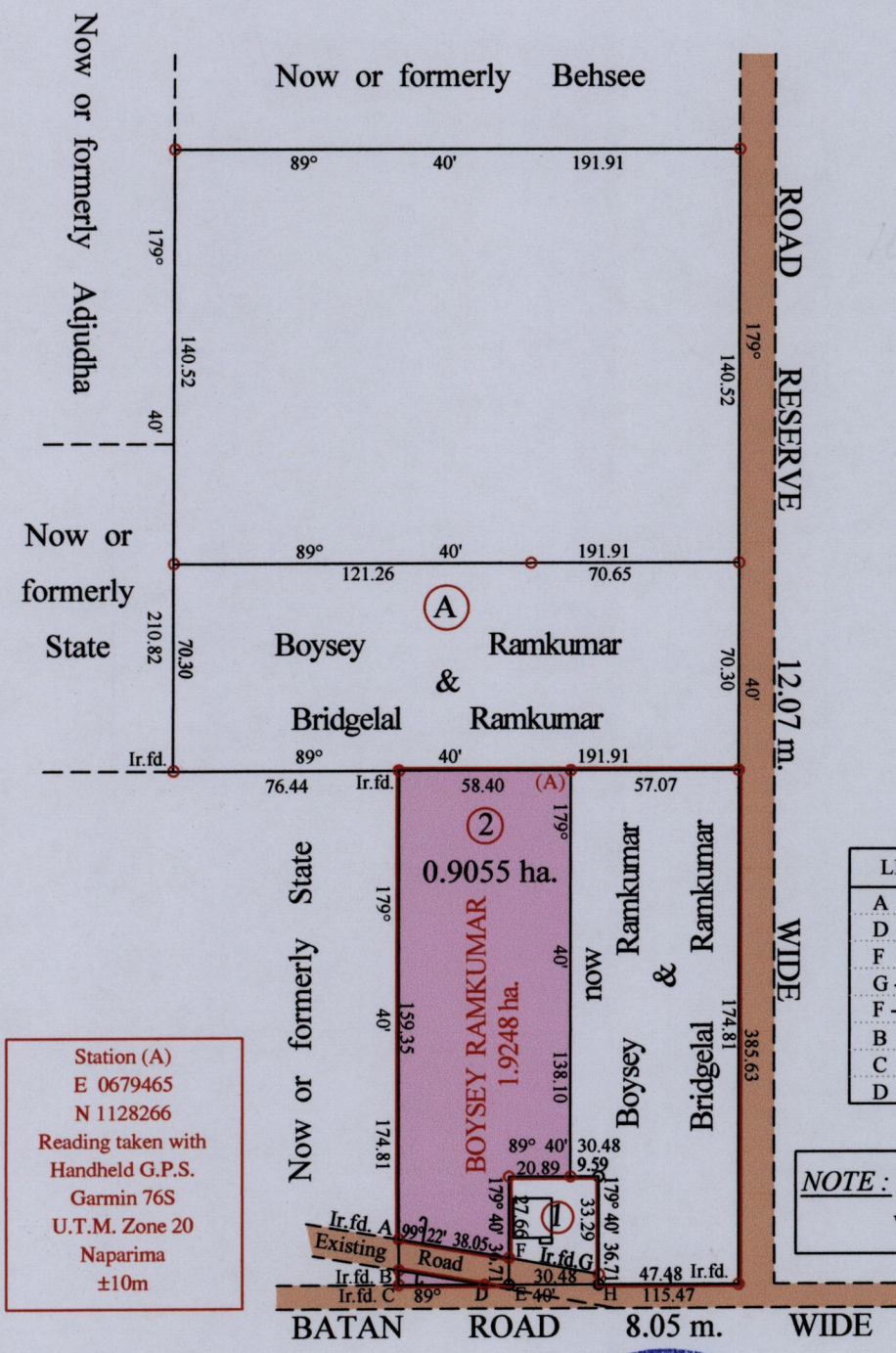


R.P.O. Vol. 128 Fol. 53
C.T. Vol. 3082 Fol. 365

Ward of Savana Grande
County of Victoria
Cadastral Sheet G.9.O 64 A
4/d



Station (A)
E 0679465
N 1128266
Reading taken with
Handheld G.P.S.
Garmin 76S
U.T.M. Zone 20
Naparima
±10m

LINE	BEARING	DISTANCE
A - B	179° 40'	10.48
D - E	89° 40'	8.37
F - G	100° 08'	31.00
G - H	179° 40'	3.42
F - E	179° 40'	9.05
B - C	179° 40'	4.98
C - D	89° 40'	29.14
D - B	99° 22'	29.56

NOTE: Plot ② to be Amalgamated with Plot ① on North



Approved *Harvey Ramrekha*
Director of Surveys
13/6/13



Vide Bk. 323 fol. 168
Vide Bk. 338 fol. 174
Vide Bk. 1110 fol. 156

- Denotes No Marks
- Denotes Iron put except stated otherwise.

SCALE : 1:2500

Note: Bearings are U.T.M. grid based on solar observations Distances are in metres
PLAN of a Parcel of land colored pink in the Ward of Savana Grande
Containing zero point nine zero five five hectares
Surveyed by me, with due authority, in June 2011
Certified Correct in accordance with Regulation 25 (1) of the Land Surveyors' Regulations 1998,

Checked by *M.M. 29/4/2013* *[Signature]*

Entered on Trinidad & Tobago Land Surveyor 2013

Orig Bk. 1157 : 132

11378935
1157:132