

1652 24

Cadastral Sheet B.19.N&O. 24B
2/d

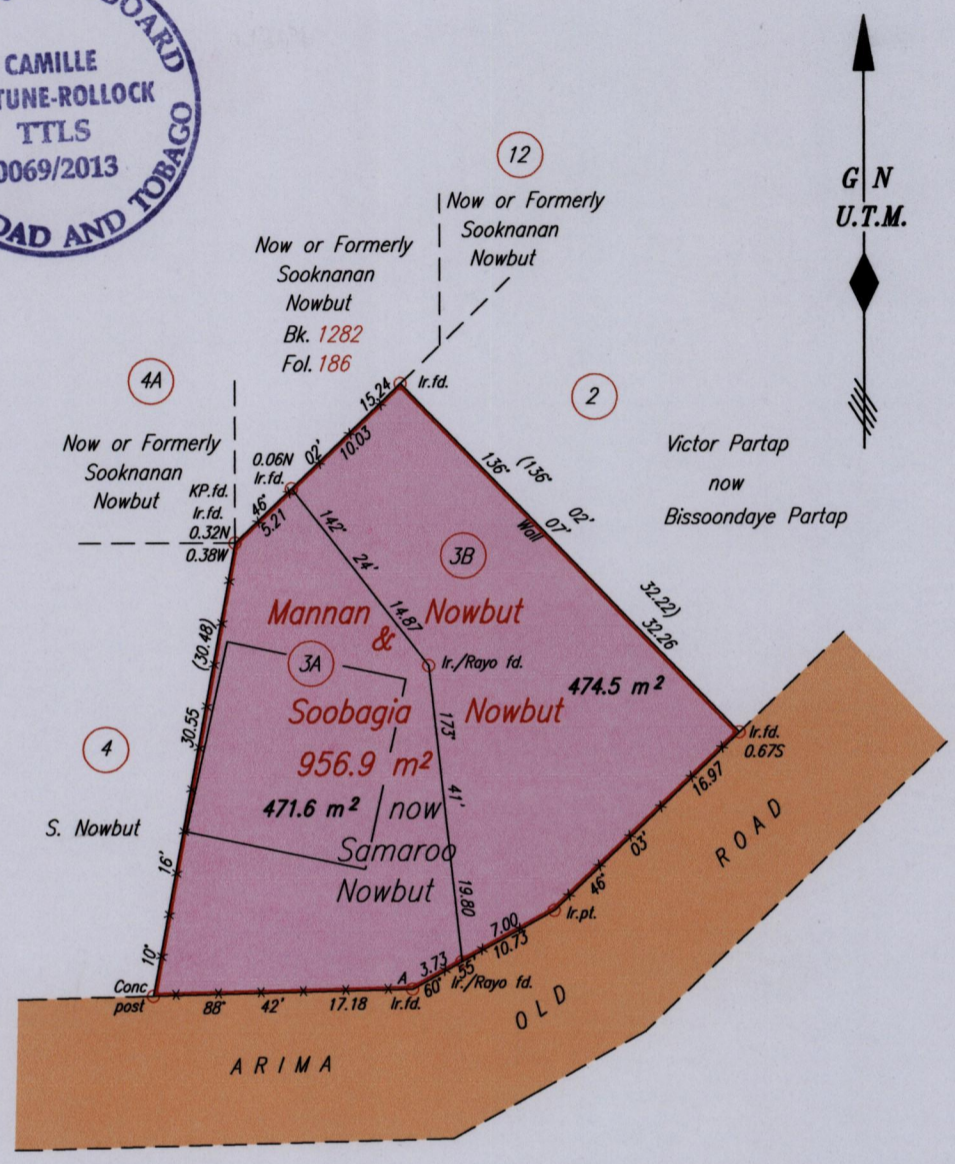
R.P.O. Vol. 518 Fol. 165
C.T. Vol. 1451 Fol. 399

Ward of Arima
County of St. George

Vide Bk. 116 Fol. 9
Bk. 935 Fol. 211



1652/24



- x - x - x - Wire Fence

Orig. Bk. 935 : 211

Coordinates of A (Ir.f.d): 0648646mE, 1176248mN
U.T.M. 20 Naparima (+/- 5.00m)
G.P.S. Direct Observation

Approved
Director of Surveys
15/8/13

SCALE 1:500
Distances are in METRES

Bearings are U.T.M. Grid based on Solar Observations
To obtain Cassini Bearings add 18 minutes

PLAN of 2 Parcels of land coloured pink in the Ward of Arima
Containing together nine hundred and forty six point one square metres
Surveyed by me, with due authority, in August 2012

Certified Correct in accordance with Regulation 25 (1) of The Land Surveyors Regulations 1998,

Checked by 9/4/2013 Camille Fortune-Rollock TTLS

Entered on Trinidad & Tobago Land Surveyor 5th April 2013
C:\LESS 2012\TRINIDAD\OLD ROAD ARIMA.CR.dwg.