

R.P.O. Vol. 10 Fol. 139

C.T.Vol. 1040 Fol. 257

Cadastral Sheet D.24.O. 54C

Ward of Savana Grande

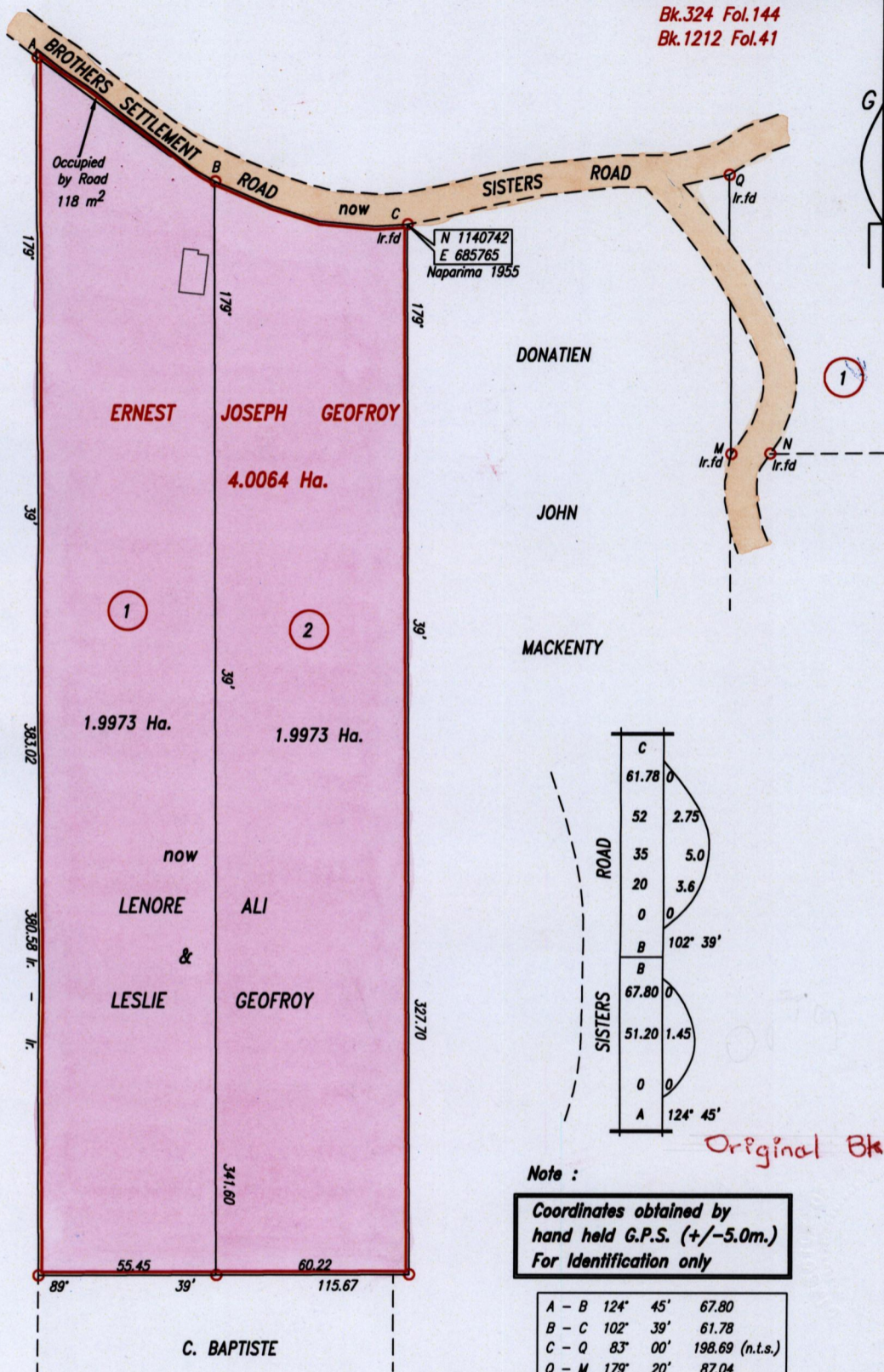
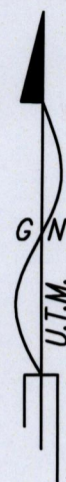
County of Victoria

Process ID # 73423

Busy Corner Village

Bk.324 Fol.144

Bk.1212 Fol.41



Note :
 Coordinates obtained by hand held G.P.S. (+/-5.0m.)
 For identification only

A - B	124° 45'	67.80
B - C	102° 39'	61.78
C - Q	83° 00'	198.69 (n.t.s.)
Q - M	179° 20'	87.04
M - N	89° 33'	11.18

Original Bk. 324 : 144

Approved *[Signature]*
 Director of Surveys 11/12/13

SCALE 1:2000
 Distances are in Metres



○ Denotes Iron put except otherwise stated
 Bearings are U.T.M. Grid based on Solar Observations
 PLAN of 2 Parcels of land coloured pink in the Ward of Savana Grande
 Containing together three point nine nine four six hectares
 Surveyed by me, with due authority, in September, 2007
 Certified Correct in accordance with Regulation 25(1) of the Land Surveyors' Regulations 1998,

Checked by *[Signature]*

Entered on *[Signature]* Trinidad & Tobago Land Surveyor 20th August 2013.
 PATH=ADA004 D:/DEO/GEOFROY DWG.