

R.P.O. Vol. 66 Fol. 457

C.T. Vol. 469 Fol. 311

PROCESS ID # 71034

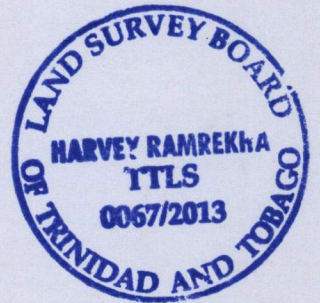
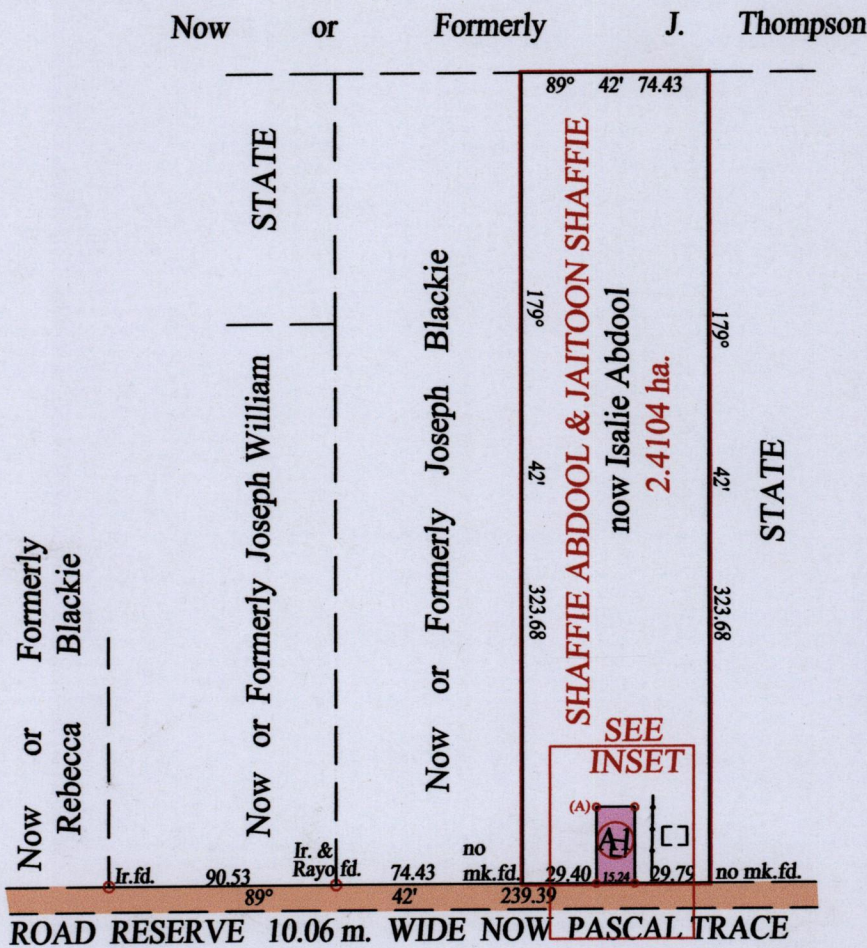
Ward of Charuma

County of Nariva

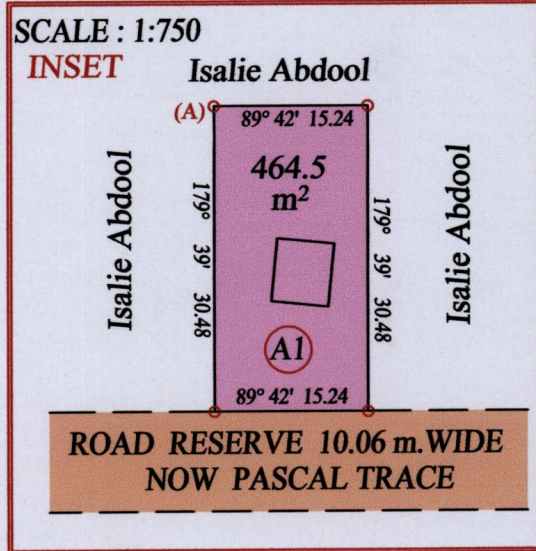
Cadastral Sheet D.24.H 54 C

#90 PASCAL TRACE

I/d



At Station (A)
E 0698738
N 1145738
Reading taken with
Handheld G.P.S.
U.T.M. Zone 20
Naparima
± 5 m.



Approved *[Signature]*
Director of Surveys 11/12/13

o Denotes Iron put except stated otherwise.

SCALE : 1:3000

Note: Bearings are U.T.M. grid based on solar observations

Distances are in metres

PLAN of a Parcel of land coloured pink in the Ward of Charuma
Containing four hundred and sixty four point five square metres
Surveyed by me, with due authority, in July 2010

Certified Correct in accordance with Regulation 25(1) of the Land Surveyors Regulations 1998

Checked by *[Signature]*

Entered on Trinidad & Tobago Land Surveyor 4.12.2013