

R.P.O. Vol. 65 Fol. 93
 C.T. Vol. 3372 Fol. 443
 PROCESS ID # 69753

REMAINING PORTION

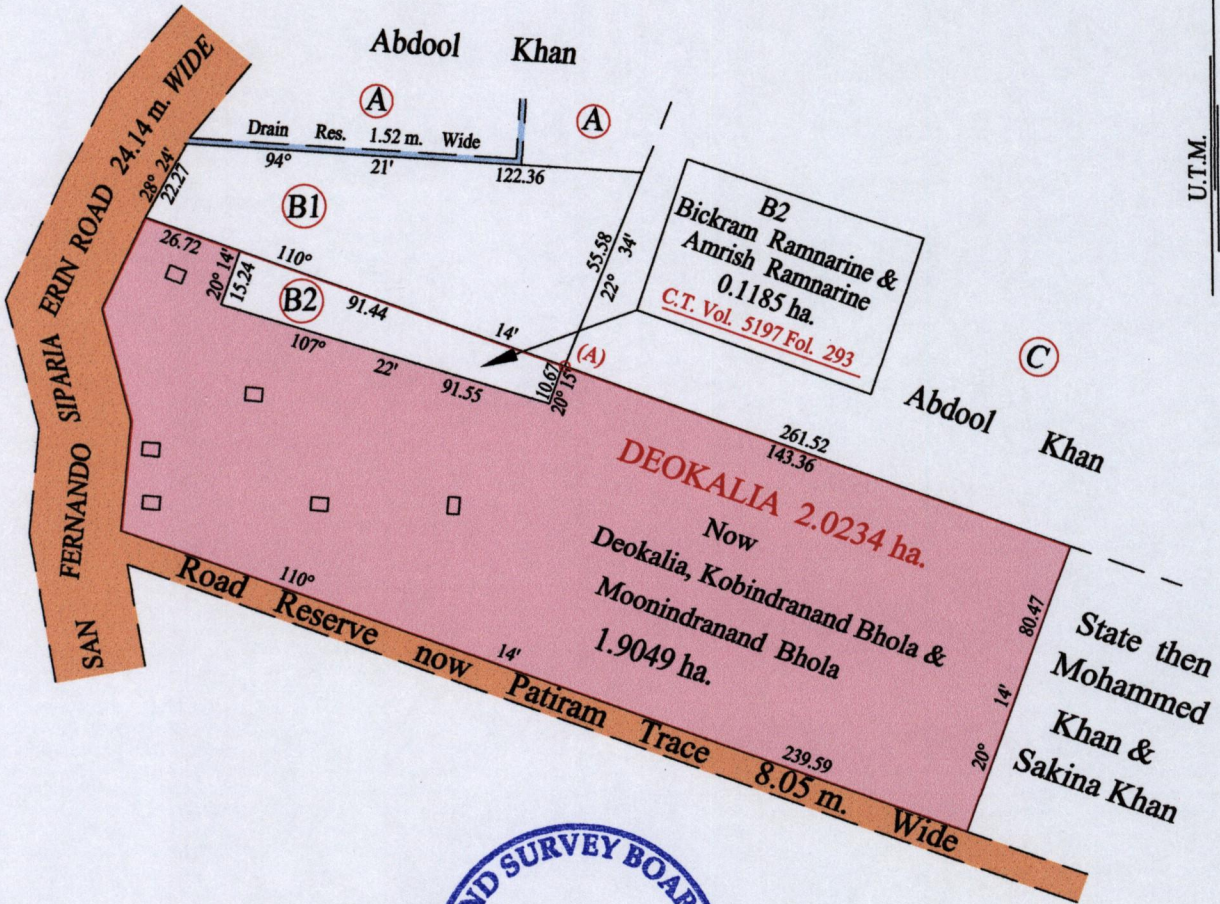
1652

Ward of Siparia
 County of St. Patrick
 Cadastral Sheet G 13 F, 63.F.
 1/c

217

G.N

U.T.M.



At Station (A)
 E: 669755 N: 1125748
 Hand Held GPS.
 Garmin 76S Naparima
 UTM Zone 20. (+/-5m)

Vide Bk. 389 fol. 121
 Vide Bk. 1103 fol. 123

Original Survey

Approved *[Signature]*
 Director of Surveys 11/12/13

SCALE : 1:2000

Note: Bearings are U.T.M. grid based on solar observations Distances are in metres
 Plan of two point zero two three four hectares, originally transferred to Deokalia, shewing a portion coloured pink and containing one point nine zero four nine hectares being the remainder after one (1) previous transfer of another portion of the land.
 In accordance with Regulation 25 (1) of the Land Surveyors' Regulations 1998, I certify that this plan represents the remaining portion.

Checked by *[Signature]*

Entered on Trinidad & Tobago Land Surveyor *[Signature]* 2013