

RPO Vol. 557 Fol. 259  
CT. Vol. 2286 Fol. 415

Ward of Siparia  
County of St. Patrick  
Cadastral Sheet G.18.I., 73B  
4/b&d

Coordinates

Ir.f.d. A :N 1117734  
E 667974

Parcel Address: Cor. Scotts Trace and  
Mendez Crown Trace,  
Siparia.

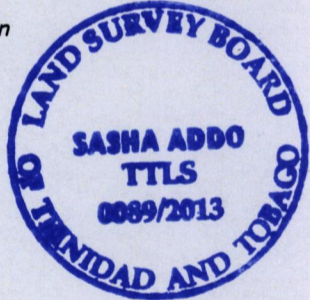
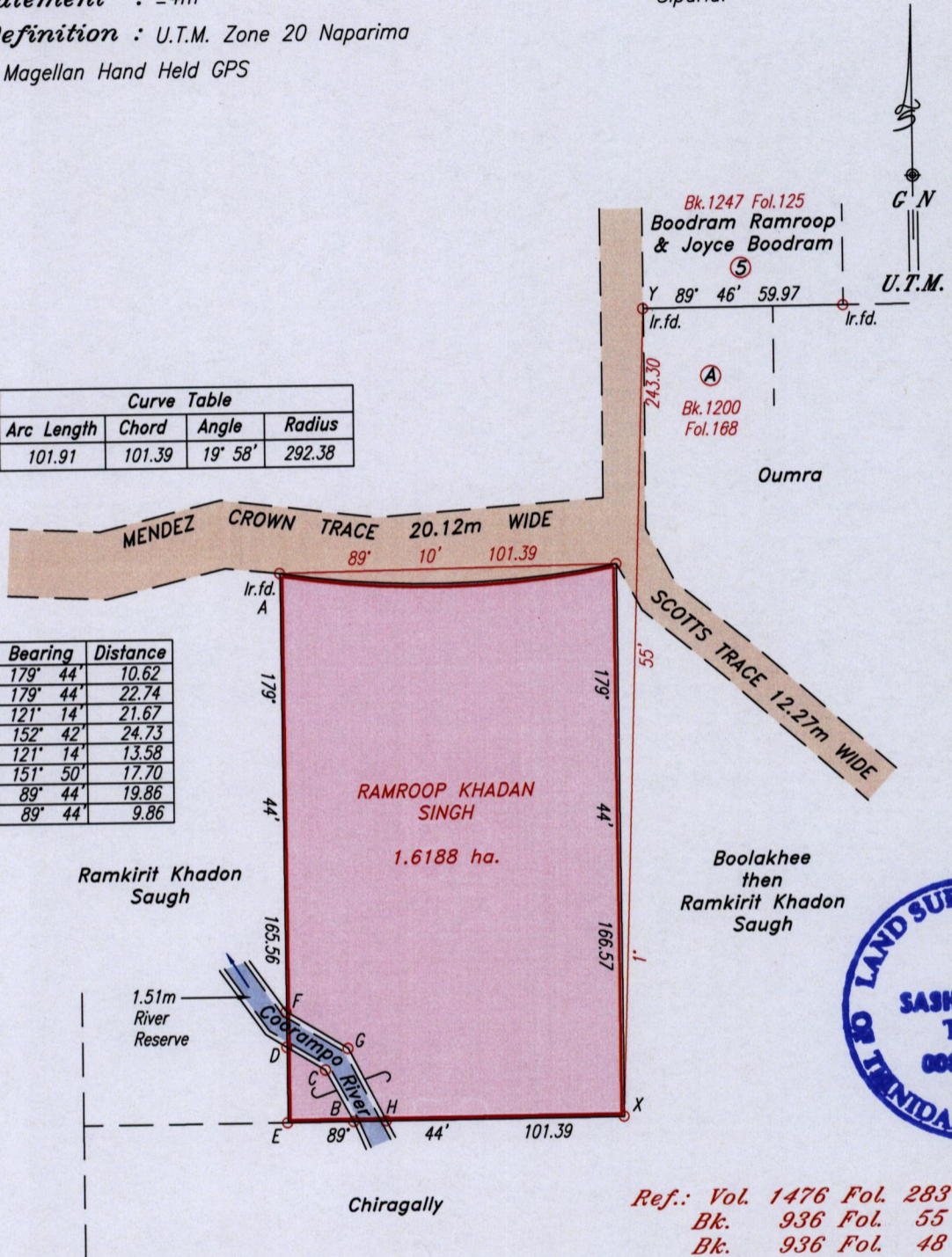
Error Statement : ±4m

Datum Definition : U.T.M. Zone 20 Naparima

Source : Magellan Hand Held GPS

Curve Table			
Arc Length	Chord	Angle	Radius
101.91	101.39	19° 58'	292.38

Line	Bearing	Distance
F-D	179° 44'	10.62
D-E	179° 44'	22.74
F-G	121° 14'	21.67
G-H	152° 42'	24.73
D-C	121° 14'	13.58
C-B	151° 50'	17.70
E-B	89° 44'	19.86
B-H	89° 44'	9.86



Ref.: Vol. 1476 Fol. 283  
Bk. 936 Fol. 55 - orig survey  
Bk. 936 Fol. 48  
Bk. 494 Fol. 167  
S.O. No.55/24 (with road  
notes) missing/destroyed

Approved.....  
Director of Surveys *[Signature]*

SCALE 1:2000

o Denotes Iron put except otherwise stated.  
Note: Bearings are U.T.M. grid based on solar observations. Distances are in metres.

Plan of a Parcel of land coloured pink in the Ward of Siparia

Containing together one point six one eight eight hectares.

Surveyed by me, with due authority, in July 2012

Certified correct in accordance with Regulation 25(1) of the Land Surveyors' Regulations 1998.

Checked by.....

Entered .....

*[Signature]*  
Trinidad & Tobago Land Surveyor .....2013