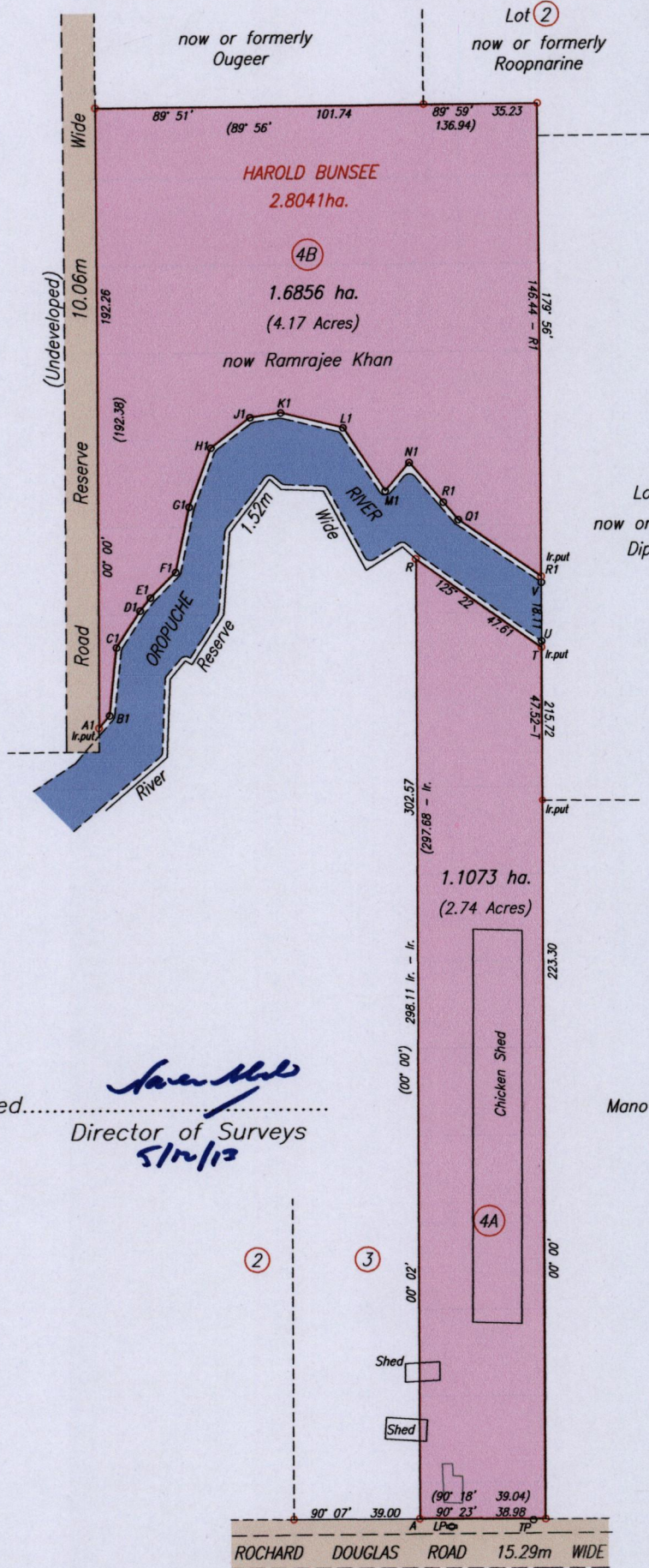


PROCESS ID # 78705  
R.P.O. Vol. 422 Fol. 151  
C.T. Vol. 4602 Fol. 551

Cadastral Sheet G.14.B. 64D  
Ward of Naparima 1/b  
County of Victoria  
Barrackpore



Lot 3 now or formerly Dipnarine



Approved.....  
Director of Surveys  
5/12/13

Mano Charles

Stations	Bearing	Distance
A1 - B1	40° 49'	5.07
B1 - C1	05° 51'	21.20
C1 - D1	32° 57'	13.57
D1 - E1	38° 33'	5.13
E1 - F1	45° 08'	11.07
F1 - G1	12° 02'	20.46
G1 - H1	20° 25'	19.58
H1 - J1	52° 16'	15.33
J1 - K1	81° 37'	9.62
K1 - L1	103° 51'	19.90
L1 - M1	146° 45'	23.70
M1 - N1	40° 08'	11.56
N1 - P1	139° 54'	16.28
P1 - Q1	139° 14'	7.08
Q1 - R1	124° 33'	31.08

Orig. Bk. 968; 69

Bk. 968 Fol. 69  
A Ir. fd. N 1126 576 Hand Held GPS +/- 5m  
E 0676 590 UTM proj. WGS84 Dat.

SCALE 1/2000  
Distances are in metres

o Denotes Iron Found unless otherwise stated

Bearings are Cassini Grid based on Solar Observations

PLAN of 2 Parcels of land coloured pink in the Ward of Naparima

Containing together two point seven nine two nine hectares

Surveyed by me with due authority in November 2013

Certified Correct in accordance with Regulation 25 (1) of the Land Surveyors' Regulations 1998

Checked by.....

*Winston Ramcharan*

Entered on.....

Trinidad & Tobago Land Surveyor *28th November* 2013