

PROCESS ID # 78070

R.P.O. Vol. 227 Fol. 525

Ward of Savana Grande

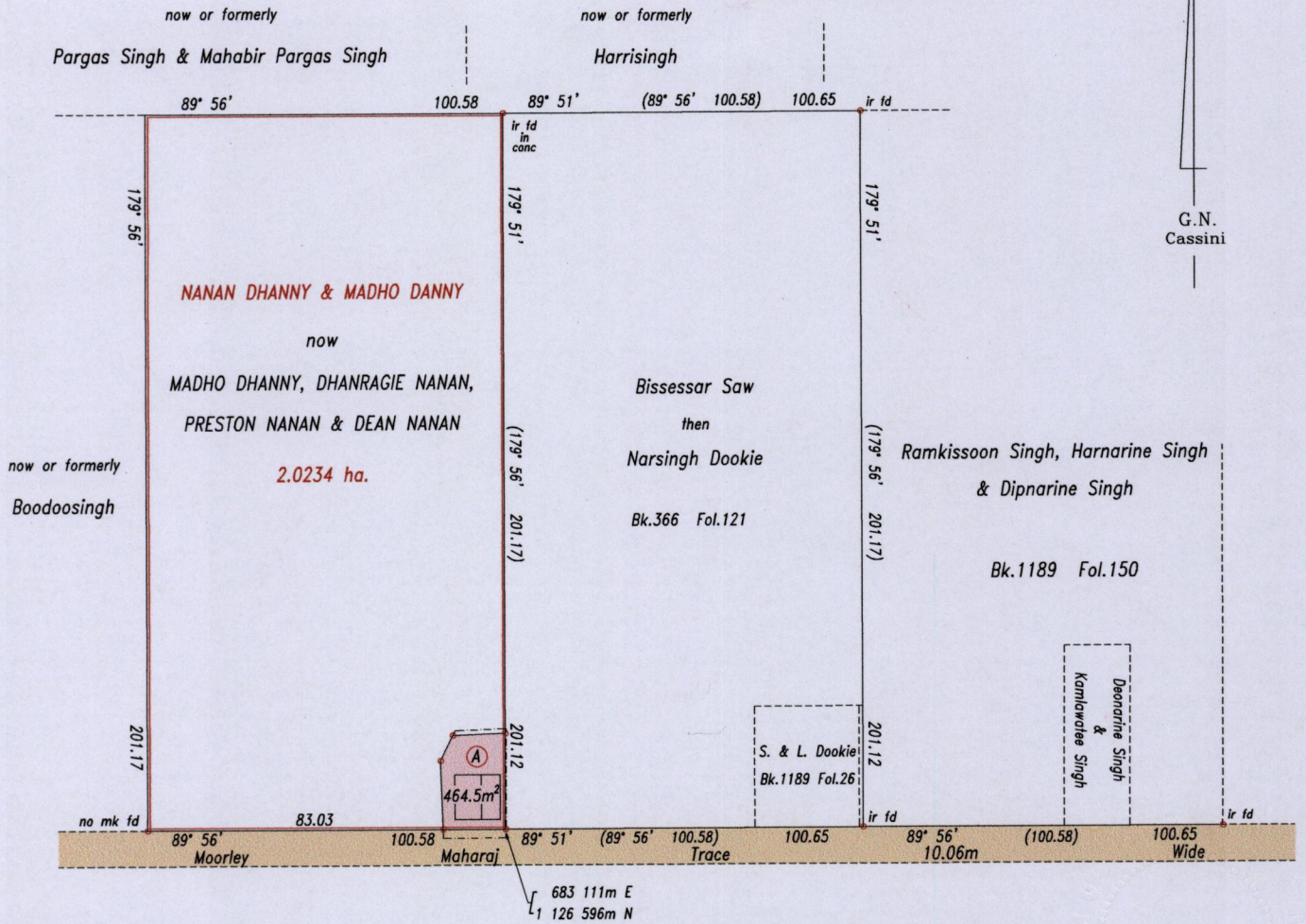
C.T. Vol. 1777 Fol. 263

County of Victoria

U.P.I.N. No.:

Cadastral Sheet G.15.B. 64E
2/a

Reference: Bk.366 Fol.134

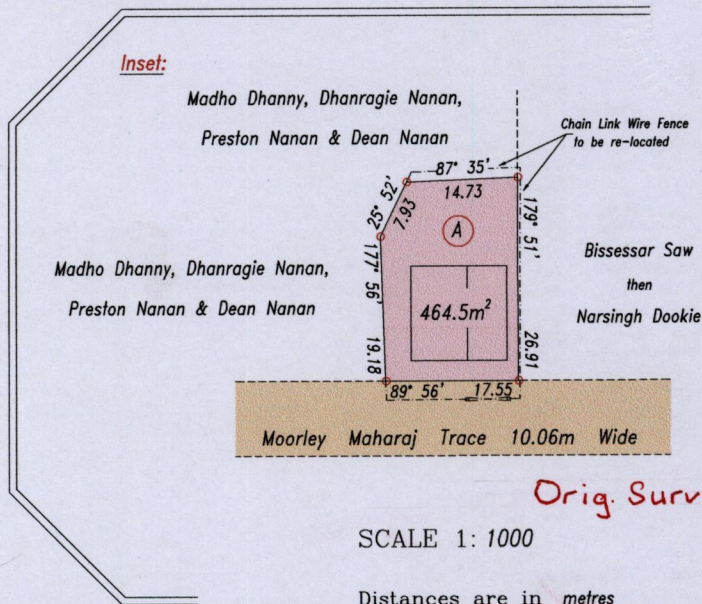


SCALE 1: 2000

Distances are in metres

o Denotes iron put except otherwise stated

Coordinate Information
Source: Lands & Surveys Division
Ward Sheet 64E (1:10,000 Series)
Coordinates derived from Scaling.
Error Statement: +/- 10m
Datum: Naparima, UTM (Zone 20)



Orig. Survey Bk. 366 Fol. 134

SCALE 1: 1000

Distances are in metres

o Denotes iron put except otherwise stated

Bk 366 : 134

Approved

Director of Surveys 5/12/13

Bearings are Cassini Grid based on Solar Observations

PLAN of a parcel of land coloured pink in the Ward of Savana Grande

Containing four hundred and sixty four point five square metres

Surveyed by me, with due authority, in March & July 2006

Certified Correct in accordance with Regulation 25(1) of the Land Surveyors' Regulations 1998.

Checked by

Entered

L.A. Roopchand

Trinidad & Tobago Land Surveyor 16/9/2013

