

R.P.O. Vol. 96 Fol. 29

C.T. Vol. 1247 Fol. 21

PROCESS ID # 50037

REMAINING PORTION

Ward of Siparia

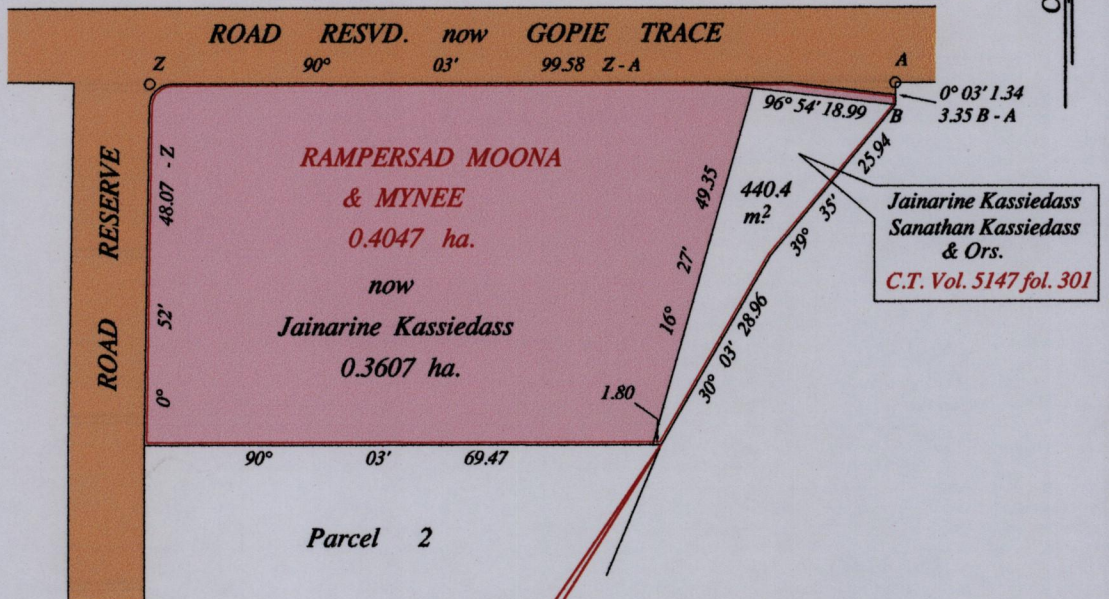
County of St. Patrick

Cadastral Sheet G. 11. H. 63.E.
2/b

1652

21

1652/21



N: 1125974
 E: 668096
 Hand Held GPS.
 Naparima Datum (+/-5m)
 UTM Zone 20.



Orig Bk. 1012 fol 49.

Vide Bk. 903 fol. 141

Approved *[Signature]*
 Director of Surveys
 12/6/12

SCALE : 1:1000

Note: Bearings are cassini grid based on solar observations Distances are in metres
 This is a true copy of a diagram of zero point four zero four seven hectare, originally transferred to Rampersad Moona & Mynee, shewing a portion coloured pink and containing zero point three six zero seven hectares being the remainder after one (1) previous transfer of another portion of the land.
 In accordance with Regulation 25 (1) of the Land Surveyors' Regulations 1998, I certify that this plan is correct.

Checked by *[Signature]* 14/12
 Winston Ramcharan

Entered on Trinidad & Tobago Land Surveyor .i.g. 14 March 2012