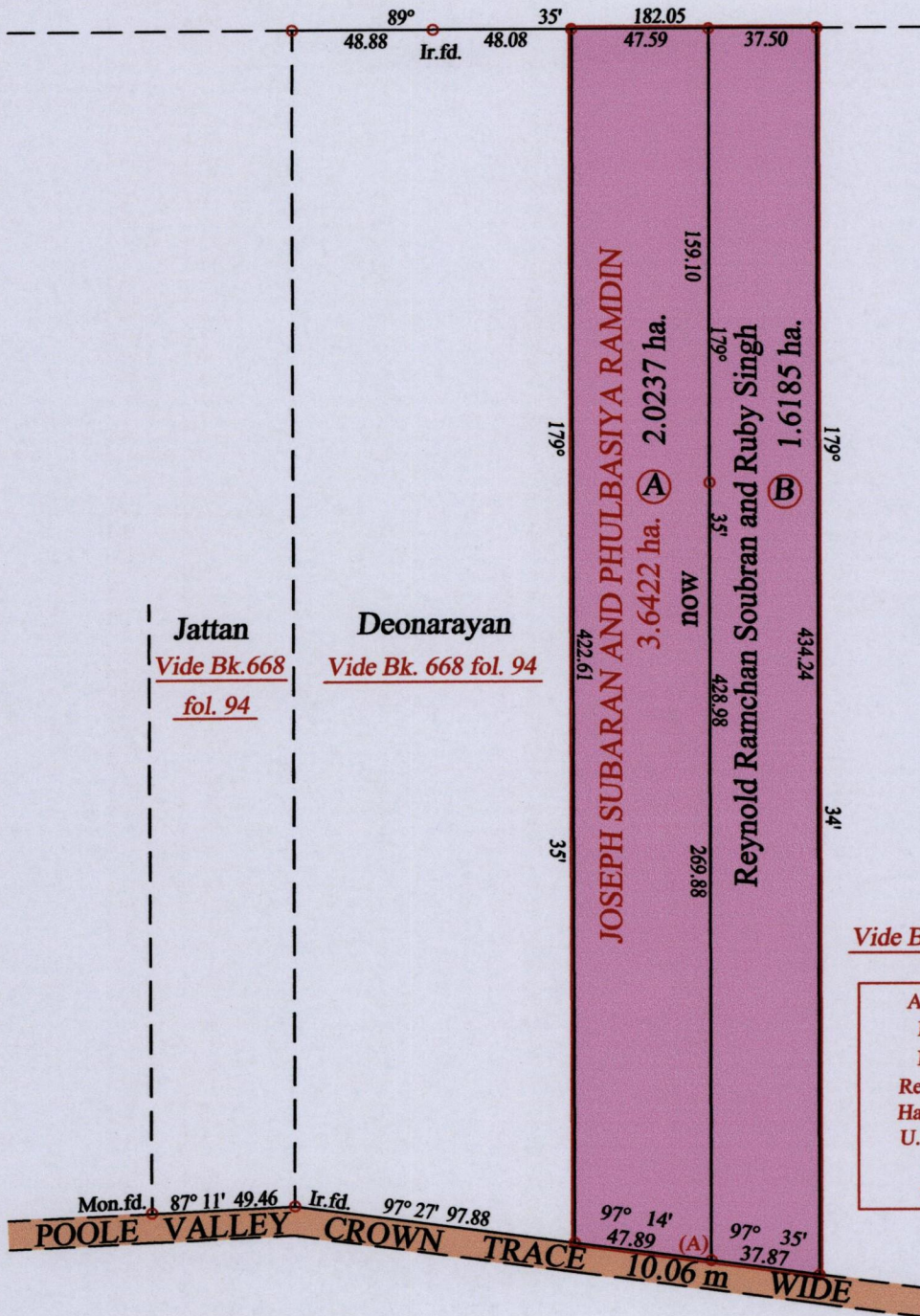


R.P.O. Vol. 737 Fol. 167
C.T. Vol. Fol.
PROCESS ID# 70745

Ward of Charuma
County of Nariva
Cadastral Sheet H.1.C 55.D.
2/d

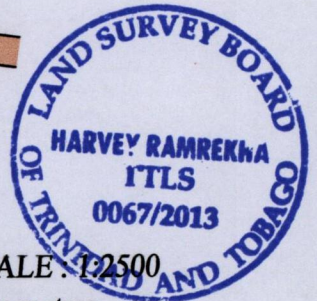
State



State

Vide Bk. 690 fol. 134 Original Survey

At Station (A)
 E 0696445
 N 1136678
 Reading taken with
 Handheld G.P.S.
 U.T.M. Zone 20
 Naparima
 ± 10 m.



Approved *[Signature]*
Director of Surveys 4/12/13

SCALE: 1:2500

Note: Bearings are U.T.M. grid based on solar observations Distances are in metres

PLAN of 2 Parcels of land coloured pink in the Ward of Charuma
Containing together three point six four two two hectares
Surveyed by me, with due authority, in January 2009

Certified Correct in accordance with Regulation 25(1) of the Land Surveyors Regulations 1998

Checked by *[Signature]*

Entered on Trinidad & Tobago Land Surveyor 20 : 11 : 2013