

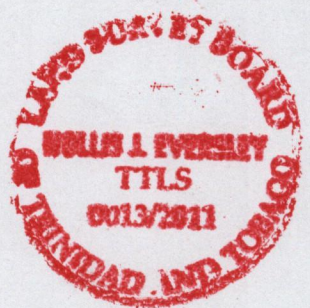
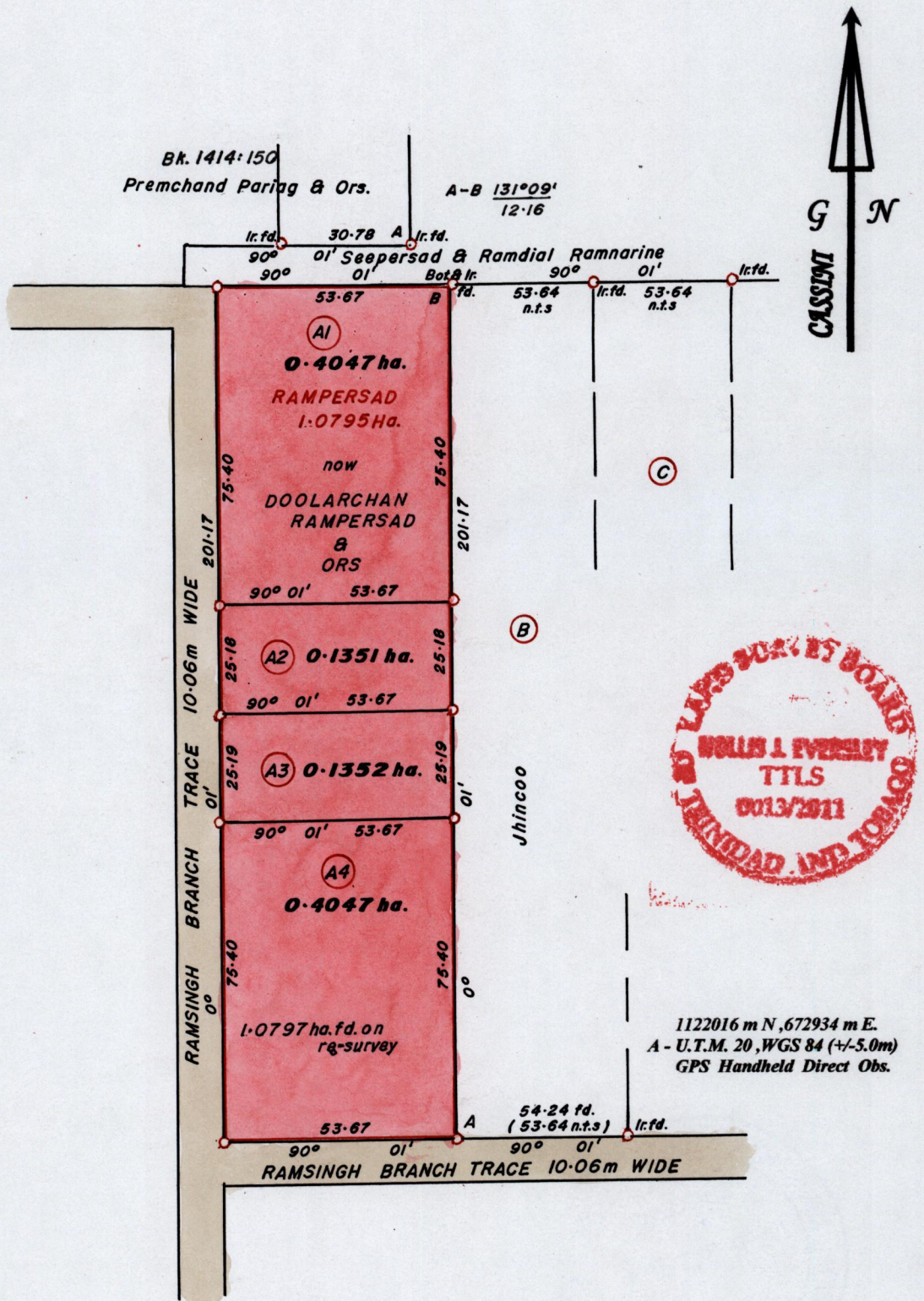
R.P.O Vol. 273 Fol. 77
 C.T. Vol. 1780 Fol. 479

Process ID # 71800

1652

Ward of Siparia.
 County of St. Patrick.
 Cadastral Sheet G.13.P. 63F
 4/d.

2000



1122016 m N, 672934 m E.
 A - U.T.M. 20, WGS 84 (+/-5.0m)
 GPS Handheld Direct Obs.

Approved.....
 Director of Surveys. 2/12/13

Orig Bk. 1002 : 20.
 SCALE 1 : 1500.
 Distances are in METRES
 o Denotes Iron Put except otherwise stated
 Bearings are Cassini Grid based on Solar Observations.

PLAN of 4 Parcels of land coloured in PINK in the Ward of Siparia.
Containing together one point zero seven nine seven hectares.
Surveyed by me, with due authority, in February 2010.
In accordance with Reg. 25(1) of the Land Surveyors' Regulations 1998,
I certify that this plan is correct.

Checked by *SR* 2013.11.28.....
 Entered

[Signature]
 Trinidad and Tobago Land Surveyor..... 28th Dec 2011: 2011: