

R.P.O. Vol. 212 Fol. 145

C.T. Vol. Fol.

PROCESS ID # 54429

Ward of Siparia

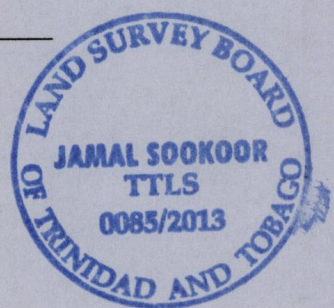
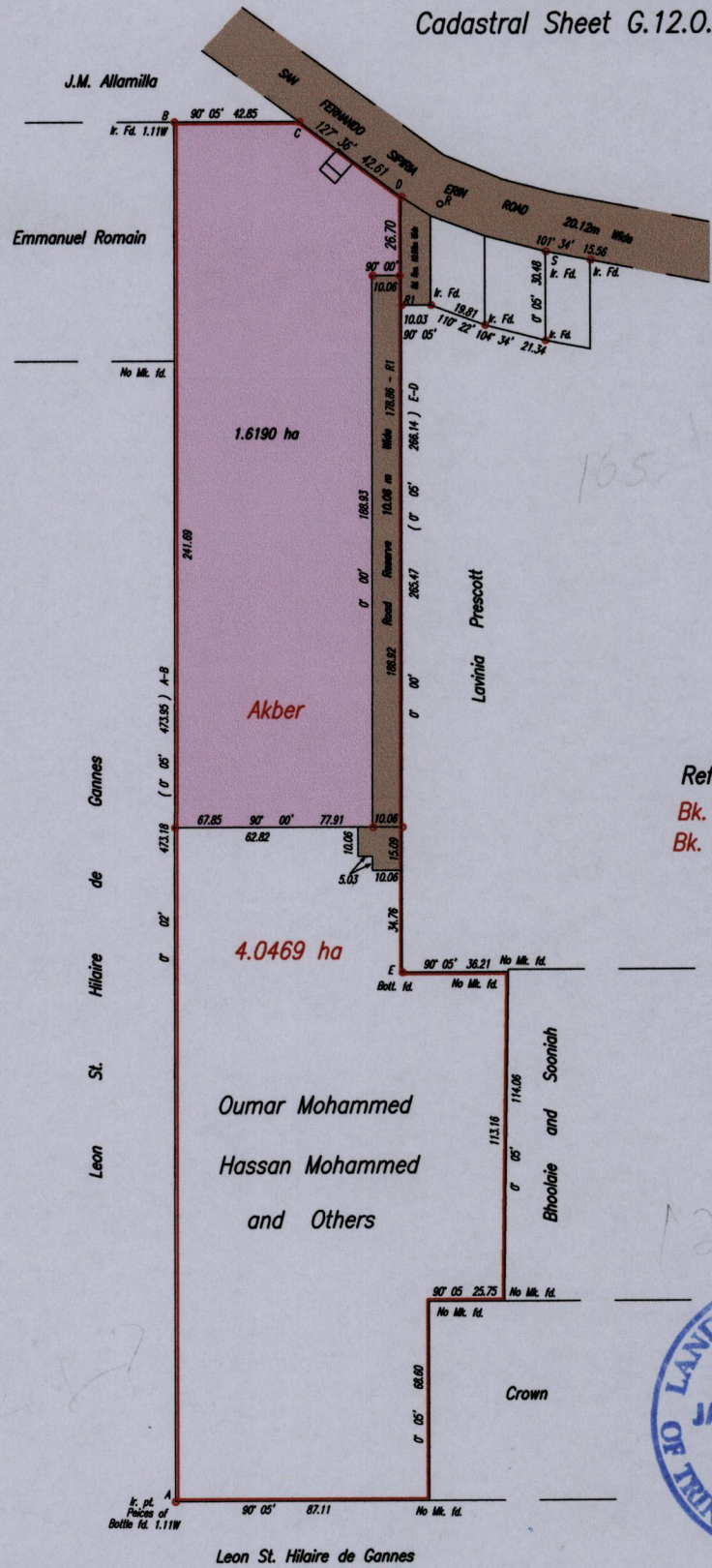
County of St. Patrick

Cadastral Sheet G.12.0. 73B
1/b

Point : B
E 664770m ; N 1122050m
UTM WGS84 ±5m
Observation from handheld GPS

D-R 100° 16' 13.44
R-S 114° 08' 39.51

References
Bk. 484 : 128
Bk. 1010 : 37



Approved : *[Signature]*
Director of Surveys
13/6/13

Orig Bk. 484 : 128

SCALE 1:2500

o denotes iron put except otherwise stated.
Bearings are Cassini Grid based on solar observations.

Distances are in Metres

Plan of a Parcel of land coloured pink in the Ward of Siparia
Containing one point six one nine zero hectares.

Surveyed by me, with due authority, in April 2010.

Certified Correct in accordance with Regulation 25(1) of the Land Surveyors' Regulations 1998.

Checked by *[Signature]* 11/5/2013

[Signature]

Entered

Trinidad & Tobago Land Surveyor 3rd May . . . 2013