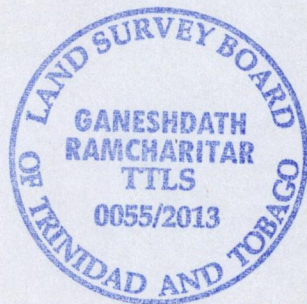
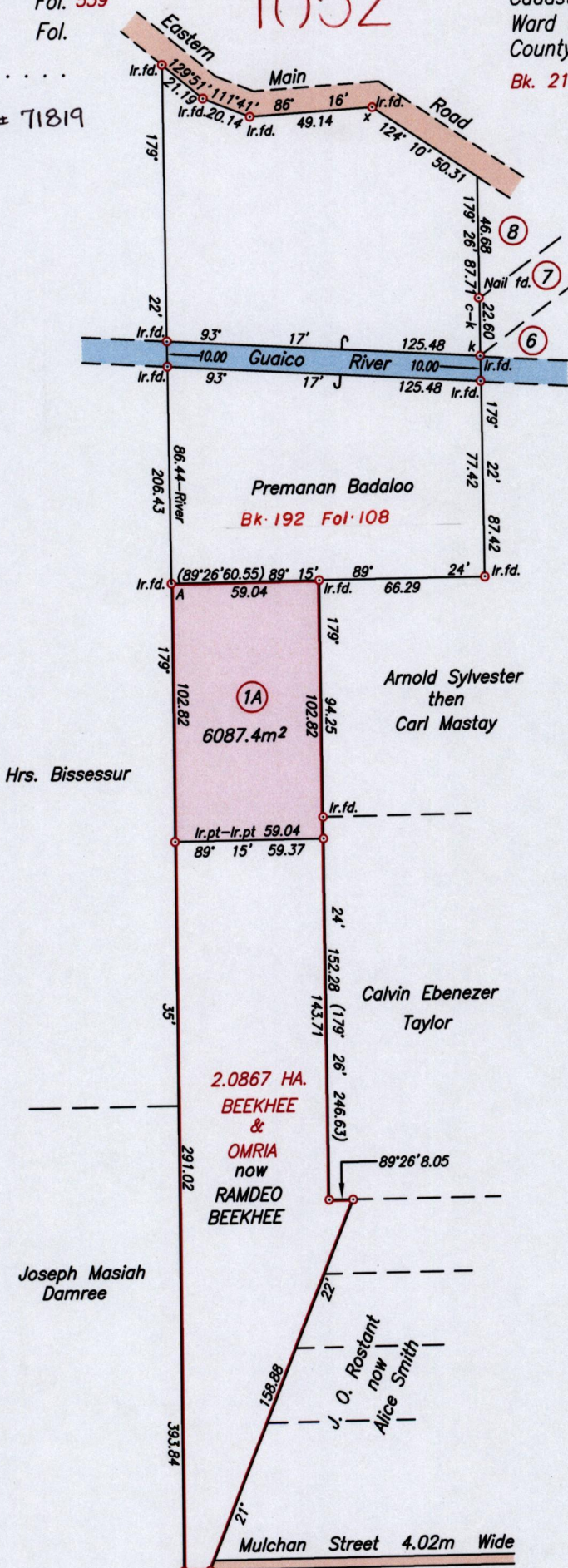


PROCESS ID # 71819

1652

1988



Orig Survey Bk 219:134

Approved *[Signature]*
 Director of Surveys 22/11/07

NOTE: PLOT (1A) TO BE CONSOLIDATED TO PREMANAN BADALOO TO FORM ONE PARCEL

Point A
 Co-ordinates obtained by Hand Held G.P.S. (Nap. Datum)
 Accuracy ± 6m
 E 701989m
 N 1170787m

SCALE 1/2500
 Distances are in metres

Note: To obtain Cassini bearing + 18 minutes
 • Denotes Iron put except otherwise stated
 Bearings are U.T.M. Grid based on Solar Observations
 Plan of a Parcel of land coloured pink in the Ward of Tamana
 Containing six thousand and eighty seven point four square metres
 Surveyed by me, with due authority, on 8th April 2005
 Certified Correct in accordance with Regulation 25 (1) of the Land Surveyors' Regulations 1998

Entered on
 Checked by Trinidad & Tobago Land Surveyor 22/11 2013