

PROCESS ID # 66853

RPO Vol. 199 Fol. 401

CT. Vol. 456 Fol. 171

Ward of Siparia

County of St. Patrick

Cadastral Sheet G.12.P. 63E  
4/c

Coordinates

Ir.f.d. A : N 1122826

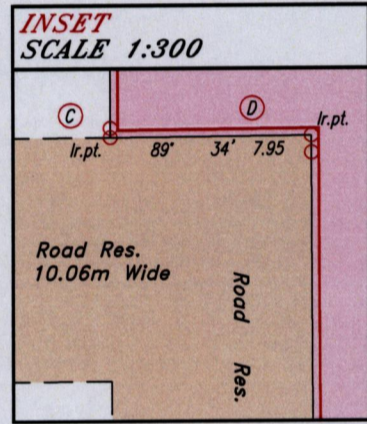
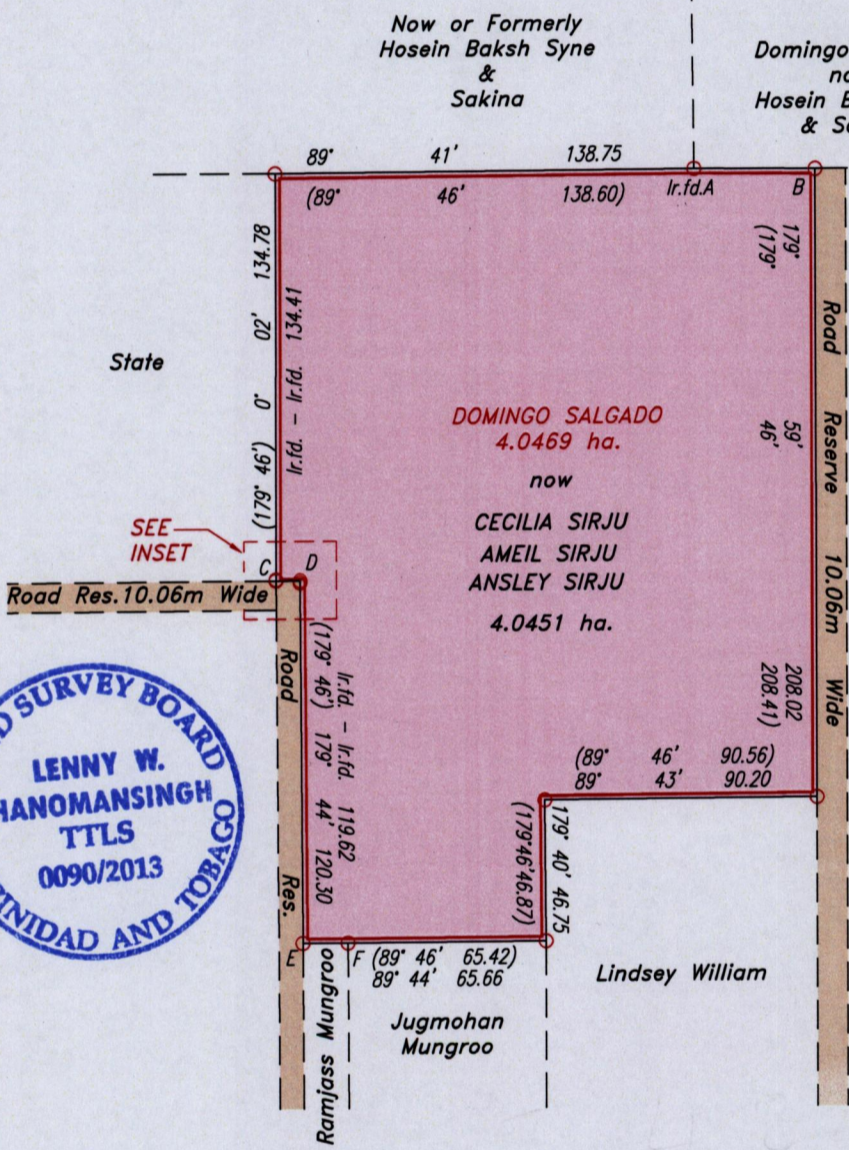
E 666283

Error Statement : ±4m

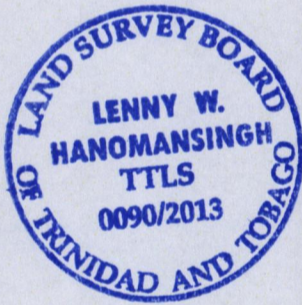
Datum Definition : U.T.M. Zone 20 Naparima

Source : Magellan Hand Held GPS

Parcel Address: Syne Trace,  
Syne Village, Siparia



Line	Bearing	Dist.
Ir.f.d.A-B	(89° 46')	40.34
	90° 20'	40.11
C-D	(89° 46')	7.84
	89° 34'	7.95
E-F	(89° 46')	15.05
	89° 55'	14.89
X-Y	(120° 13')	10.82
	120° 22'	12.86



Original Survey

Ref.: Bk. 482 Fol. 392  
Bk. 1247 Fol. 72

Approved.....  
Director of Surveys 26/1/13

SCALE 1:2500

○ Denotes Iron found except otherwise stated.

Note: Bearings are U.T.M. grid based on solar observations. Distances are in metres.

Plan of Parcel of land coloured pink in the Ward of Siparia

Containing four point zero four five one hectares

Surveyed by me, with due authority, in March 2013

Certified correct in accordance with Regulation 25 (1) of the Land Surveyors Regulations 1998.

Checked by... mm 23/9/2013

*Lenny W. Hanomansingh*  
Trinidad & Tobago Land Surveyor 29/01/2013

Entered .....