

1652

182

R.P.O. Vol. 151 Fol. 417

C.T. Vol. 986 Fol. 341

Ref.: Bk. 398 Fol. 343

Ref.: Bk. 399 Fol. 4

Ref: Plan A.N.129

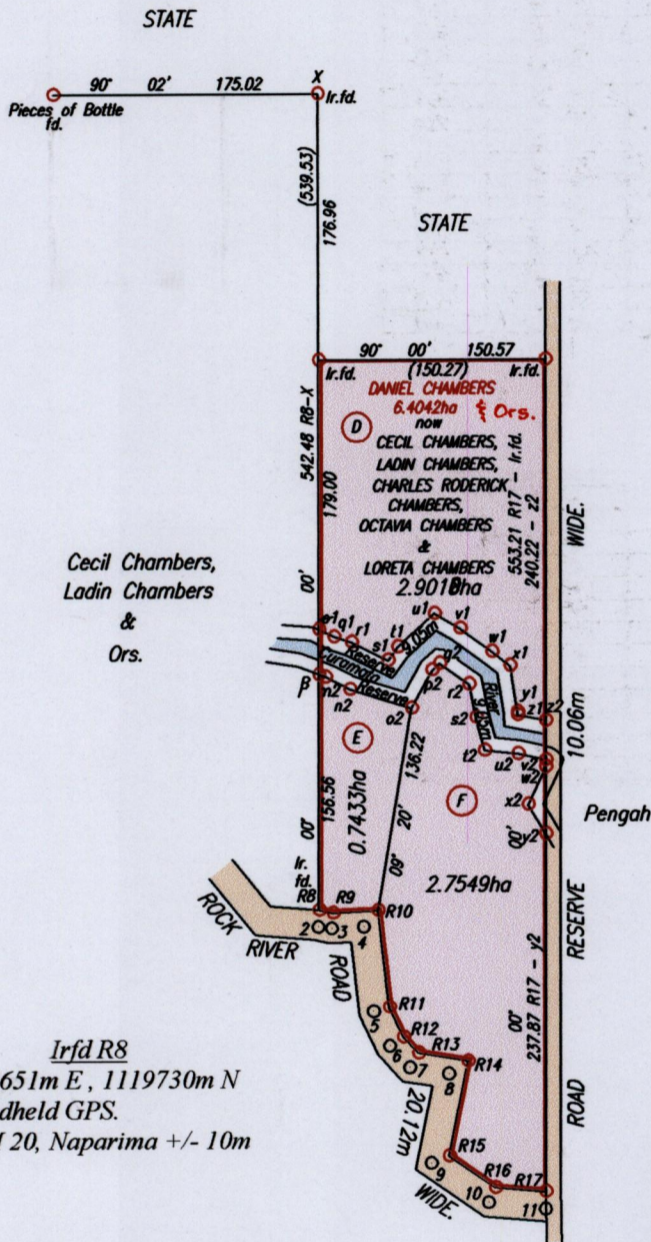
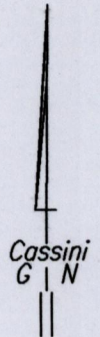
Cadastral Sheet G.19.A. 74A
1/c

Ward of Siparia

County of St.Patrick.

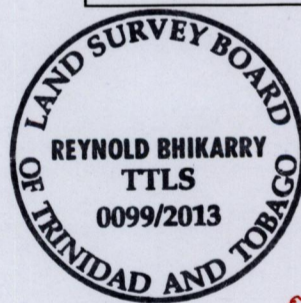
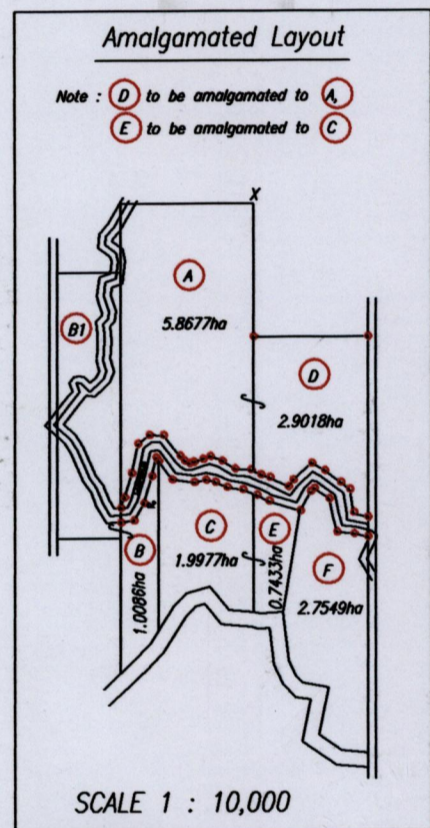
Rock River Road,

Penal.



Cecil Chambers,
Ladin Chambers
&
Ors.

Irfd R8
674651m E, 1119730m N
Handheld GPS.
UTM 20, Naparima +/- 10m



Approved

[Signature]
Director of Surveys *[Signature]*

Orig Bk. 398 fol. 343

SCALE 1 : 5000
Distances are in metres

o Denotes Iron put except otherwise stated

Bearings are Cassini Grid based on Solar Observations

PLAN of 3 Parcels of land coloured pink in the Ward of Siparia

Containing together six point four zero zero zero hectares

Surveyed by me, with due authority, in July, 2011

Certified Correct in accordance with Regulation 25 (1) of the Land Surveyors' Regulations 1998,

Checked by *[Signature]* 28/10/2013

Entered on Trinidad & Tobago Land Surveyor. *[Signature]* 30th May 2013.

LEGEND		
LINE	BEARING	DISTANCE
o1 q1	112° 07'	15.12
q1 r1	107° 10'	12.20
r1 s1	116° 32'	27.11
s1 t1	35° 52'	11.02
t1 u1	47° 41'	32.81
u1 v1	120° 19'	19.72
v1 w1	126° 14'	26.34
w1 x1	128° 02'	15.15
x1 y1	170° 55'	31.02
y1 z1	178° 14'	2.23
z1 z2	101° 55'	15.09
β m2	110° 59'	4.87
m2 n2	117° 08'	18.07
n2 o2	107° 08'	42.75
o2 p2	28° 26'	28.86
p2 q2	49° 29'	6.56
q2 r2	125° 33'	24.00
r2 s2	168° 10'	22.46
s2 t2	165° 53'	22.82
t2 u2	95° 50'	22.35
u2 v2	102° 31'	18.88
w2 v2	00° 00'	4.57
x2 w2	25° 12'	27.57
x2 y2	148° 57'	22.76
y2 w2	00° 00'	44.44
β o1	00° 00'	29.96
v2 z2	00° 00'	26.11

S.O.No. 487/05

LEGEND		
LINE	BEARING	DISTANCE
2 3	96° 33'	8.95
3 4	87° 00'	21.32
4 5	173° 25'	56.73
5 6	154° 57'	25.35
6 7	137° 09'	19.61
7 8	99° 27'	26.35
8 9	191° 06'	60.45
9 10	124° 43'	46.27
10 11	96° 50'	37.62
Z R8	00° 00'	11.06
11 R17	00° 00'	11.45



1652/182