

1652

1830

REMAINING PORTION

R.P.O. Vol. 140 Fol. 333

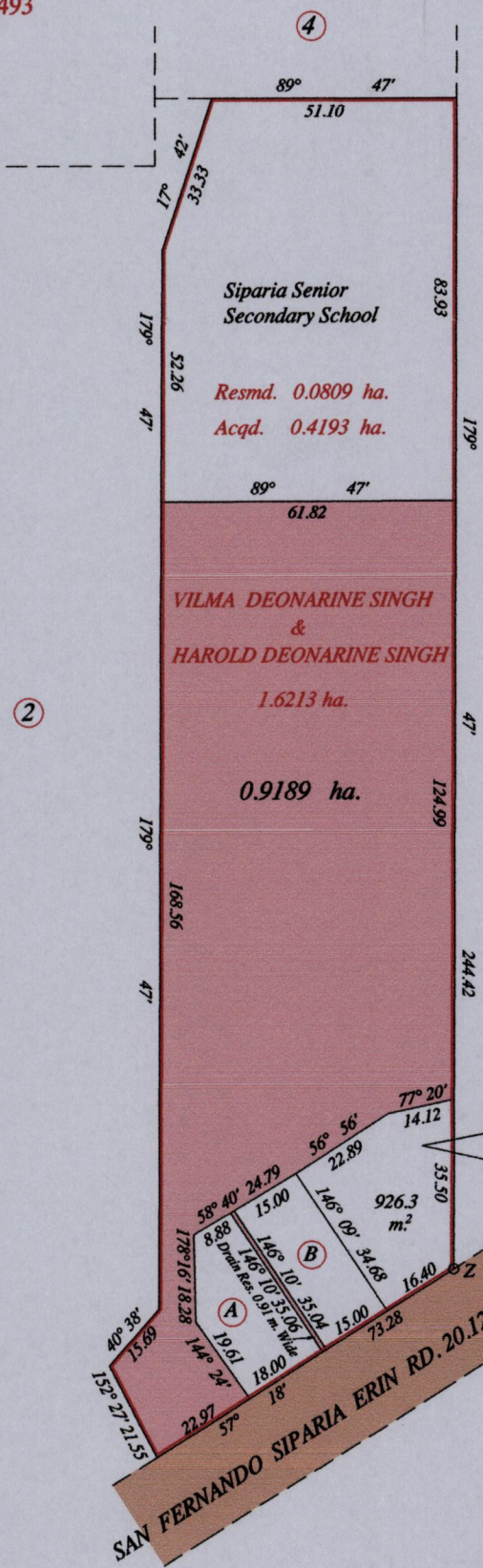
Ward of Siparia

C.T. Vol. 3201 Fol. 201

County of St. Patrick

Bk. 1219 Fol. 166
Bk. 1145 Fol. 493

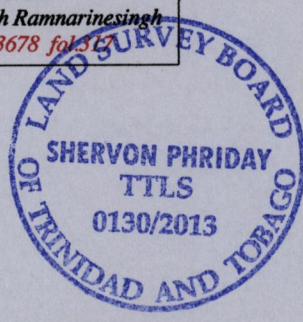
Cadastral Sheet (G.17.A) 73A.
2/a



STATE

Z = N. 1121138 E. 661617
U.T.M. Zone 20, W.G.S. 84 (+/- 2.00 m.)
Hand Held G.P.S.

Sylvia Babooram
Kissoondath Ramnarinesingh
C.T. Vol. 3678 fol. 317



Parcel A Harold Deonarine Singh 572.8 m²
C.T. Vol. 4672 fol. 343
Parcel B Narish Deonarinesingh 522.6 m²
C.T. Vol. 4672 fol. 351

Orig Survey Bk. 999 : 152

Approved
Director of Surveys 25/11/13

SCALE 1 : 1500

Plan of one point six two one three hectares, originally transferred to Vilma Deonarine Singh and Harold Deonarine Singh. showing a portion coloured pink and containing zero point nine one eight nine hectare being the remainder after three (3) previous transfers, one resumption and one acquisition of other portions of the land
In accordance with Regulation 25 (1) of the Land Surveyors Regulation 1998.
I certify that this plan represents the remaining portion.

Checked by M.M. 28/10/2013 Shervon Phriday

Entered on Trinidad & Tobago Land Surveyor 30th September 2013