

R.P.O. Vol. 71
C.T. Vol. 466

Vide : Plan K.D. 63
Bk.171 Fol.81

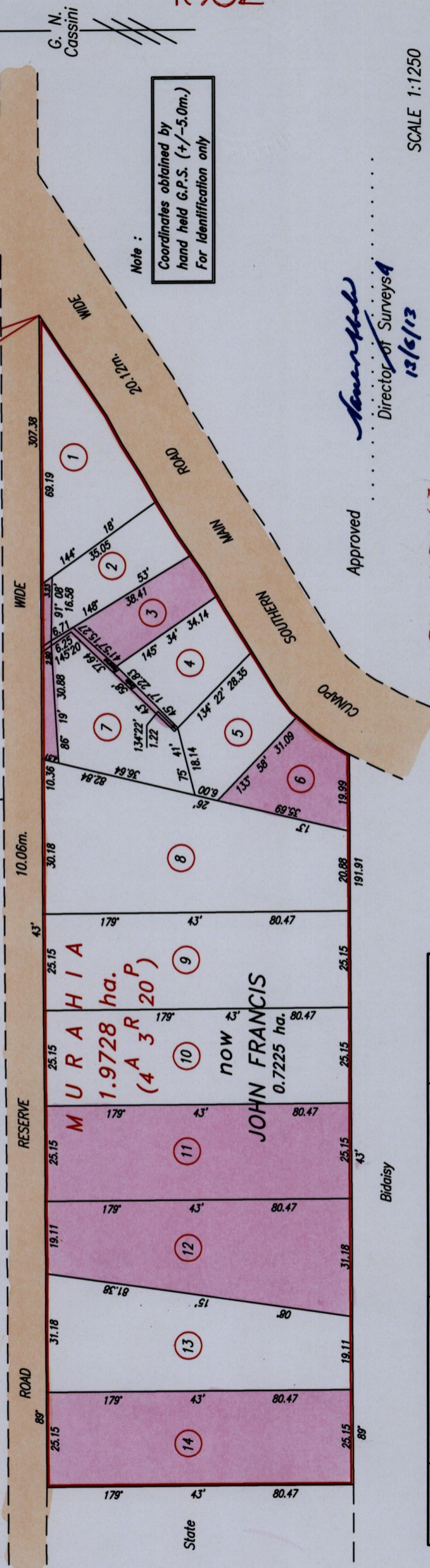
Process Id # G1919

Fol. 355
Fol. 287

REMAINING PORTION

Cadastral Sheet E.2.I. 25F
3/d
Ward of Tureure
County of St. Andrew

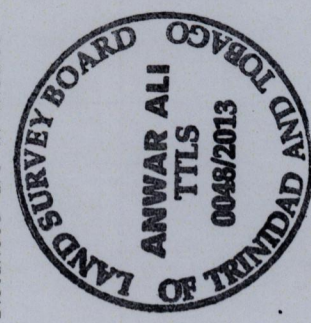
(U.I.M. Naparima)
N 1167090
E 704232



Note :
Coordinates obtained by
hand held G.P.S. (+/-5.0m.)
For identification only

Approved
Lawrence
Director of Surveys
13/6/13

SCALE 1:1250
Distances are in metres



Orig Plan K.D. 63

Plan of one point nine seven two eight hectares originally granted to MURAHIA, showing a portion coloured pink and containing zero point seven two five hectares being the remainder after nine (9) previous transfers of other portions of the land. In accordance with Regulation 25 (1) of the Land Surveyors Regulations 1998, I certify that this plan represents the remaining portion.

Checked by *ANWAR ALI* 16/5/2013

Entered on Trinidad & Tobago Land Surveyor 21st January 2013.

PATH = AD4002 E:\DRAWINGS\VERONICA FRANCIS REMAINING PORTION.DWG

LOT NOS.	AREAS S.F./m ²	NAME	C.T.VOL
1	11,221 S.F./1,042.4 m ²	Martin Harry	Vol.3023 Fol.405
2	6,723 S.F./ 624.6 m ²	Albertina Dickson & Joan Ajim	Vol.2698 Fol.149
4	6,831 S.F./ 634.6 m ²	Michael & Stella Critchlow	Vol.2663 Fol.551
5	7,356 S.F./ 683.4 m ²	Mayhew Hypolite	Vol.3046 Fol.239
7	10,519 S.F./ 977.2 m ²	George & Marjorie Hernandez	Vol.2913 Fol.183
8	26,598 S.F./2,471.0 m ²	Pamela Althea Smith	Vol.2660 Fol.37
9	21,780 S.F./2,023.4 m ²	Hugh & Agatha Joseph	Vol.2672 Fol.555
10	21,780 S.F./2,023.4 m ²	Clarisa Camacho & Harold Julien	Vol.2749 Fol.85
13	21,780 S.F./2,023.4 m ²	Urban Mitchell	Vol.2780 Fol.241

81/1991

1052

183