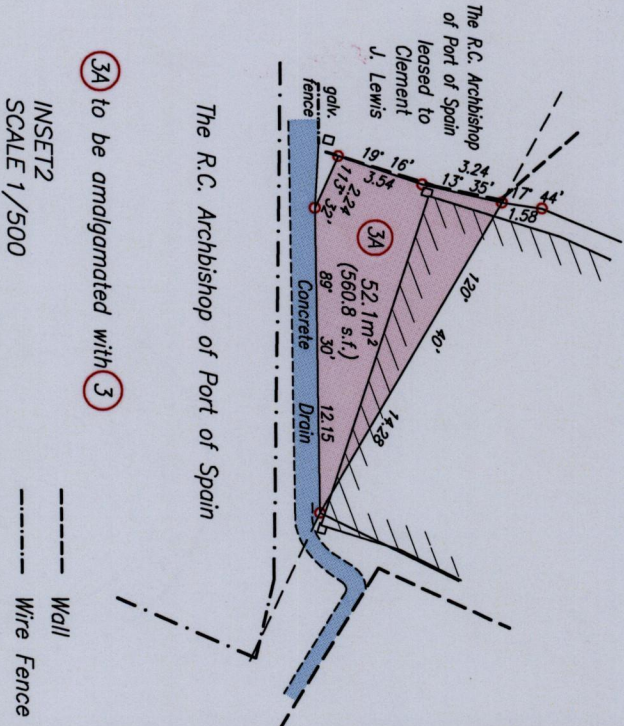


RPO Vol. 783 Fol. 117
CT Vol. 3077 Fol. 145

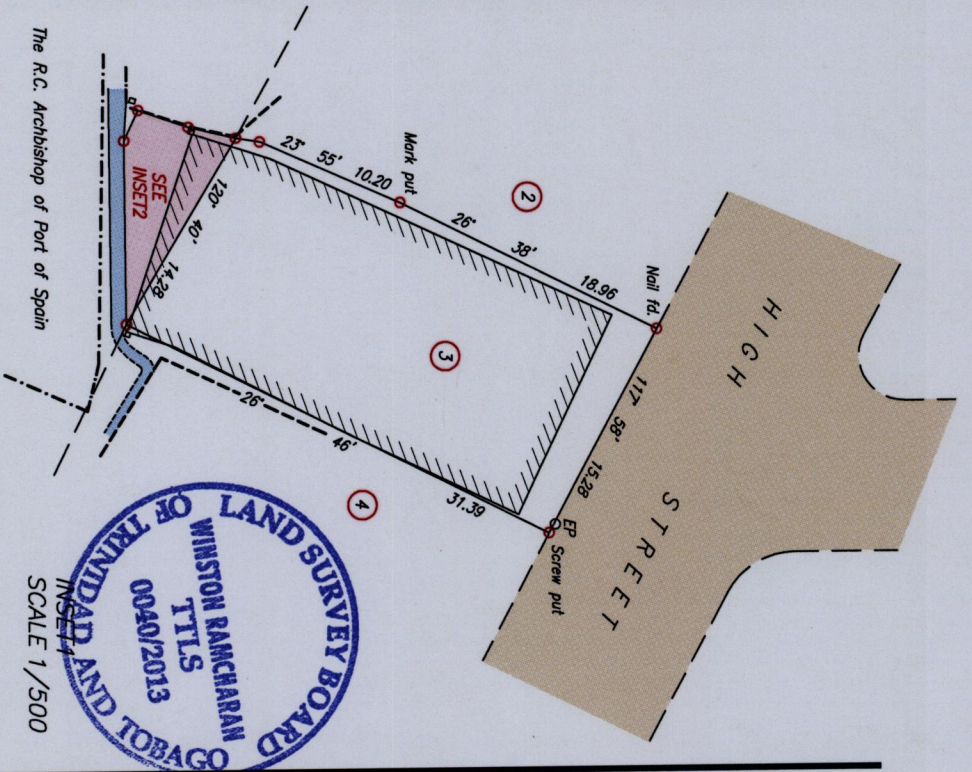


Approved.....
Director of Surveys

Denotes Nail put unless stated otherwise
Bearings are Cassini Grid based on Solar Observations

PLAN of a Parcel of land coloured pink in the City of San Fernando
Containing fifty two point one square metres
Surveyed by me with due authority in April 2013 for Charles Hadeed
Certified Correct in accordance with Regulation 25 (1) of the Land Surveyors' Regulations 1998,

Checked by.....
Entered on.....

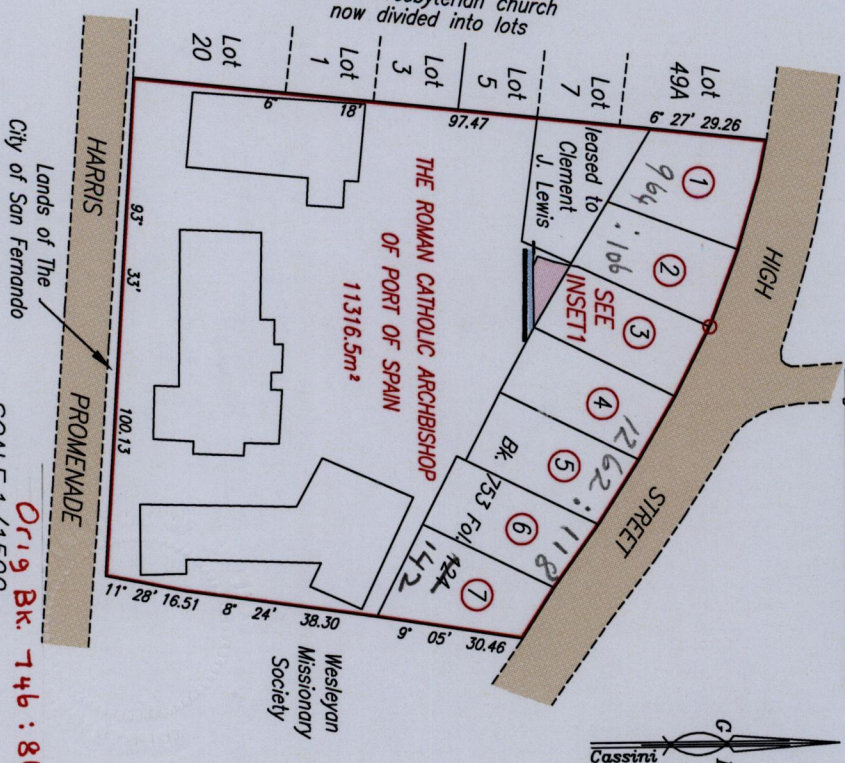


Station	Bearing	Distance	Station
A	288° 30'	89.11	Bross (In L.S.)

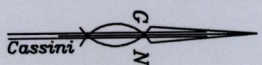
A Nail pt. N 11356912 Hand Held GPS +/- 5m
E 668147 UTM proj. npp. 1955 datum

SCALE 1/500

Property of the Inc. Trustees of the Presbyterian church now divided into lots



Cadastral Sheet G.31.
City of San Fernando
County of Victoria
High Street, San Fernando



Lot#	Name	Cert. of Title Vol./Fol.	Area (s.f.)
1	C. J. Lewis	C.T. Vol.1610 :205	5359
2	C. J. Lewis	C.T. Vol.1610 :217	4800
3	Schnapp & Son Ltd.	C.T. Vol.1610 :191	5018
4	Kiran Singh & Others	C.T. Vol.3322 :323	5110
5	Kiran Singh & Others	C.T. Vol.3322 :323	5016
6	Kiran Singh & Others	C.T. Vol.3322 :323	5025
7	Kiran Singh & Others	C.T. Vol.3322 :323	4900

SCALE 1/1500

Distances are in metres
Orig Bk. 746:86

Trinidad & Tobago Land Surveyor 11th November 2013

Ami Stafford-Rivera

8710786
818483
12600:118