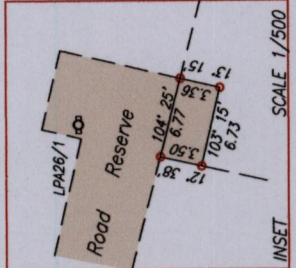
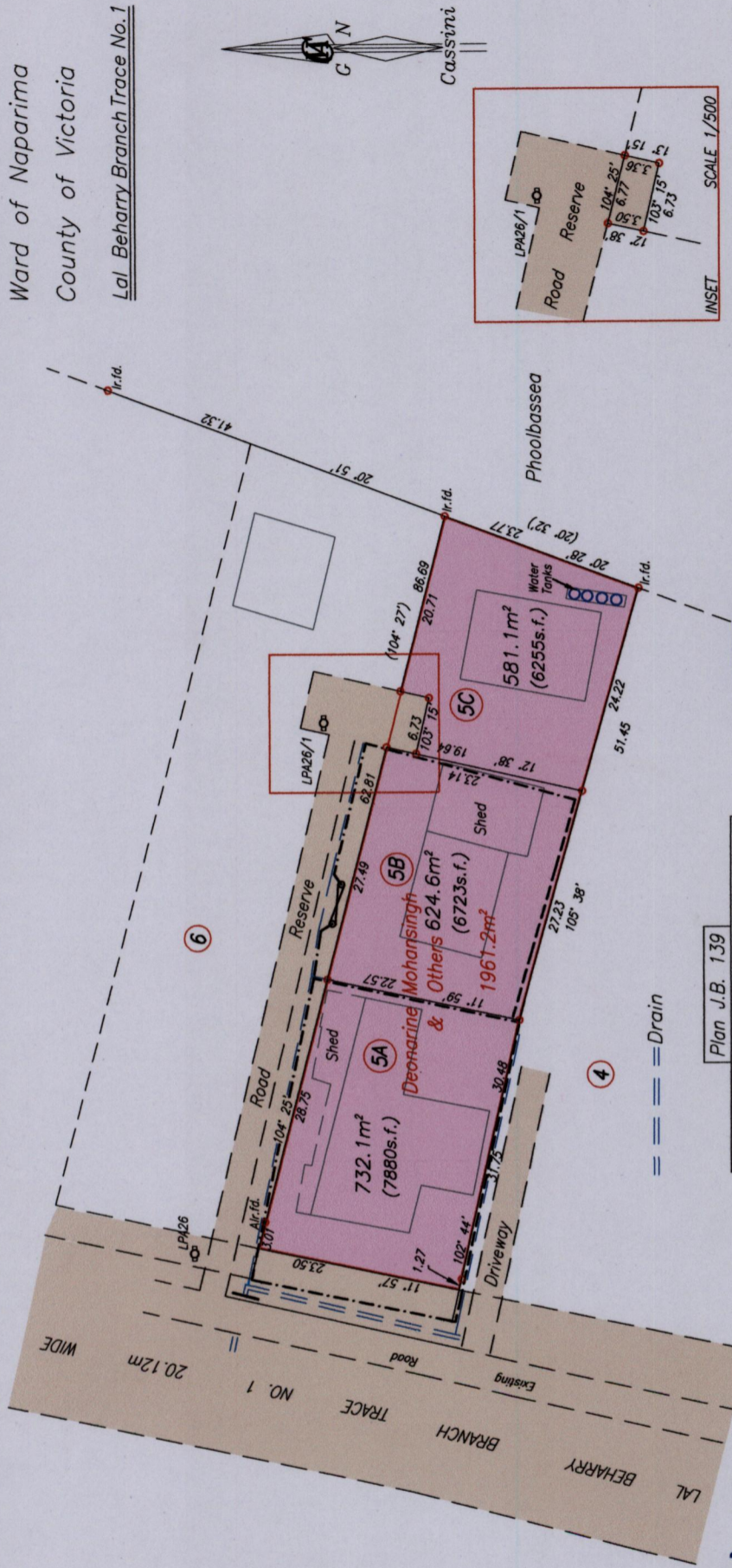


Ward of Naparima
County of Victoria
Lal Beharry Branch Trace No. 1

1652

1688



--- Wall
- - - - - Wire Fence
SCALE 1/750
Distances are in metres
Orig. Plan J.B. 139



Plan J.B. 139
A Ir.f.d. N. 1128 153 Hand Held GPS
E. 0670 613 WGS84 Zone20

Approved.....
Sanjeev
Director of Surveys 22/10/13

○ Denotes Iron Put unless otherwise stated
Bearings are Cassini Grid based on Solar Observations
PLAN of 3 Parcels of land coloured pink in the Ward of Naparima
Containing together one nine three seven point eight square metres
Surveyed by me, with due authority, in September 2012
Certified Correct In accordance with Regulation 25 (1) of the Land Surveyors' Regulations 1998,

Winston Ramcharan

Checked by..... Entered on.....
Trinidad & Tobago Land Surveyor (11th November).....2013