

Process ID # 48433

U.P.R.N No.....

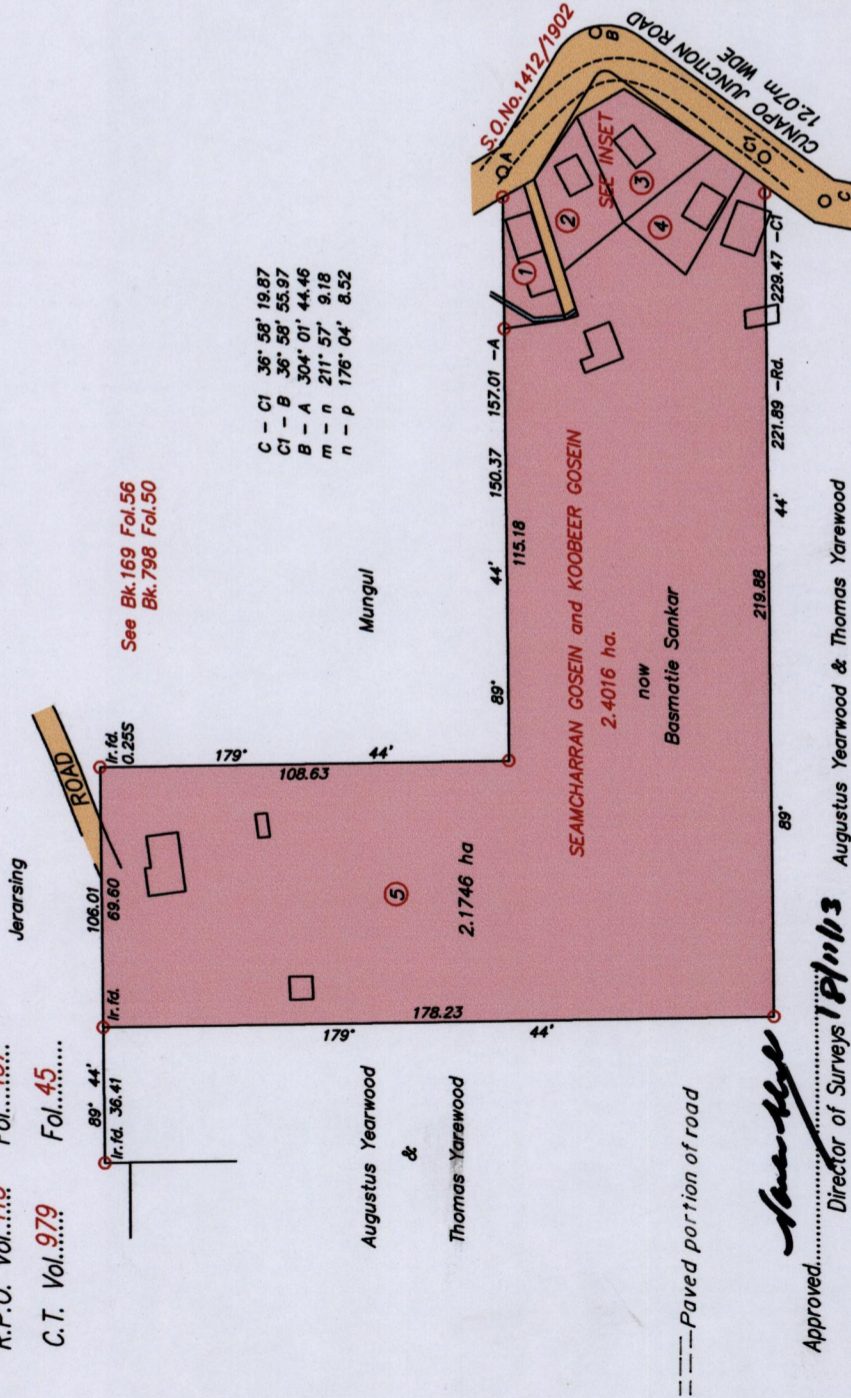
R.P.O. Vol. 113 Fol. 457

C.T. Vol. 979 Fol. 45

Cadastral Sheet E.2. I. 35C
1/a

Ward of Turure
County of St. Andrew

INSET



Orig Survey Bk. 798 : 50

SCALE 1/2000

Distances are in metres
Co-ordinates obtained from hand held GPS.
WGS 84 U.T.M. Zone 20 -/+3.00m

○ Denotes Iron put unless otherwise stated
Bearings are Cassini Grid based on Solar Observations
Note : To obtain compass bearings add 16 minutes

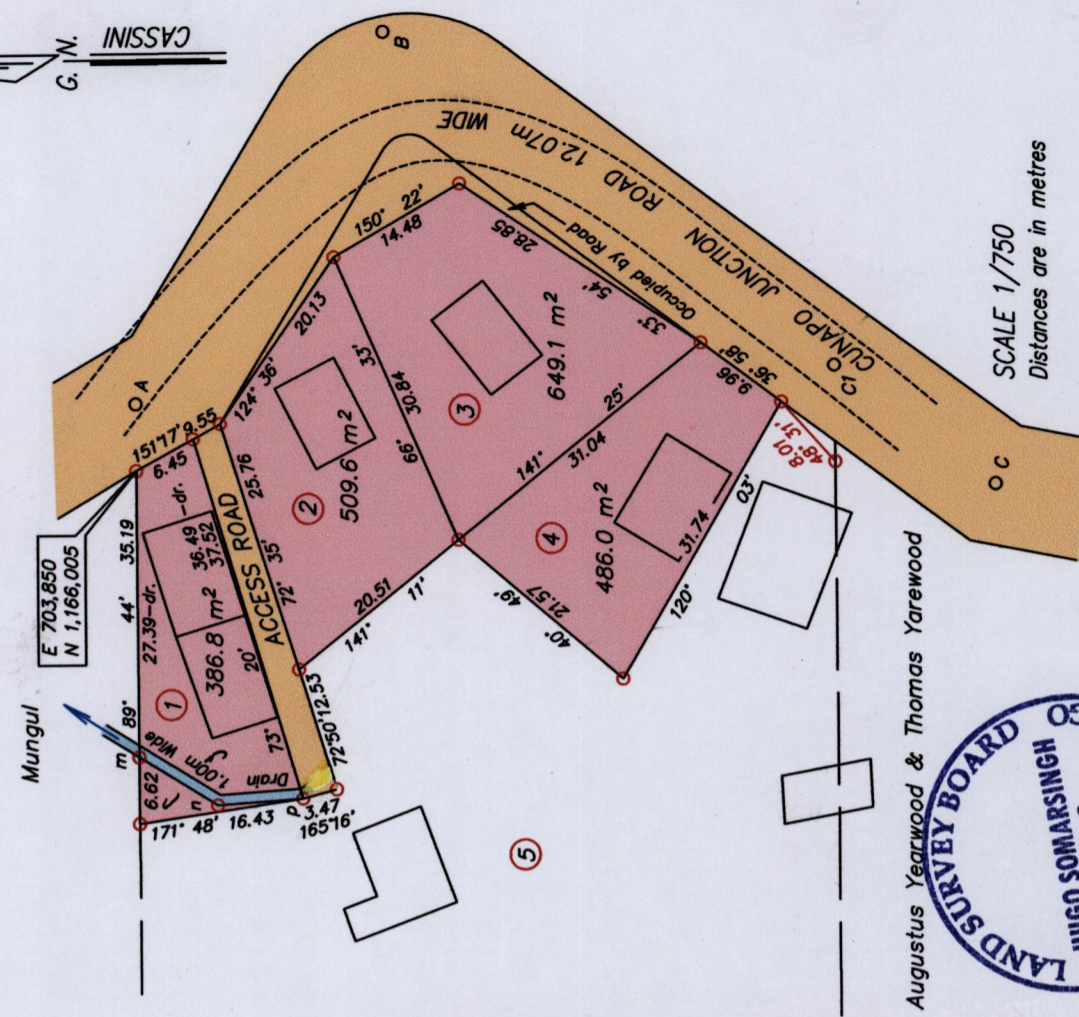
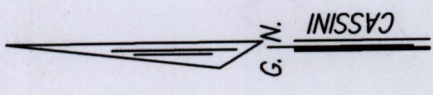
Plan of 5 Parcels of land coloured pink in the Ward of Turure
Containing together two point three seven seven eight hectares
Surveyed by me, with due authority in April 2008

Certified correct in accordance with Regulation 25 (1) of the Land Surveyors' Regulations 1998.

Checked by.....
Entered on.....
Trinidad and Tobago Land Surveyor.....2013

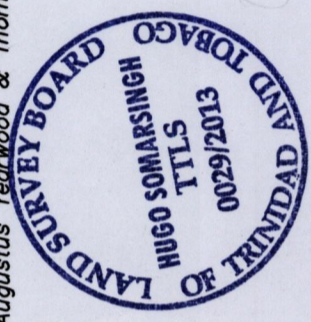
1652

156



SCALE 1/750
Distances are in metres

Augustus Yearwood & Thomas Yearwood



009798:50