

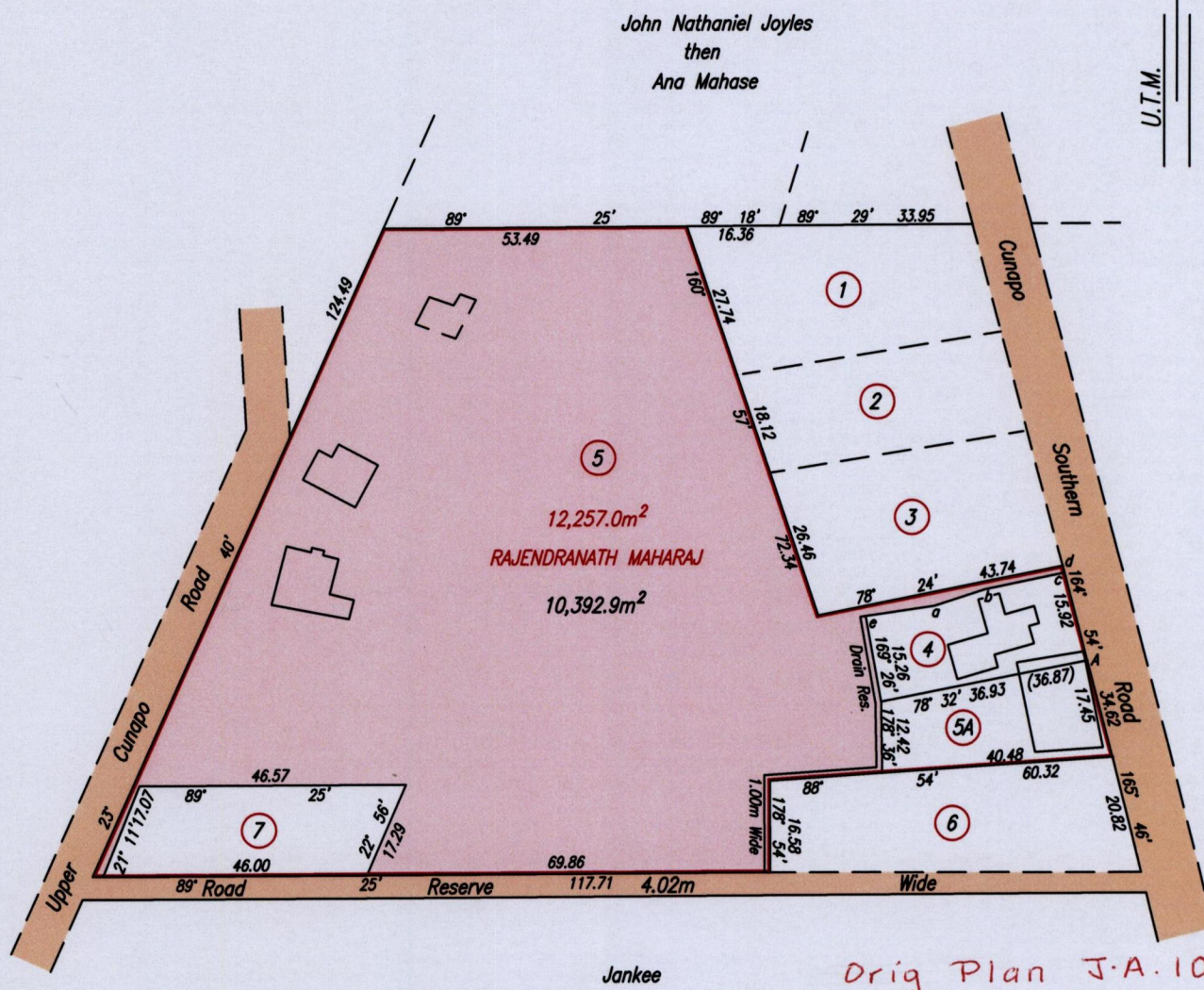
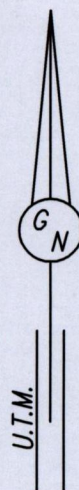
R.P.O. Vol. 55 Fol. 623  
C.T. Vol. 3313 Fol. 17

REMAINING PORTION

25F  
Cadastral Sheet E.2.E. 3/b  
Ward of Turure  
County of St. Andrew  
J.A. 109

U.R.P.N. . . . . .

Process ID # G5830



Orig Plan J.A. 109  
See Bk. 1652:183

Approved

*[Signature]*  
Director of Surveys  
13/6/13

Point A

Co-ordinates obtained by Hand Held G.P.S. (WGS84 U.T.M. Zone 20 )  
Accuracy ± 8m  
E 704388.00m  
N 1168436.00m

Sta.	Bearing	Dist.
e - a	81° 15'	12.24
a - b	71° 57'	9.28
b - c	77° 56'	14.23
d - c	164° 54'	1.25

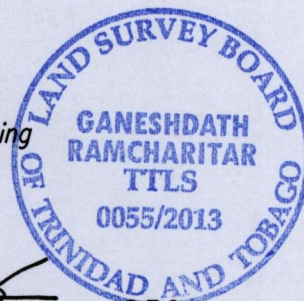
SCALE 1/1250  
Distances are in metres

Note: To obtain Cassini bearing + 18 minutes

Bearings are U.T.M. Grid based on Solar Observations

Plan of twelve thousand two hundred and fifty seven point zero square metres originally transferred to Rajendranath Maharaj, showing a portion coloured pink and containing ten thousand three hundred and ninety two point nine square metres being the remainder after three previous transfers of another portions of the land.

In accordance with Regulations 25 (1) of the Land Surveyors' Regulations 1998, I certify that this plan represents the remaining portion.



Entered on . . . . .

*[Signature]*  
P.T.O.

Checked by *[Signature]* 21/5/2013 Trinidad & Tobago Land Surveyor

*[Signature]* . . . . . 2013



Legend			
Lot #	Name	C.T. Vol. : Fol.	Area
7	JAMES DODDS & SHARON MOHAMMED-DODDS	4496 : 183	733.7m <sup>2</sup>
5A	WINSTON ROBINSON & RODNEY ROBINSON	5077 : 197	572.2m <sup>2</sup>
4	LUCY PICKERING	5458 : 193	558.2m <sup>2</sup>



1652/15