

1652

148

R.P.O. Vol. 81 Fol. 509

C.T. Vol. 3573 Fol. 223

U.P.R.N. No.

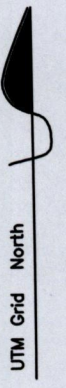
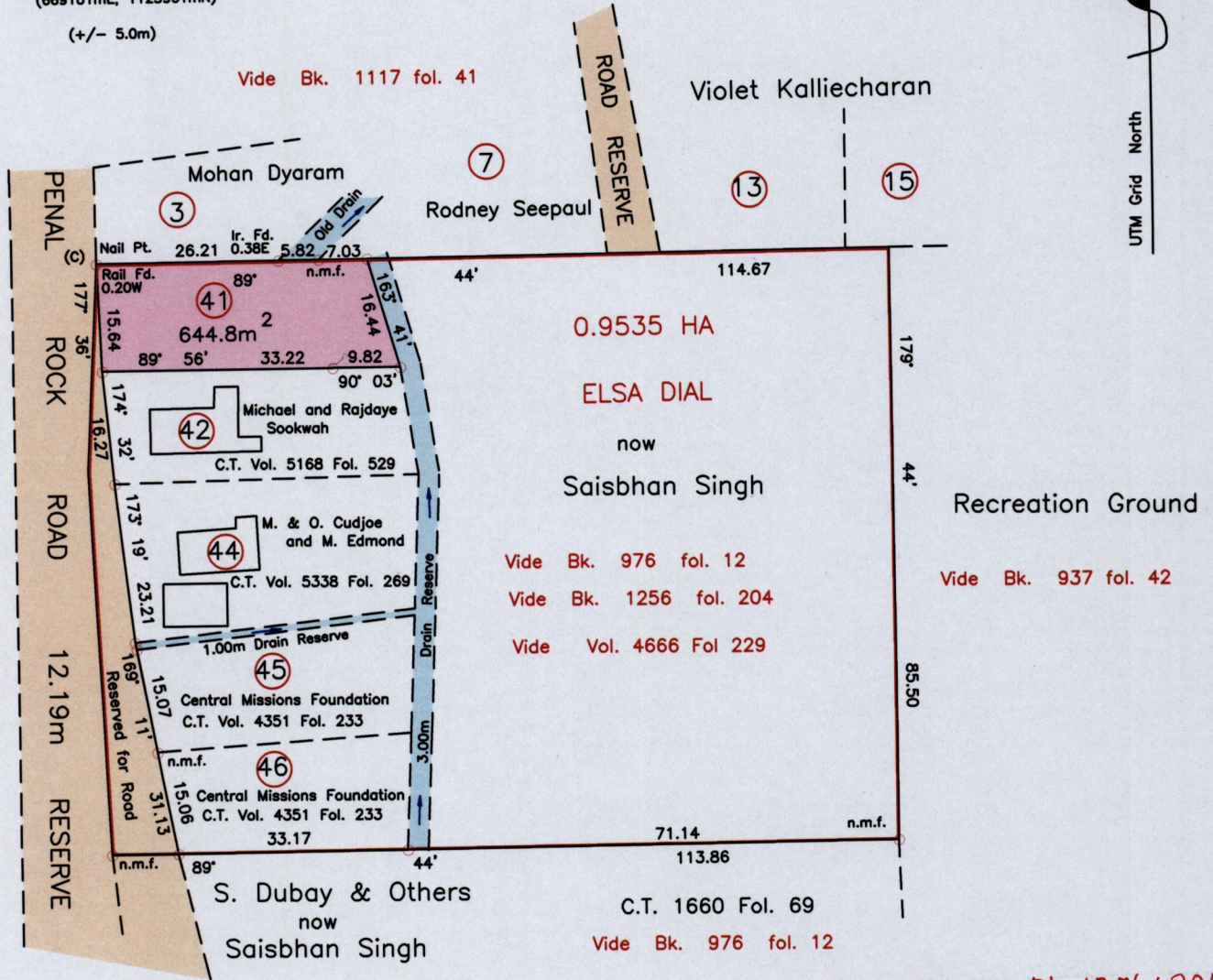
PROCESS ID # 69797

Cadastral Sheet G.13.J.  $\frac{63}{3/a}$

Ward of Siparia

County of St. Patrick

(C)  
(U.T.M. 20, Naparima)  
(669101mE, 1123961mN)  
(+/- 5.0m)



Orig. Survey Bk. 1256:204

Approved.....  
Director of Surveys *[Signature]* 13/11/13

SCALE 1 : 1000

Distances are in metres.

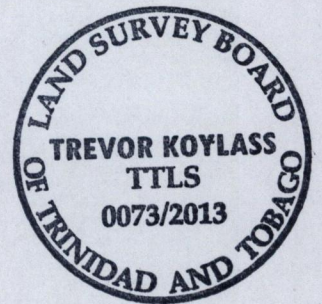
○ Denotes Ir. Fd. unless otherwise stated.

Bearings are UTM Grid based on Solar Observations.

PLAN of a Parcel of Land coloured pink in the Ward of Siparia  
Containing Six Hundred and Forty Four Point Eight square metres.

Surveyed by me, with due authority in March 2006 for Saisbhan Singh.

Certified correct in accordance with Regulation 25 (1) of the Land Surveyors Regulations 1998,



Checked by.....

Entered on .....

*[Signature]*  
Trinidad and Tobago Land Surveyor ..... 8<sup>th</sup> June 2013.