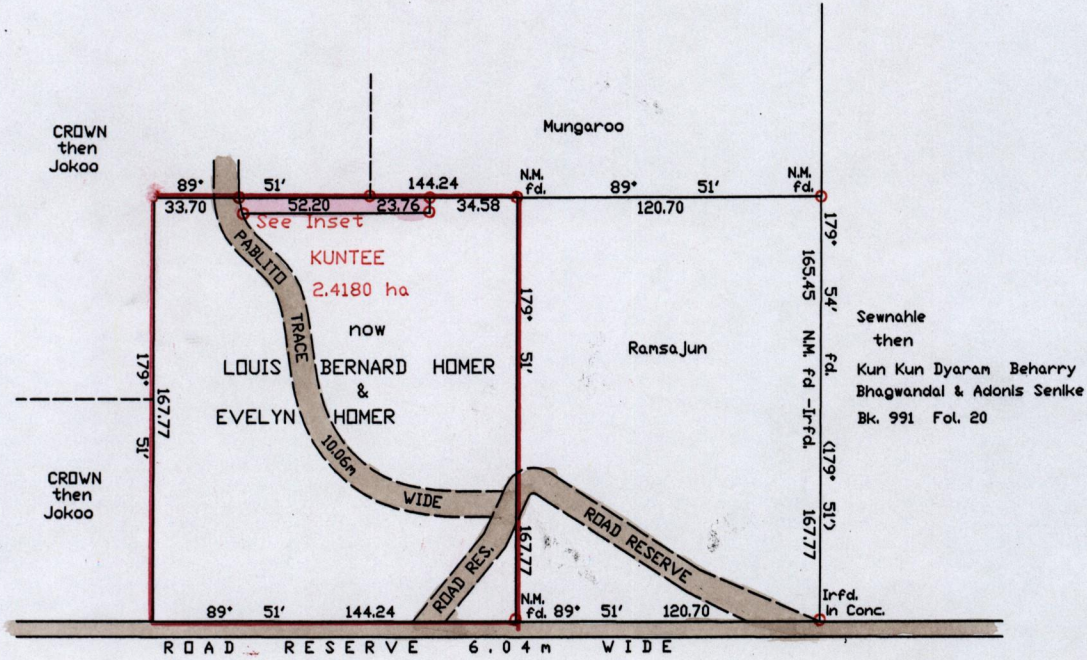


R.P.O.Vol. Fol.
C.T.Vol. 1903 Fol. 351
Bk. 459 Fol. 69
PROCESS ID # 73480

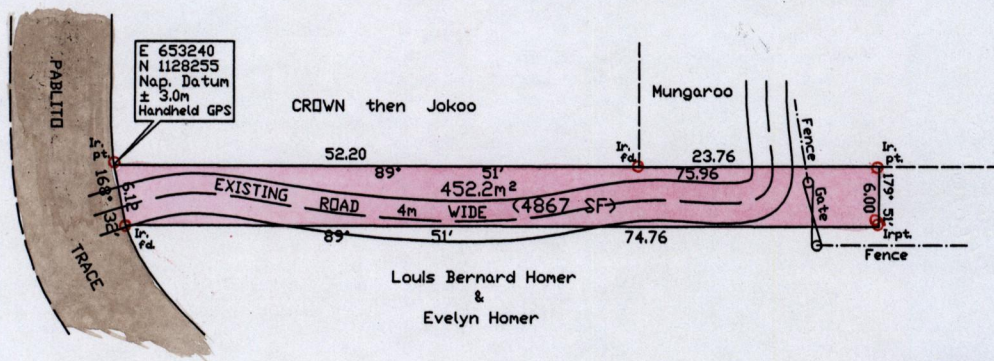
Ward of La Brea
County of St. Patrick
Cadastral Sheet G.6.M. $\frac{62C}{3/C}$



SCALE 1/3000

Distances are in metres

INSET



Orig Survey BK. 459:69

Approved

[Signature]

Director of Surveys 13/11/13



SCALE 1/750

Note: To obtain Cassini Grid add 18 minutes

Distances are in metres

PLAN of a Parcel of land coloured pink in the Ward of La Brea
Containing four hundred and fifty two point two square metres
Surveyed by me with due authority in July 2013

Certified correct in accordance with Regulation 25(1) of the Land Surveyors Regulations 1998

Checked by 25.10.2013

[Signature]

Entered.....

Trinidad & Tobago Land Surveyor 15th May 2013 2013.