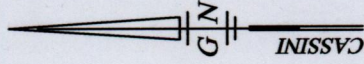
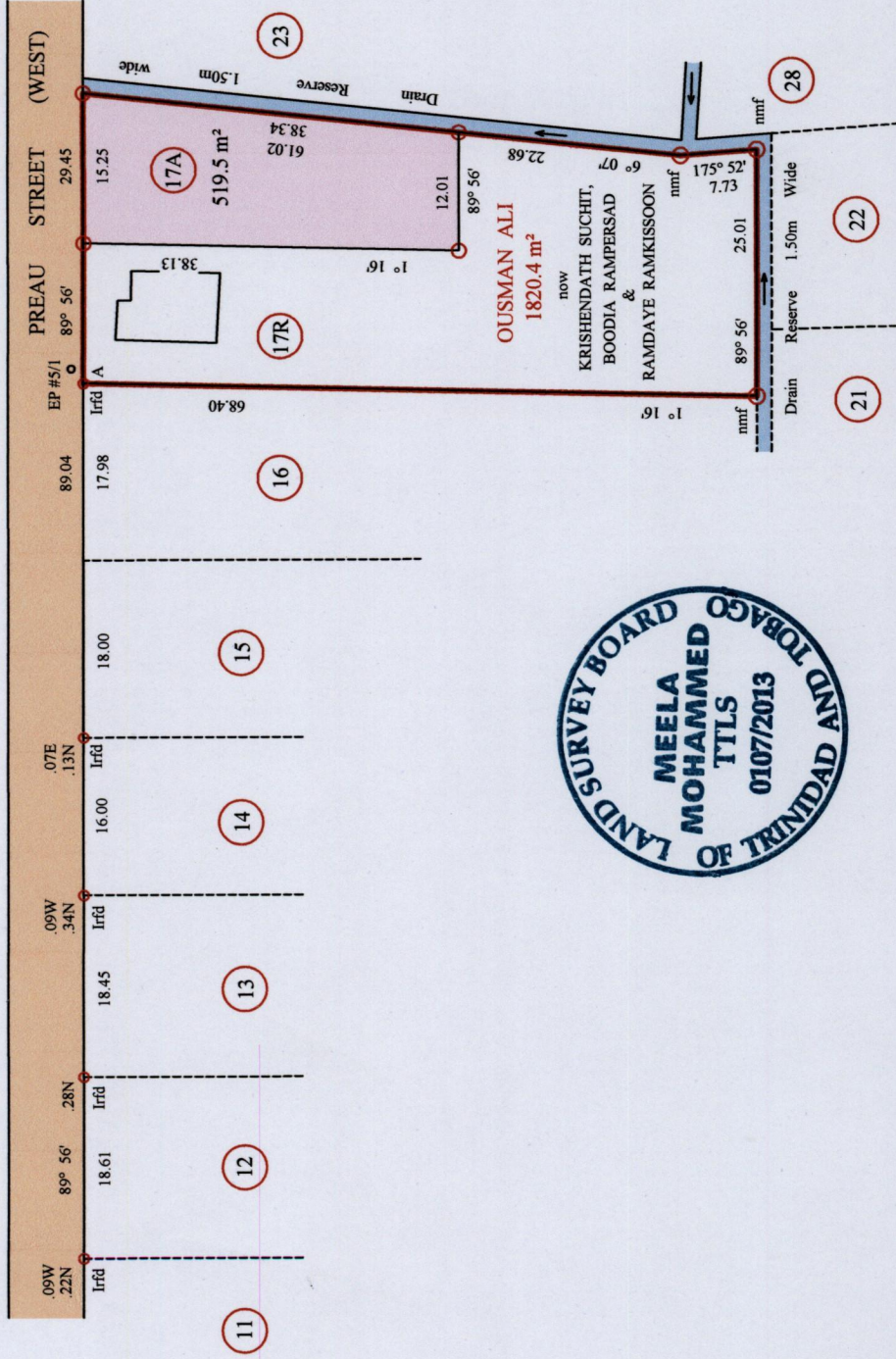


Ref. Plan RH 20



1652

132

Approved

.....
 Director of Surveys 21/11/13

PLAN of a parcel of land coloured pink in the Ward of Savana Grande
 Containing five hundred and nineteen point five square metres
 Surveyed by me, with due authority, in April 2012.
 Certified correct in accordance with Regulation 25 (1) of the Land Surveyors Regulations 1998.

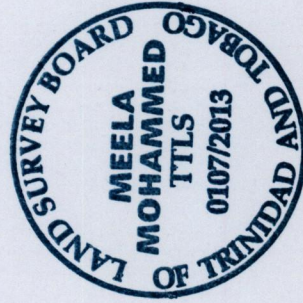
Checked by 28.16.09.2013
 Entered on

.....
 Meela Mohammed
 Trinidad and Tobago Land Surveyor

12th August 2013

Orig Survey Plan R.H. 20

○ denotes Iron put except otherwise stated
 Bearings are Cassini Grid based on Solar Obs.
 Distances are in Metres
 SCALE 1/750



Irfid A
 Hand-held GPS Coords.
 UTM Zone 20, Napatrima 1955
 E 0684697 ± 6m
 N 1128025