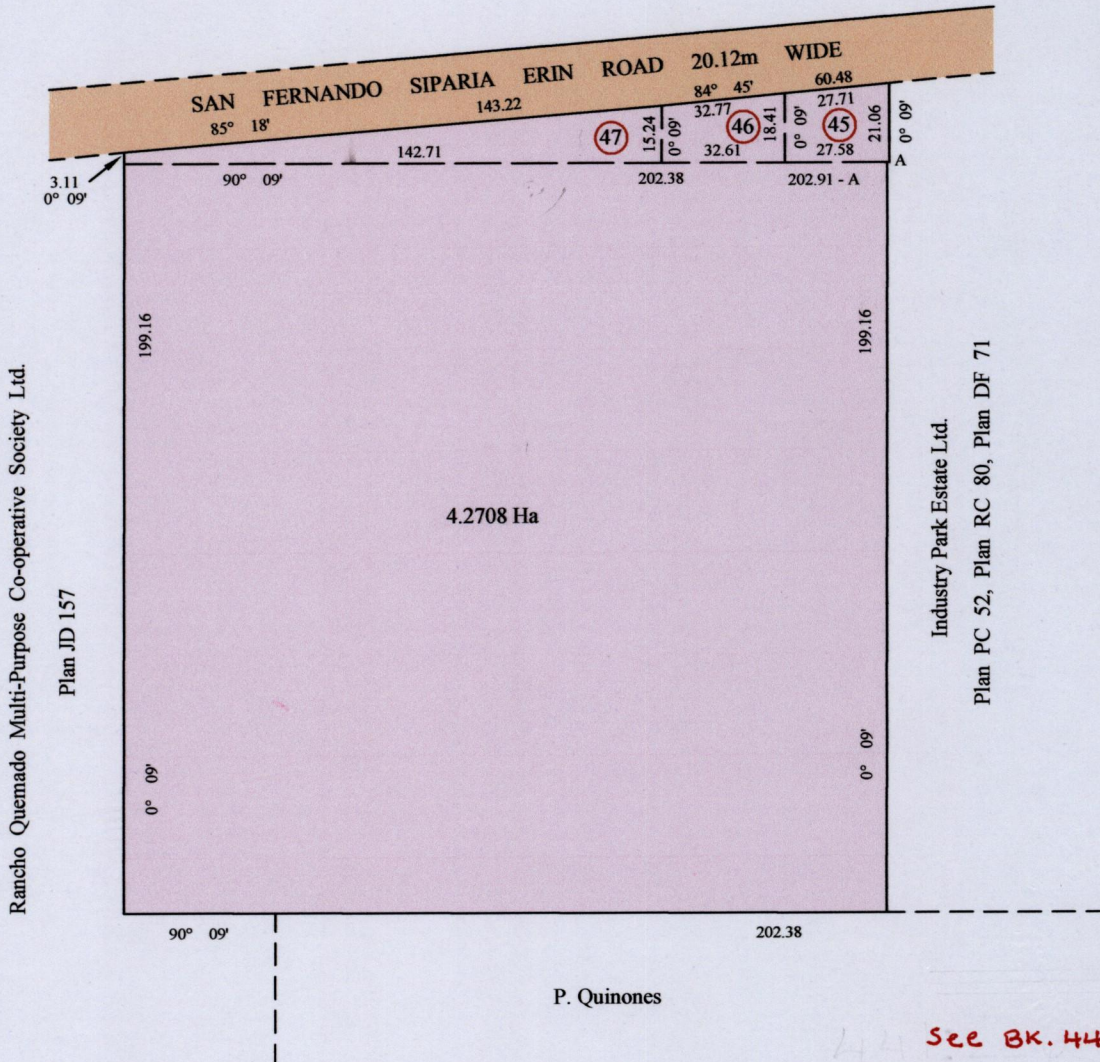


Process ID # 74272
RPO Vol Fol
CT Vol Fol

Cadastral Sheet G.21.A, 72F
County of St. Patrick 1/c
Ward of Erin
PALO SECO

CONSOLIDATION PLAN

Refs. Bk 944 Fols 12, 13
Bk 936 Fol 200
Bk 441 Fol 226



See BK. 441: 226
944: 226

45	CT Vol. 1513 Fol. 397	0.0545 Ha
46	CT Vol. 1513 Fol. 397	0.0550 Ha
47	CT Vol. 1486 Fol. 57	0.1309 Ha
	CT Vol. 937 Fol. 277	4.0304 Ha

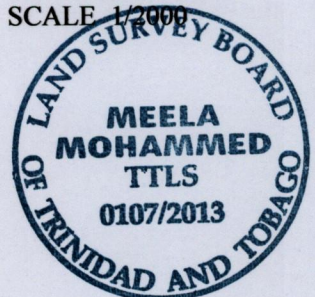
Point A
Hand-held GPS Coords.
UTM Zone 20, Naparima 1955
E 0652579 ± 6m
N 1114933

Approved

Director of Surveys

7/11/13

Bearings are Cassini Grid.
Distances are in Metres
SCALE 1/2000



PLAN of a parcel of land coloured pink in the Ward of Erin
Containing four point two seven zero eight Hectares
Prepared by me, with due authority, in August 2013 for Horace Krishna Rajkumar.
In accordance with Regulation 25 (1) of the Land Surveyors' Regulations 1998,
I certify that this plan represents the parcels to be consolidated.

Checked by
Entered on

Meela Mohammed
Trinidad and Tobago Land Surveyor

30th August 2013