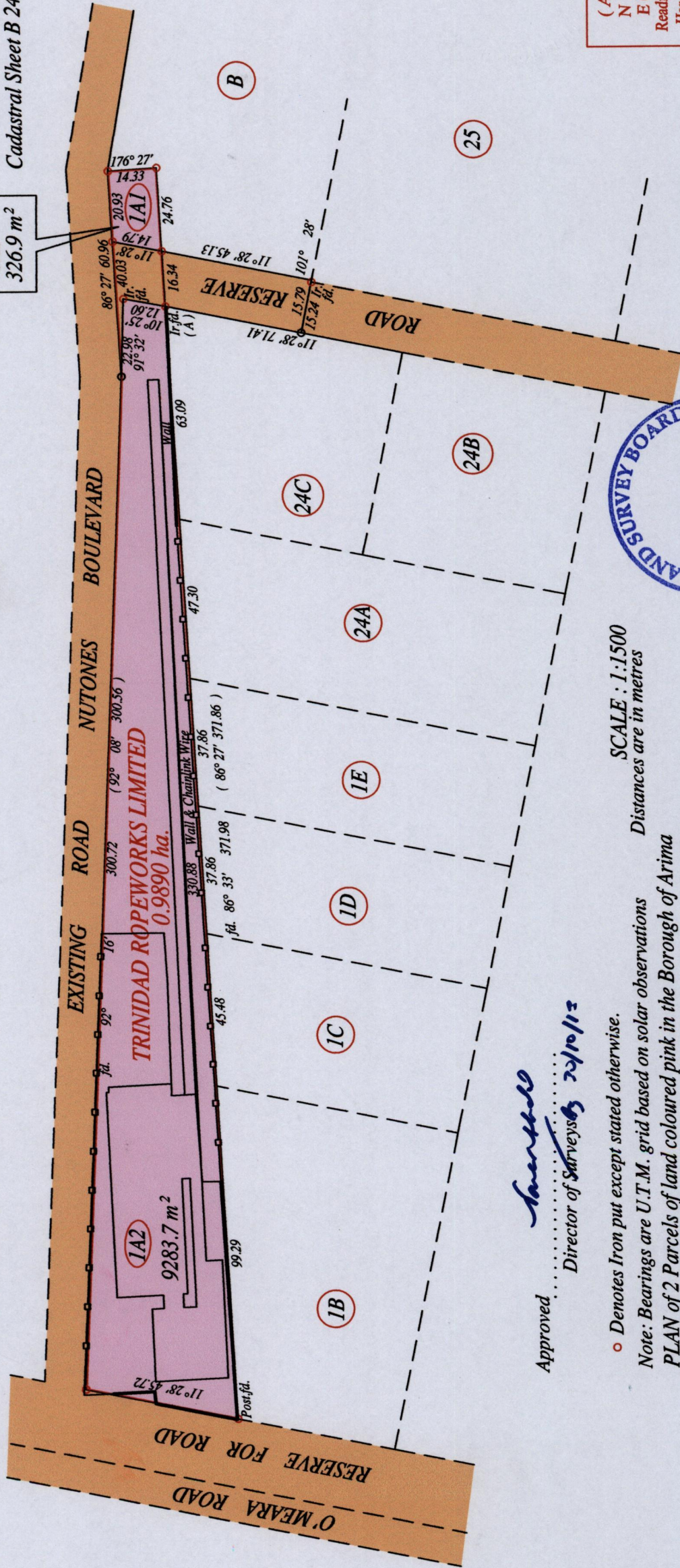


Process ID # 74223
R.P.O. Vol. Fol.
C.T. Vol. 1846 Fol. 269

Borough of Arima
County of St. George
Cadastral Sheet B 24 H, 24 C
3/b
Plot (IA1) & B
To be amalgamated
IA1
326.9 m²



Approved
Director of Surveys 29/10/13

o Denotes Iron put except stated otherwise.
Note: Bearings are U.T.M. grid based on solar observations
Distances are in metres
SCALE : 1:1500
PLAN of 2 Parcels of land coloured pink in the Borough of Arima
Containing together nine thousand six hundred and ten point six square metres
Surveyed by me, with due authority, in April 2013
Certified correct in accordance with Regulation 25 (1) of the Land Surveyors Regulations 1998.



Vide Plan D C 77
Plan P A 145

original survey - D.C.77

Checked by
Entered on
Winston Ramcharan
Trinidad & Tobago Land Surveyor 29th August... 2013

(A) Ir. fd.
N 1174250
E 0687309
Reading taken with
Handheld G.P.S.
U.T.M. 20 Napartima
+ 5m.