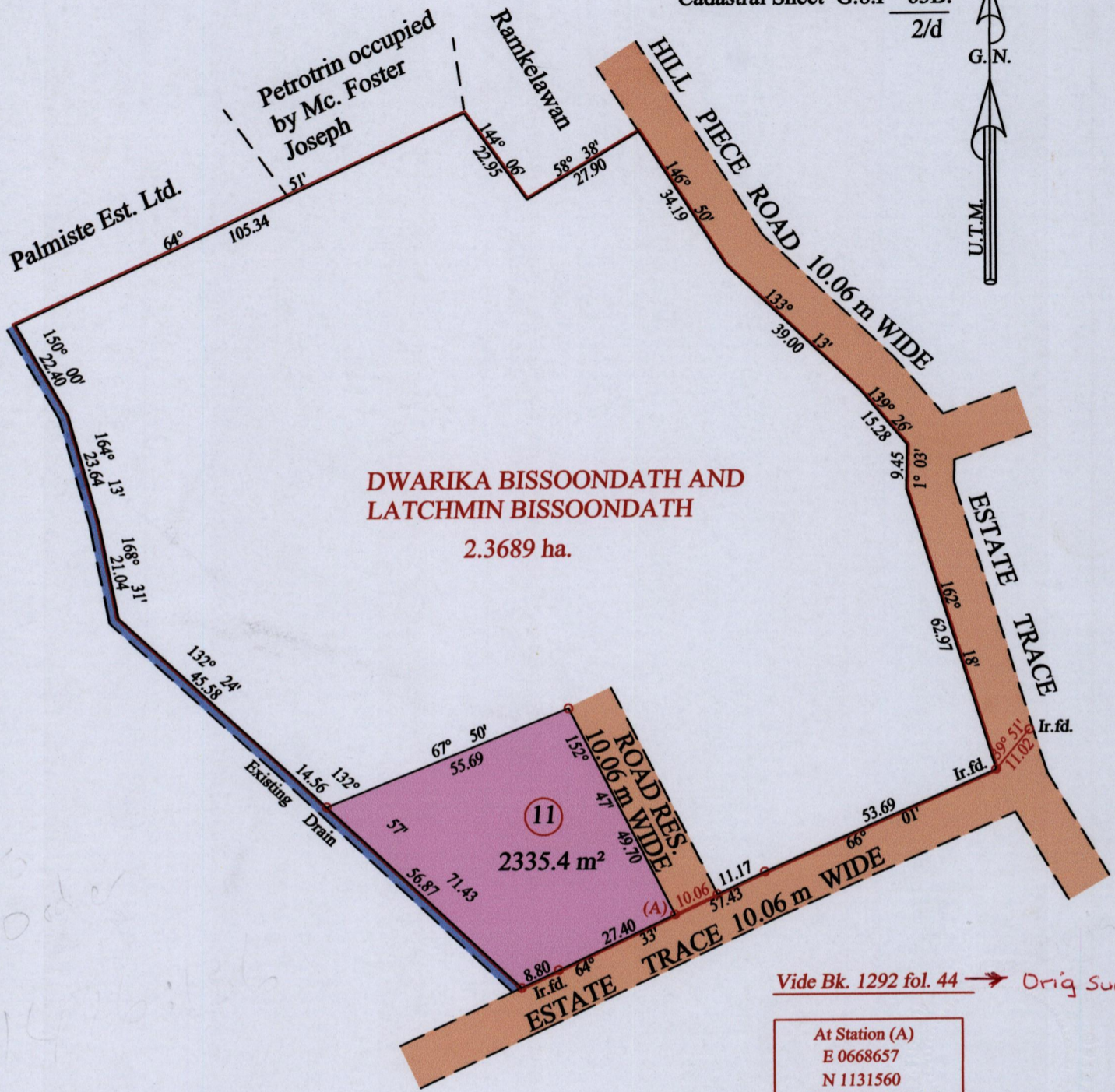


R.P.O. Vol. Fol.
C.T. Vol. 5280 Fol. 263

Ward of Naparima
County of Victoria
Cadastral Sheet G.8.F 63B.
2/d



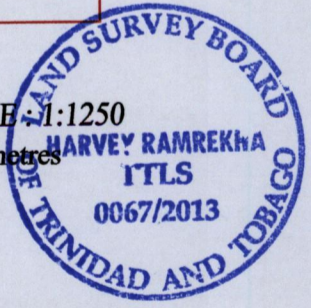
Vide Bk. 1292 fol. 44 → Orig Survey

At Station (A)
E 0668657
N 1131560
Reading taken with
Handheld G.P.S.
U.T.M. Zone 20
Naparima
± 5 m.

Approved *[Signature]*
Director of Surveys *[Signature]* 24/10/13

○ Denotes Iron put except stated otherwise.
Note: Bearings are U.T.M. grid based on solar observations
PLAN of a parcel of land coloured pink in the Ward of Naparima
Containing two thousand three hundred and thirty five point four square metres
Surveyed by me, with due authority, in July 2013

SCALE: 1:1250
Distances are in metres



Certified Correct in accordance with Regulation 25(1) of the Land Surveyors Regulations 1998

Checked by *[Signature]*

Entered on Trinidad & Tobago Land Surveyor 22.10.2013