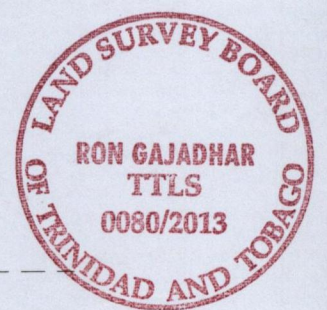
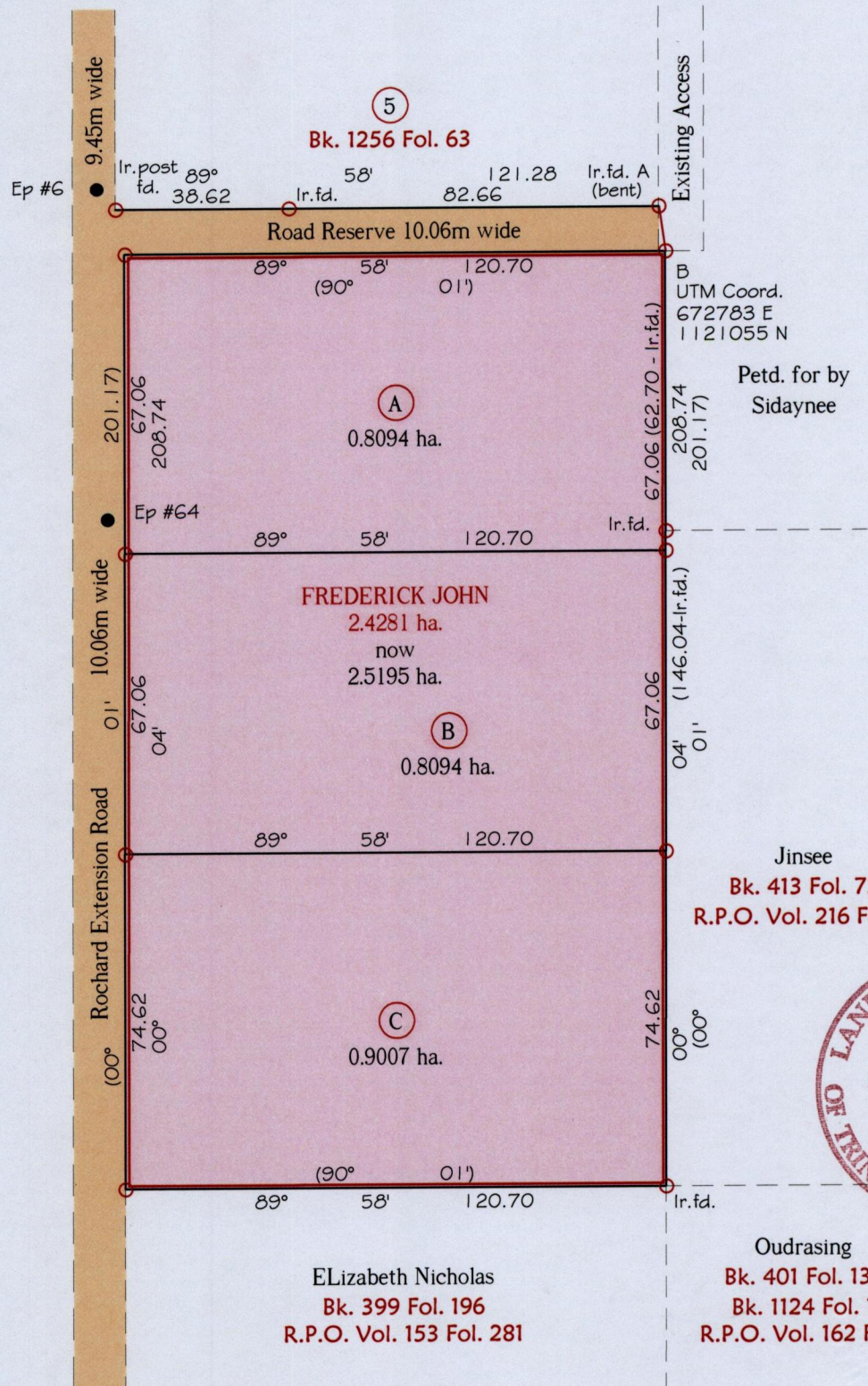


R.P.O Vol. 162 Fol. 47
 C.T. Vol. Fol.
 Address - Lot# A-C Rochard Ext. Rd.,
 Penal.

Ward of Siparia
 County of St. Patrick
 Cadastral Sheet (G.18.D), 73C
 2/a



STATION	BEARING	DISTANCE
A-B	171° 37'	10.16

Orig survey Bk. 401:119

Approved

 Director of Surveys 2013.2.21

Note - UTM (Nap Zone 20) Coordinates obtained from hand held GPS receiver ± 5.00m

Ref:-Bk. 401 Fol. 119
 SCALE 1:1500

○ Denotes Iron put except stated otherwise.
 Note: Bearings are Cassini grid based on solar observations Distances are in metres.
 Plan of 3 Parcels of land coloured pink in the Ward of Siparia.
 Containing together two point five one nine five hectares.
 Surveyed by me, with due authority, in October 2011
 Certified correct in accordance with Regulation 25(1) of the Land Surveyors' Regulations 1998.

Checked by
 Entered

Trinidad & Tobago Land Surveyor 28.01.2013