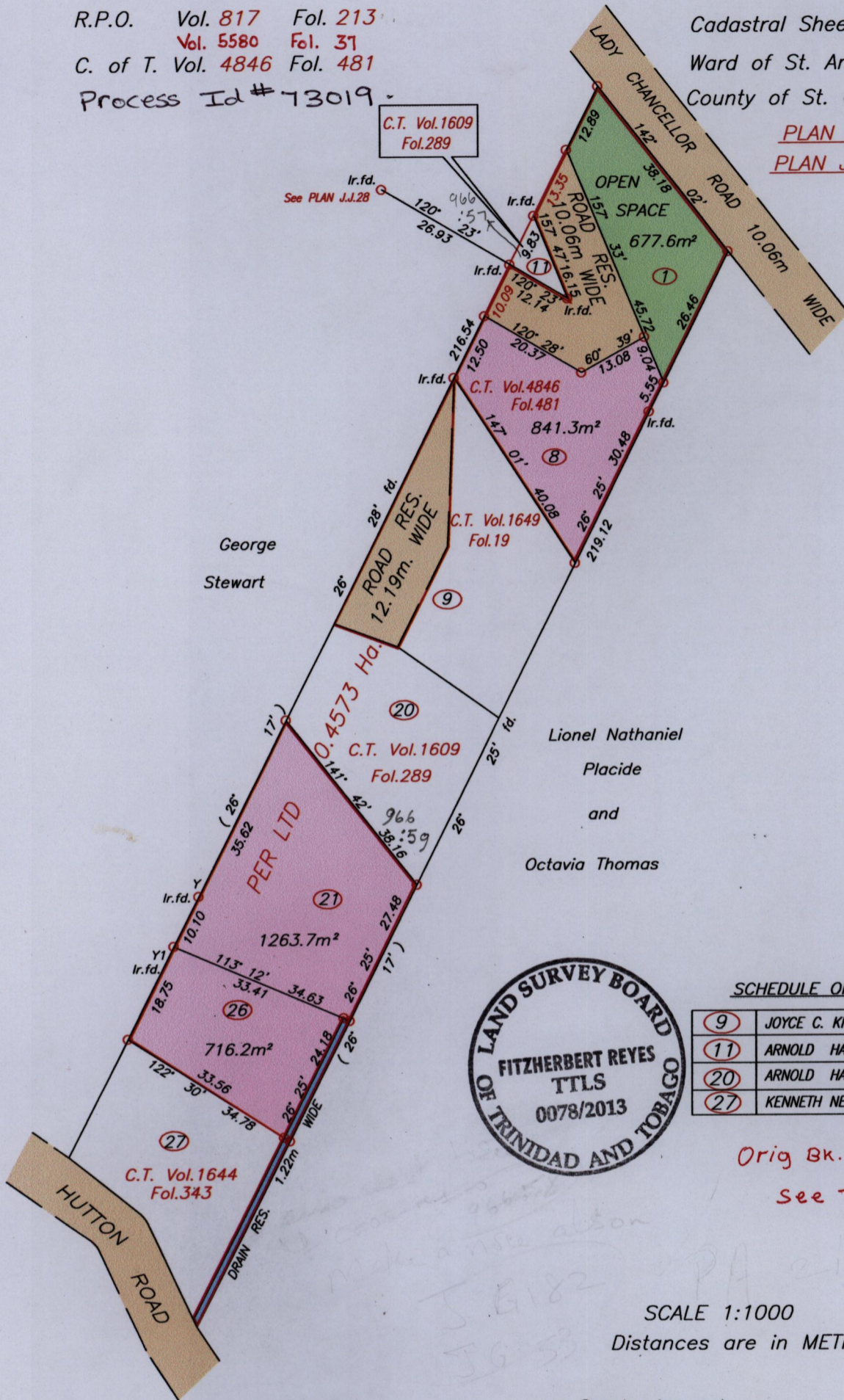
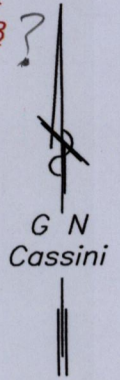


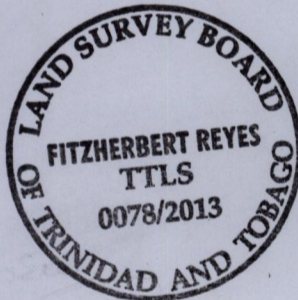
R.P.O. Vol. 817 Fol. 213
Vol. 5580 Fol. 31
C. of T. Vol. 4846 Fol. 481
Process Id # 73019

13D
Cadastral Sheet 2/d A.20.B.
Ward of St. Ann's
County of St. George

PLAN P.A.21
PLAN J.J.128



Lionel Nathaniel
Placide
and
Octavia Thomas



SCHEDULE OF LOTS

9	JOYCE C. KNAGGS
11	ARNOLD HAMEL-SMITH
20	ARNOLD HAMEL-SMITH
27	KENNETH NETTO

Orig Bk. 966 fol. 58
see J.G.53
J.E.182

SCALE 1:1000
Distances are in METRES

o Denotes Iron put
To obtain Compass Bearing subtract 2 minutes

Approved
Director of Surveys 3-17/10

PLAN of 4 Parcels of land coloured pink and green in the Ward of St. Ann's
Containing together zero point three four nine nine hectare
Surveyed by me, with due authority, in September 2009
Certified correct in accordance with Regulation 25 (1) of the Land Surveyors Regulations 1998.

Checked by J.A. Reyes T.T.L.S.
Entered on 10 July 2013