

R.P.O Vol. 708 Fol. 213
 C.T. Vol. 4804 Fol. 155

Process ID * S9355'

Coordinates

Iron Found X : N 1126798

E 677958

Error Statement : ±4m

Datum Definition : U.T.M. Zone 20 Naparima

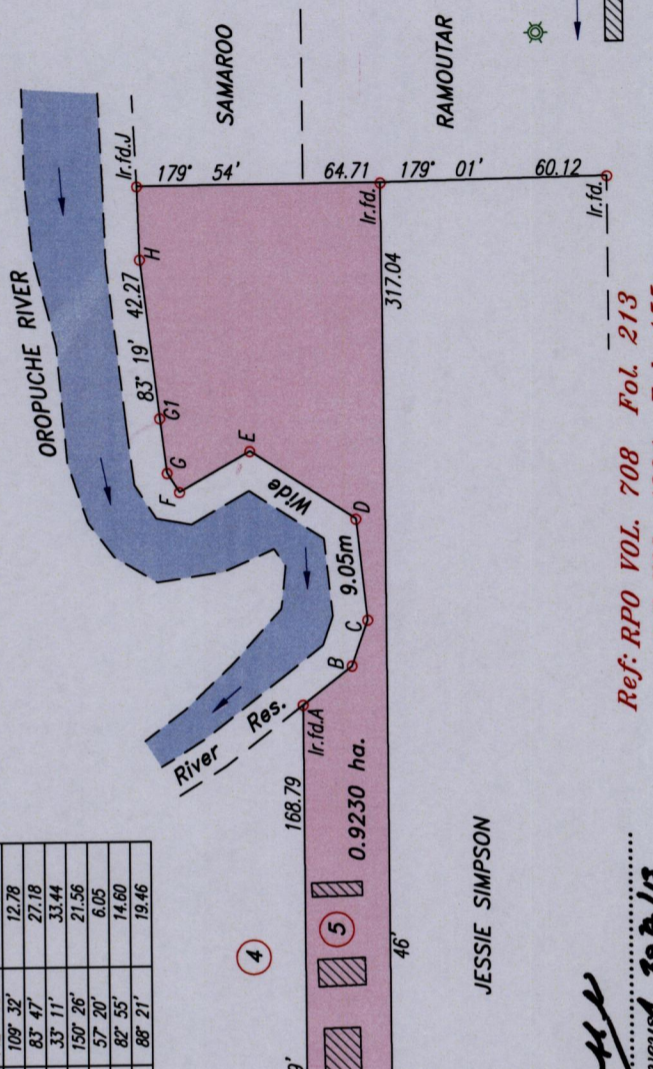
Source : Magellan Hand Held GPS

Ward of Savana Grande
 County of Victoria
 Cadastral Sheet G.14.C. 64D
 2/a

Parcel Address: Kanhai Trace,
 Barrackpore

STATION	BEARINGS	DISTANCE
Ir.f.d.A-B	142° 15'	16.51
B-C	109° 32'	12.78
C-D	83° 47'	27.18
D-E	33° 11'	33.44
F-E	150° 26'	21.56
F-G	57° 20'	6.05
G-G1	82° 55'	14.60
H-Ir.f.d.J	88° 21'	19.46

KANHAI TRACE 20.12m WIDE
 LP# 84/5



JESSIE SIMPSON

Approved.....
 Director of Surveys 20/7/13

Denotes Iron put except stated otherwise.

Note: Bearings are U.T.M. Grid based on solar observations.

Plan of a Parcel of land coloured pink in the Ward of Savana Grande

Containing zero point nine two three zero hectare

Re-Surveyed by me, with due authority, in April 2010.

Certified correct in accordance with Regulation 25 (1) of the Land Surveyors

Regulations 1998.

Checked

Entered

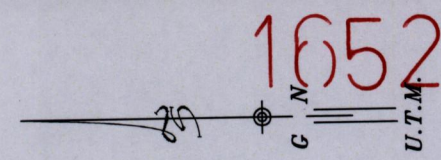


SCALE: 1:2000

Distances are in metres.

Orig. Bk. 1332:141

Ref: RPO VOL. 708 Fol. 213
 C.T VOL. 4804 Fol. 155



112