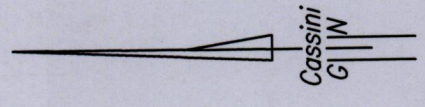


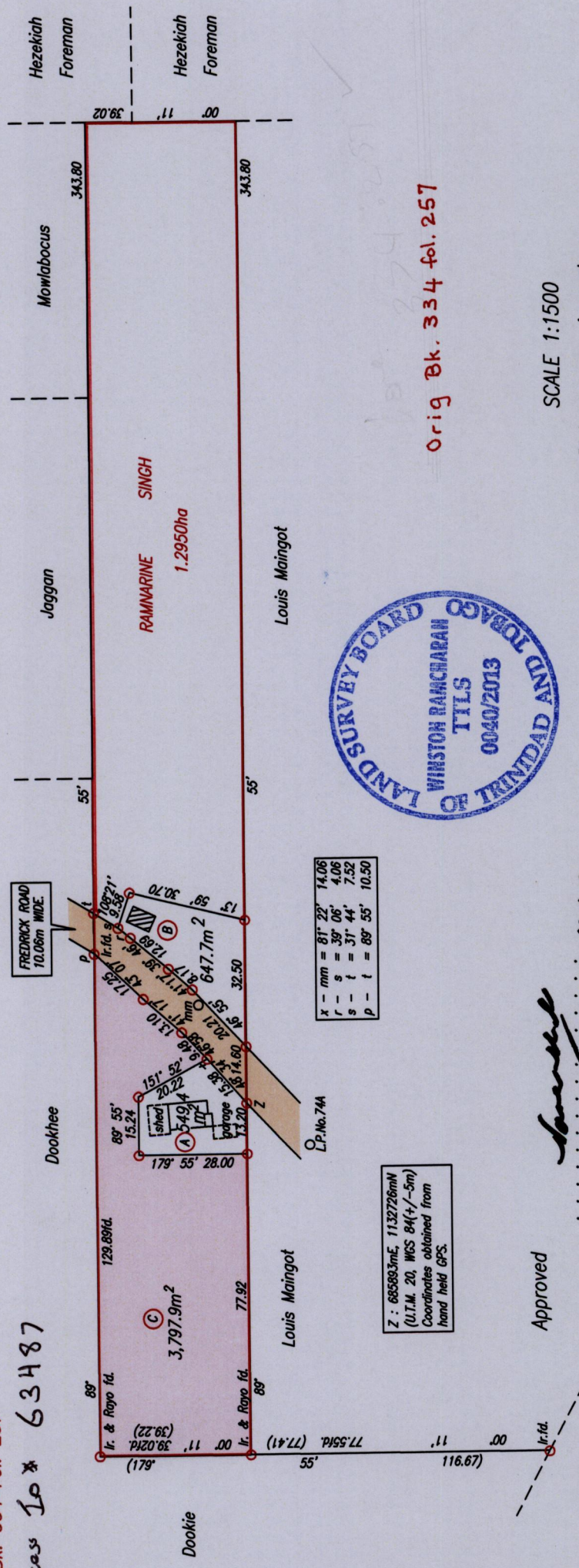
Cadastral Sheet G.10.C. 64C  
1/a  
Ward of Ortoire  
County of Victoria  
Hindustan



1652/111

C.T. Vol. 5313 Fol. 471  
R.P.O. Vol. 49 Fol. 207

Ref.: Bk. 719 Fol. 50  
Ref.: Bk. 334 Fol. 257  
Proces Io \* 63487



Orig Bk. 334 fol. 257

SCALE 1:1500

Distances are in metres  
o Denotes Iron put except otherwise stated  
Bearings are Cassini Grid based on Solar Observations

Approved  
Director of Surveys 2017/13

PLAN of a Parcel of land coloured pink in the Ward of Ortoire  
Containing three thousand, seven hundred and ninety seven point nine square metres.  
Surveyed by me, with due authority, in September, 2011  
Certified Correct in accordance with Regulation 25 (1) of the Land Surveyors' Regulations 1998,

Checked by . . . . .  
Entered on . . . . .  
Trinidad & Tobago Land Surveyor. 14<sup>th</sup> February 2013.