

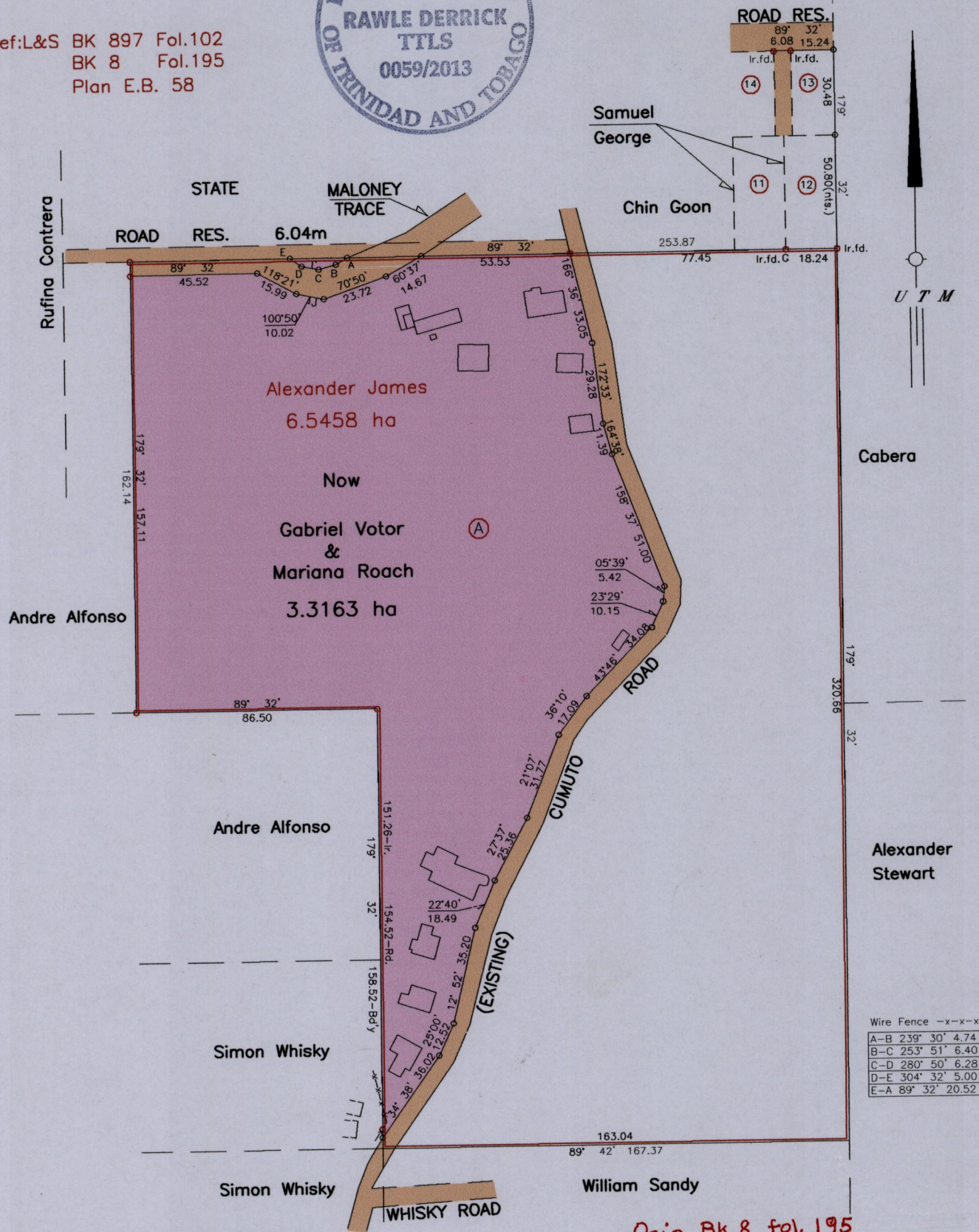
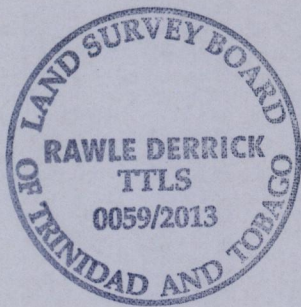
1652

Cadastral Sheet D.10.P, $\frac{35D}{2/c/2}$ 1008
Ward of San Rafael
County of St. George

R.P.O. Vol.55 Fol.511

C.T. Vol.1207 Fol.509

Ref:L&S BK 897 Fol.102
BK 8 Fol.195
Plan E.B. 58



Wire Fence -x-x-x

A-B	239° 30'	4.74
B-C	253° 51'	6.40
C-D	280° 50'	6.28
D-E	304° 32'	5.00
E-A	89° 32'	20.52

Orig Bk.8 fol.195

Approved.....
Director of Surveys 30/7/13

Ir.fd.=G:-N:1159305m
E:695045m
UTM 20, NAP Datum ±7m
GPS (Hand Held)

SCALE 1/2000

Distances are in Metres

○ Denotes No Iron put
○ Denotes Iron put except otherwise stated
Bearings are UTM Grid based on Solar Observations
Plan of a Parcel of land coloured pink in the Ward of San Raphael
Containing three point three one six three hectares
Surveyed by me with due authority, in October 2007
Certified Correct in accordance with Regulation 25 (1) of the
Land Surveyors Regulations 1998.

Checked by..... Rawle Derrick

Entered..... Trinidad & Tobago Land Surveyor July 03 2013