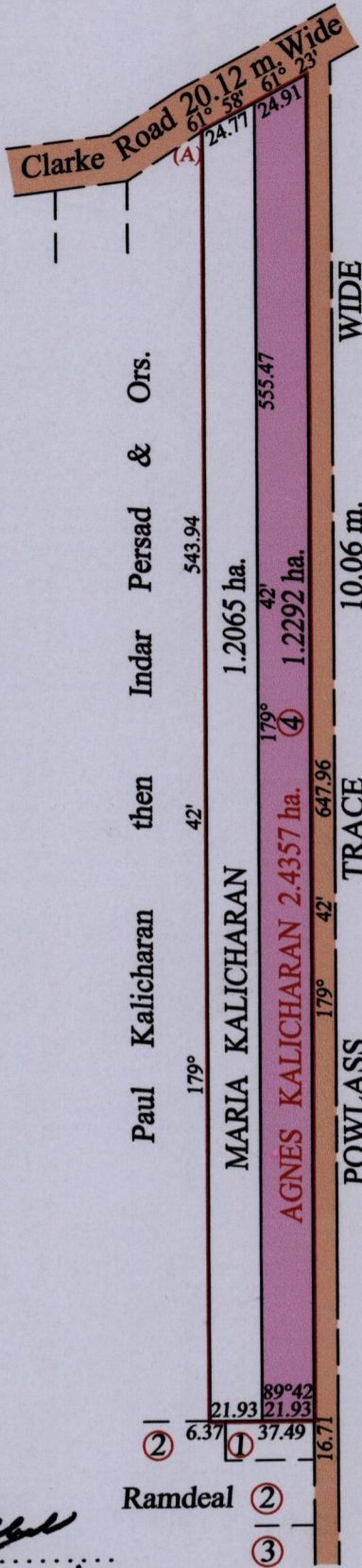


R.P.O. Vol. 566 Fol. 19  
C.T. Vol. 1388 Fol. 395  
Process ID # G7456

REMAINING PORTION PLAN

Ward of Siparia  
County of Victoria  
Cadastral Sheet G. 13. D. 64 D  
3/a&c



Vide Bk. 923 fol. 142 for Original

At Station (A)
E 0674481
N 1123377
Reading taken with
Handheld G.P.S.
U.T.M. Zone 20
Naparima
+ 10 m.

Approved *[Signature]*  
Director of Surveys 21/7/13

SCALE : 1:3000

Distances are in metres

Note: Bearings are U.T.M. grid based on solar observations  
Plan of two point four three five seven hectares originally transferred to Agnes Kalicharan, showing a portion coloured pink and containing one point two two nine two hectares being the remainder after one (1) previous transfer of another portion of the land.  
In accordance with Regulation 25(1) of the Land Surveyors Regulations 1998  
I certify that this plan represents the remaining portion

Checked by .....

Entered on ..... Trinidad & Tobago Land Surveyor 26.07.2013