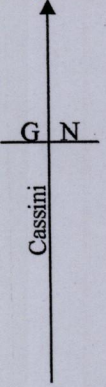


1652 / 1652

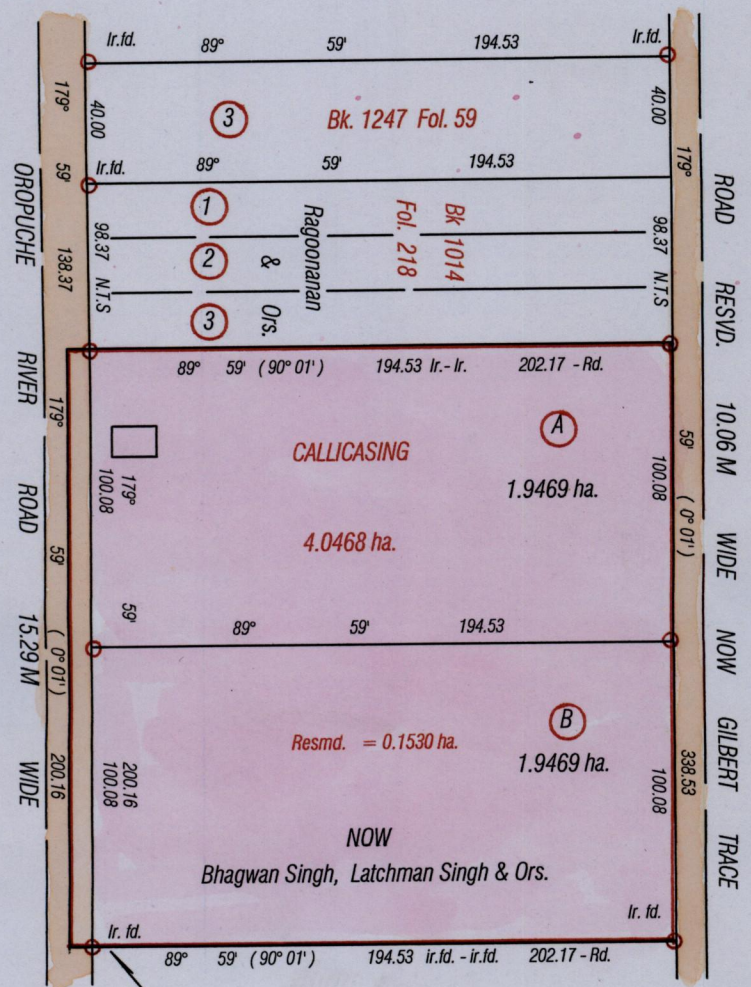
102

Cadastral Sheet (G 14 C) 64 D
County of Victoria 2 / b
Ward of Savana Grande



Process ID # 54904
R.PO Vol 208 Fol. 595
C.T Vol. Fol.

Bk. 363 Fol. 6
Vide Plan AE 79



UTM Zone 20 (Nap)
hand held GPS
± 05 0678850 E
1126951 N

Boodoo then
Savitri Ramnarine
Bk. 1249 Vol. 2 Fol. 166

Orig. Bk. 363 fol. 6



Approved: *[Signature]*
Director of Surveys 28/11/2013

Bearings are Cassini Grid based on Solar Obs.
○ Denotes iron put except otherwise stated
add
SCALE 1 / 2500
Distances are in metres

Note: To obtain compass bearing subtract minutes
PLAN of 2 Parcels of land coloured pink in the Ward of Savana Grande
Containing three point eight nine three eight hectares
Surveyed by me, with due authority, in June 2012
"Certified Correct in accordance with Regulation 25 (1) of the Land Surveyors' Regulations 1998"

Checked by *[Signature]* 22/7/2013
Entered on.....

Winston Ramcharan
Trinidad & Tobago Land Surveyor. *[Signature]* 2013