

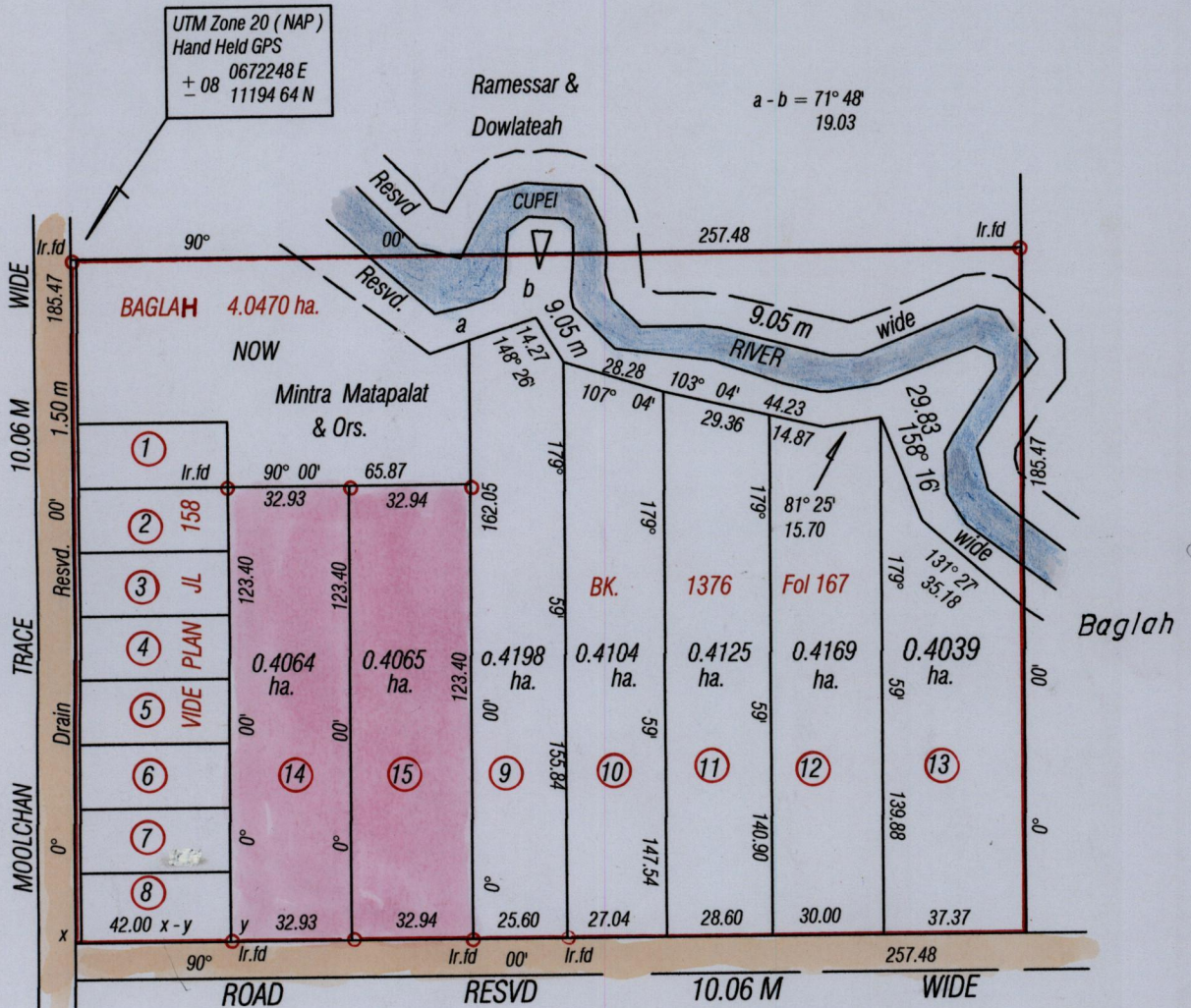
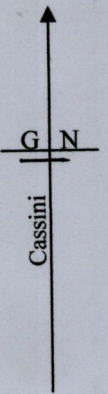
1652 1652/100 1000

Cadastral Sheet G 18 G 73 C
County of St. Patrick 2/c
Ward of Siparia

Process 10* 60395'

R.P.O Vol. 173 Fol. 65
C.T Vol. 283 Fol. 205

Bk. 711 fol. 101



Approved.....
Director of Surveys 28/7/13

Orig Bk. 711 fol. 101

Bearings are Cassini Grid based on Solar Obs.
○ Denotes iron put except otherwise stated
add

SCALE 1 / 2000
Distances are in metres

Note: To obtain compass bearing subtract minutes
PLAN of 2 Parcels of land coloured pink in the Ward of Siparia
Containing zero point eight one two nine hectares
Surveyed by me, with due authority, in September 2012
In accordance with Regulation 25 (1) of the Land Surveyors' Regulations 1998, I certify
that this plan is correct

Checked by.....
Entered on.....

Trinidad & Tobago Land Surveyor. 15th November 2012