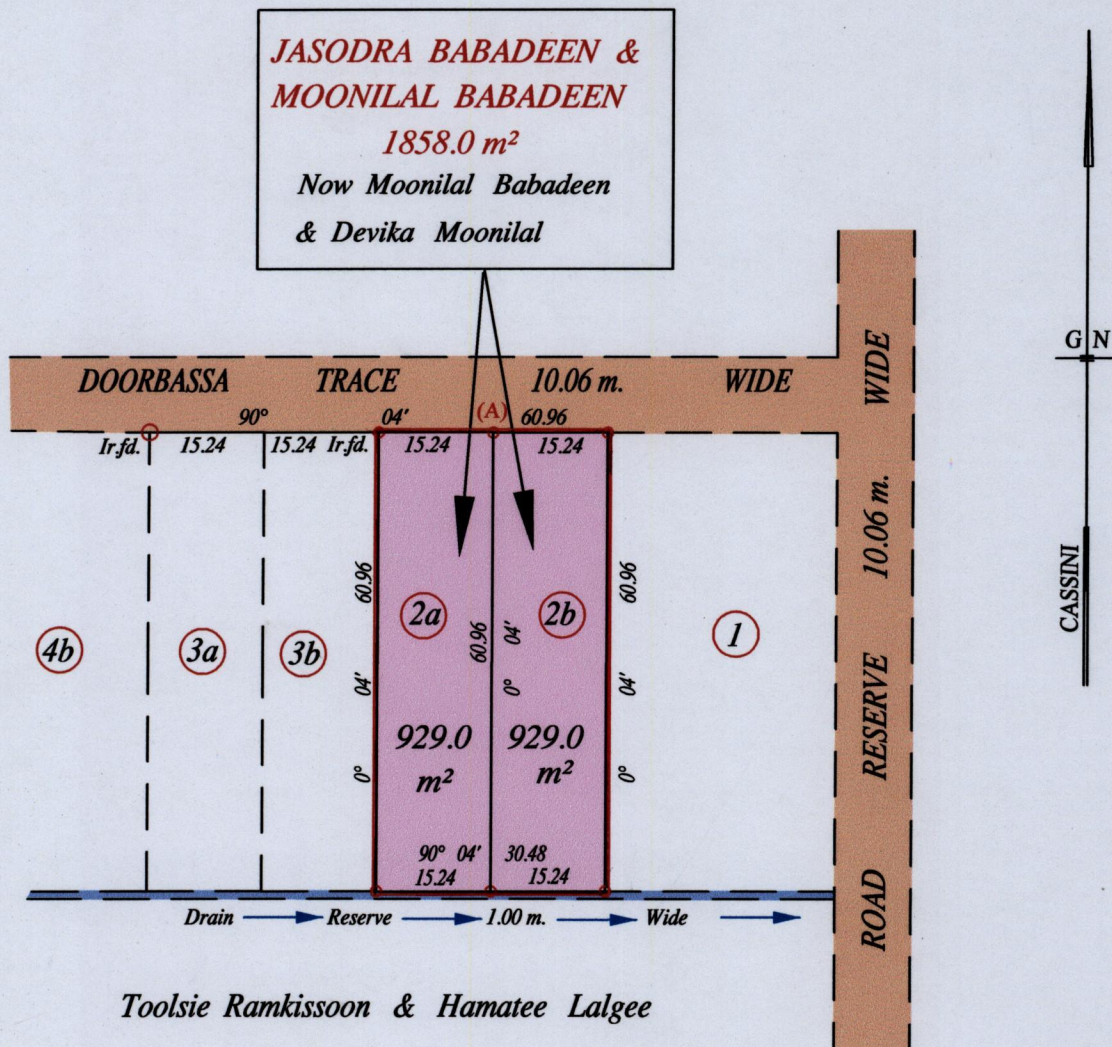


Vol. 5493 Fol. 201
R.P.O. Vol. 121 Fol. 585
C.T. Vol. 4374 Fol. 397

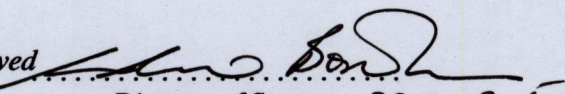
Ward of Siparia
County of St. Patrick
Cadastral Sheet (G.12.H) 63.E.
1/d

Process ID# 31626



Vide Bk. 1145 fol. 131
Vide Bk. 1163 fol. 183

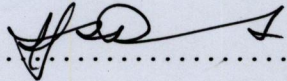
At Station (A)
E 0665790
N 1125696
Reading taken with
Handheld G.P.S.
Garmin 76S
U.T.M. Zone 20
Naparima
± 10 m

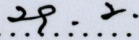
Approved 
Director of Surveys 2012.3.5

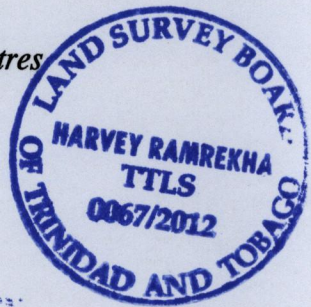
○ Denotes Iron put except stated otherwise.

SCALE : 1:1000

Note: Bearings are cassini grid based on solar observations Distances are in metres
PLAN of 2 Parcels of land coloured pink in the Ward of Siparia
Containing together one thousand eight hundred and fifty eight point zero square metres
Surveyed by me, with due authority, in March 2010 for Mr. Moonilal Babadeen
In accordance with Regulation 25 (1) of the Land Surveyors' Regulations 1998,
I certify that this plan is correct.

Checked by HR-01/03/12 

Entered on CMIS 10-07-2012 Trinidad & Tobago Land Surveyor  2012



LOT No.	CT. VOLUME & FOLIO	NAMES
2a	5493 fol. 207	MOONILAL BABADEEN & DEVIKA MOONILAL
2b	5493 fol. 213	MOONILAL BABADEEN & DEVIKA MOONILAL



1395/157
NOO 1650/97