

R.P.O. Vol. 420 Fol. 453  
 C.T. Vol. Fol.  
 C-T Vol 5505 Fol 199.

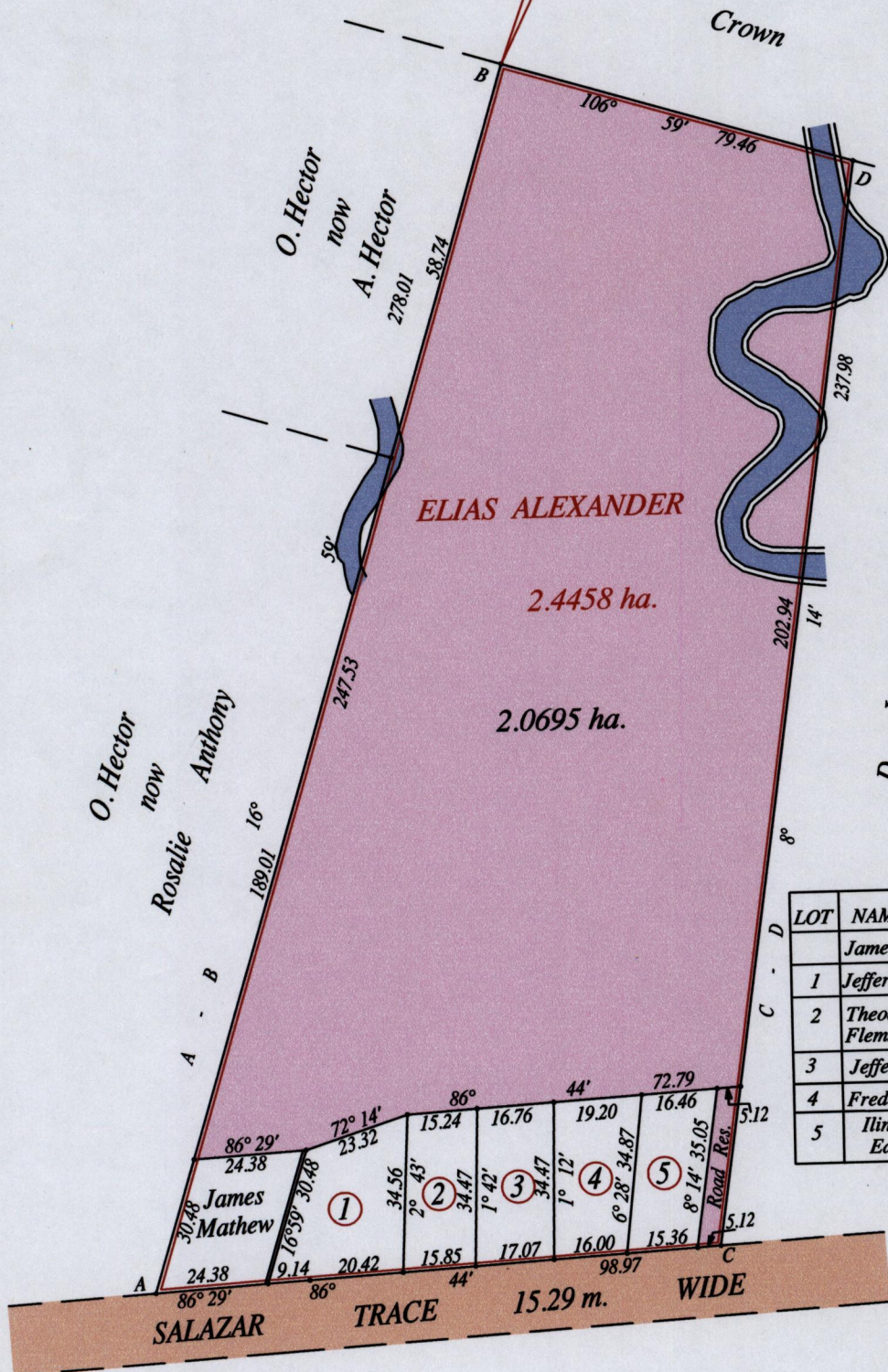
REMAINING PORTION

1650

94

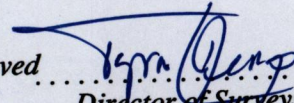
Ward of La Brea  
 County of St. Patrick  
 Cadastral Sheet ( F.15.M. ) 62.D.  
 4/d

E 0645820  
 N 1122715  
 Reading taken with  
 Handheld G.P.S.  
 Garmin 76S  
 U.T.M. 20 Naparima



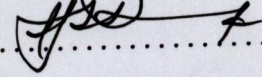
LOT	NAME	AREA	C.T. VOL.	FOL.
	James Mathew	696.8 m <sup>2</sup>	1004	217
1	Jeffers Alexander	799.6 m <sup>2</sup>	2719	209
2	Theodora Nesbitt Flemming	534.2 m <sup>2</sup>	2719	211
3	Jeffers Alexander	581.4 m <sup>2</sup>	2719	213
4	Frederica Renaud	604.9 m <sup>2</sup>	2719	215
5	Iline Jestine Edwards	546.6 m <sup>2</sup>	2719	217

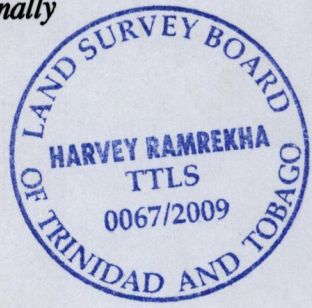
Vide Bk. 480 fol. 286  
 Vide Bk. 1211 fol. 78

Approved   
 Director of Surveys  
 2009.9.17

SCALE : 1:1500

Note: Bearings are cassini grid based on solar observations Distances are in metres  
 This is a true copy of a diagram of two point four four five eight hectares, originally transferred to Elias Alexander, shewing a portion coloured pink and containing two point zero six nine five hectares being the remainder after six (6) previous transfer of another portion of the land.  
 In accordance with Regulation 25 (1) of the Land Surveyors' Regulations 1998, I certify that this plan is correct.

Checked by  15/9/09



Entered on ..... Trinidad & Tobago Land Surveyor ..... 9.09.2009

LOT #	C.T. Vol & Folio	Names.
1		
2		
3		
4		
5		



1659/94  
+500/2003