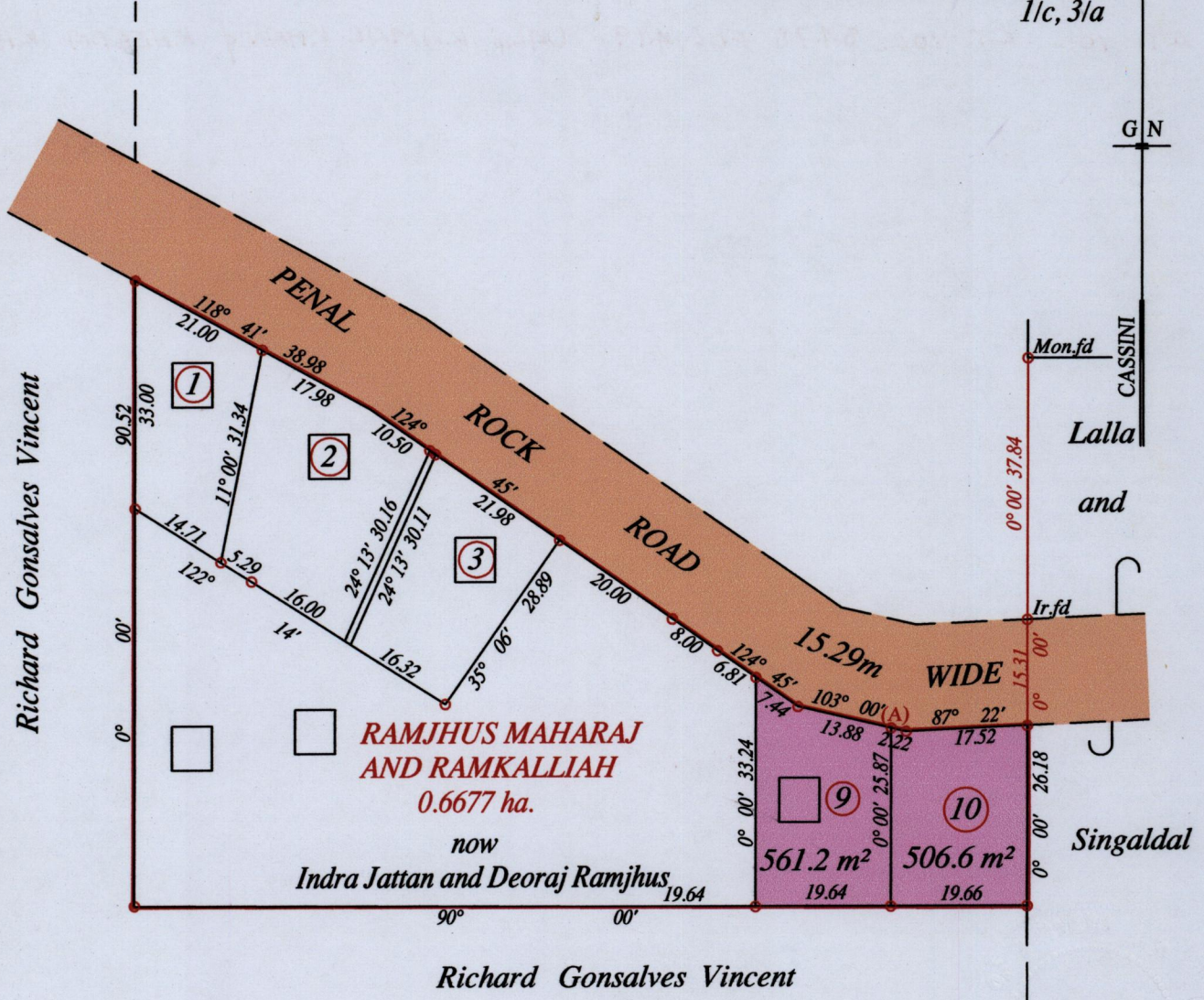


1650

92 53

Vol. 5478 Fol. 401  
PROCESS ID# 44438  
R.P.O. Vol. 152 Fol. 137  
C.T. Vol. 1193 Fol. 153

Ward of Siparia  
County of St. Patrick  
Cadastral Sheet ( G.19.E ) 74.A  
1/c, 3/a



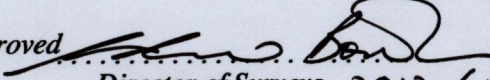
SEE J.L. 188

- ① C.T. Vol. 3748 Fol. 247
- ② C.T. Vol. 4668 Fol. 141
- ③ C.T. Vol. 3748 Fol. 255



Vide Bk. 897 fol. 13  
Vide Bk. 923 fol. 237

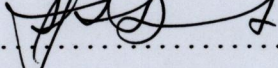
At Station (A)  
E 0674900  
N 1119195  
Reading taken with  
Handheld G.P.S.  
U.T.M. Zone 20  
Naparima  
+ 10 m.

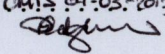
Approved   
Director of Surveys 2012.6.29

o Denotes Iron put except stated otherwise.

SCALE : 1:1000

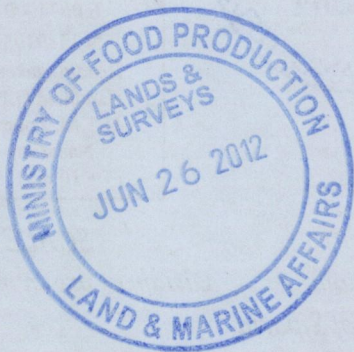
Note: Bearings are cassini grid based on solar observations Distances are in metres  
PLAN of 2 Parcels of land coloured pink in the Ward of Siparia  
Containing together one thousand and sixty seven point eight square metres  
Surveyed by me, with due authority, in September 2008 at the request of Kheeda Khan  
In accordance with Regulation 25 (1) of the Land Surveyors' Regulations 1998,  
I certify that this plan is correct.

Checked by  27/6/2012

Entered on  04-08-2013 Trinidad & Tobago Land Surveyor 2012

LOT. 9 - CT. VOL. 5478 FOL. 411 - CHANDRA MAHARAI & KHEEDA KHAN

LOT. 10 - CT. VOL. 5478 FOL. 419 - DALE KAMAL KHAN & KHEEDA KHAN



now 1650/92  
+433/58