

R.P.O. Vol. 7 Fol. 603  
C.T. Vol. 838 Fol. 67

165(1)

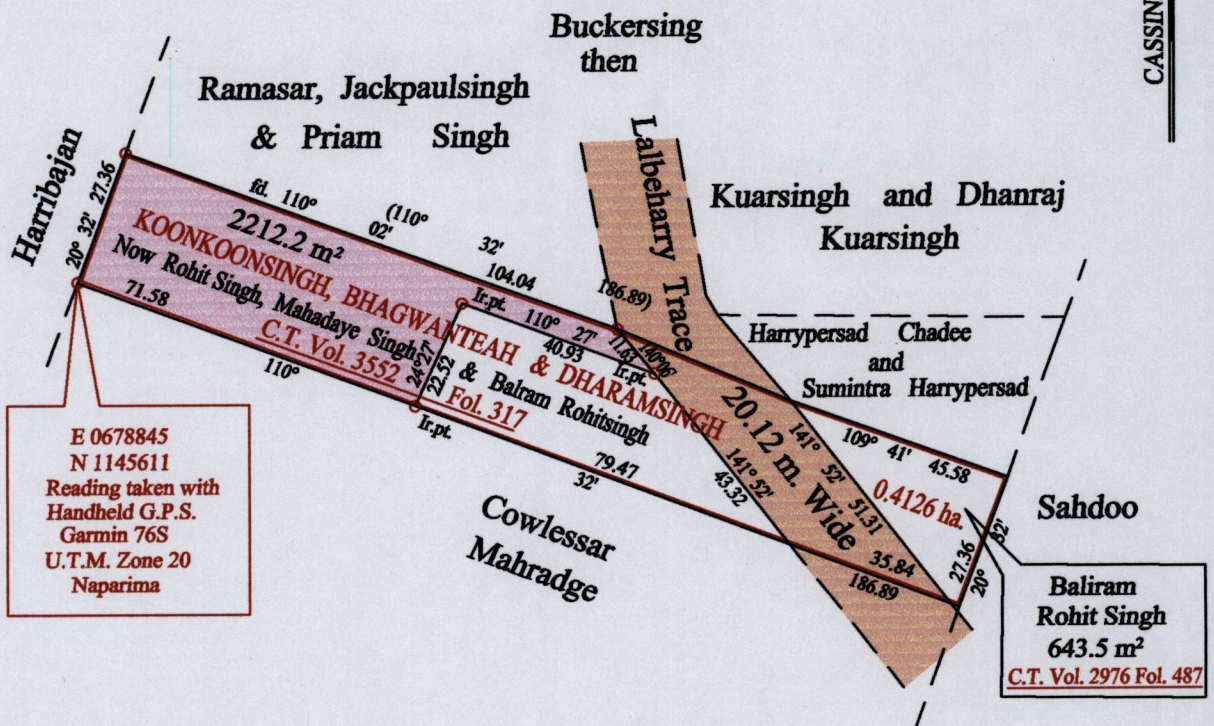
Ward of Naparima  
County of Victoria  
Cadastral Sheet ( G.8.O & G.13.C. ) 63.C.  
3/d

74

Vol. 5398 Fol. 243

G N

CASSINI



E 0678845  
N 1145611  
Reading taken with  
Handheld G.P.S.  
Garmin 76S  
U.T.M. Zone 20  
Naparima

Baliram  
Rohit Singh  
643.5 m²  
C.T. Vol. 2976 Fol. 487

Approved *[Signature]*  
Director of Surveys  
2009-8-25

Vide Bk. 991 fol. 114  
Vide Bk. 1179 fol. 38  
Vide Bk. 1200 fol. 31

o Denotes Iron found except stated otherwise.

SCALE : 1:1500

Note: Bearings are cassini grid based on solar observations Distances are in metres

PLAN of a Parcel of land coloured pink in the Ward of Naparima  
Containing two thousand two hundred and twelve point two square metres  
Surveyed by me, with due authority, in July 2006  
In accordance with Regulation 25 (1) of the Land Surveyors' Regulations 1998,  
I certify that this plan is correct.

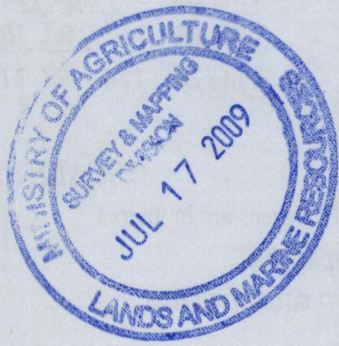
Checked by *[Signature]*  
Trinidad & Tobago Land Surveyor

Entered on ..... 16.07.2009





CT. Vol. 5398 Fol. 245 - Balram Singh



now 1650.74  
T500/163