

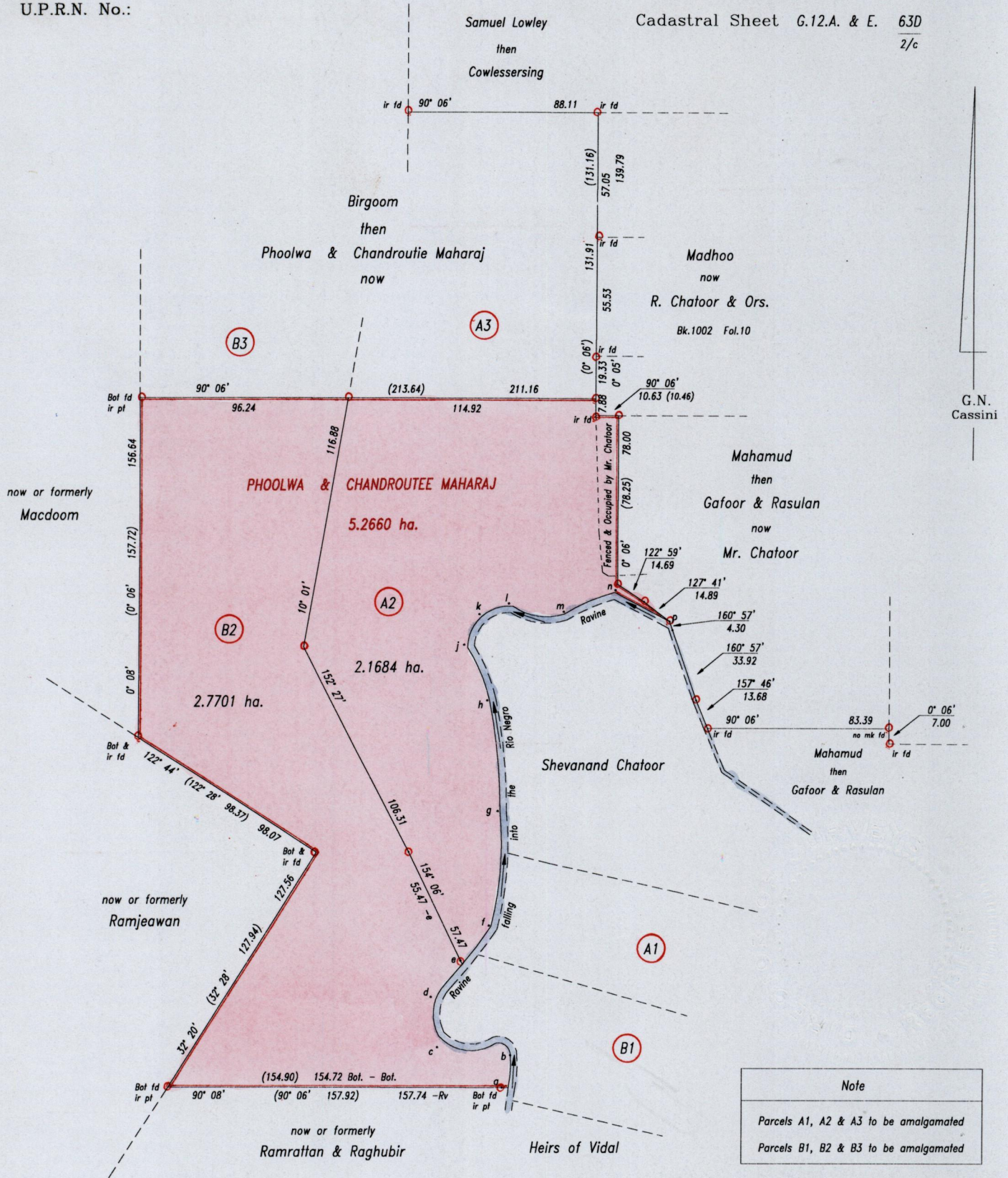
R.P.O. Vol. 23 Fol. 577  
 C.T. Vol. 3495 Fol. 239  
 U.P.R.N. No.:

165(1)

73

73

Ward of Siparia  
 County of St. Patrick  
 Cadastral Sheet G.12.A. & E. 63D  
 2/c



Approved  
 [Signature]  
 Director of Surveys  
 2005-3-24

SCALE 1: 2500

Distances are in metres

○ Denotes iron put except otherwise stated

Bearings are Cassini Grid based on Solar Observations

PLAN of 2 parcels of land coloured pink in the Ward of Siparia  
 Containing together four point nine three eight five hectares  
 Surveyed by me, with due authority, in May 2000 & October 2003

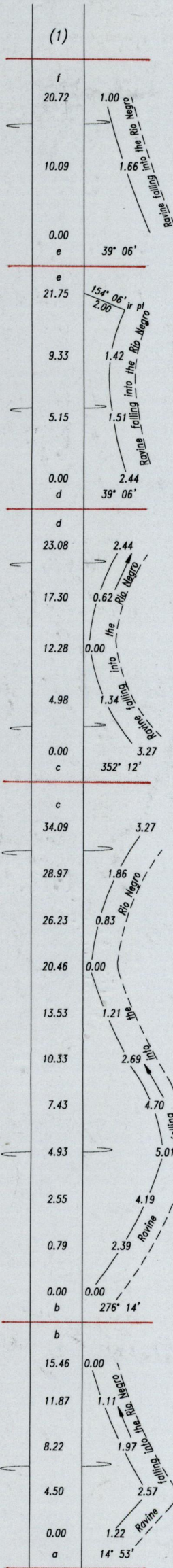
In accordance with Regulation 25(1) of the Land Surveyors' Regulations 1998, I certify that this plan is correct.

Checked by [Signature]  
 Entered .....

[Signature]  
 Trinidad & Tobago Land Surveyor 14/10/2004

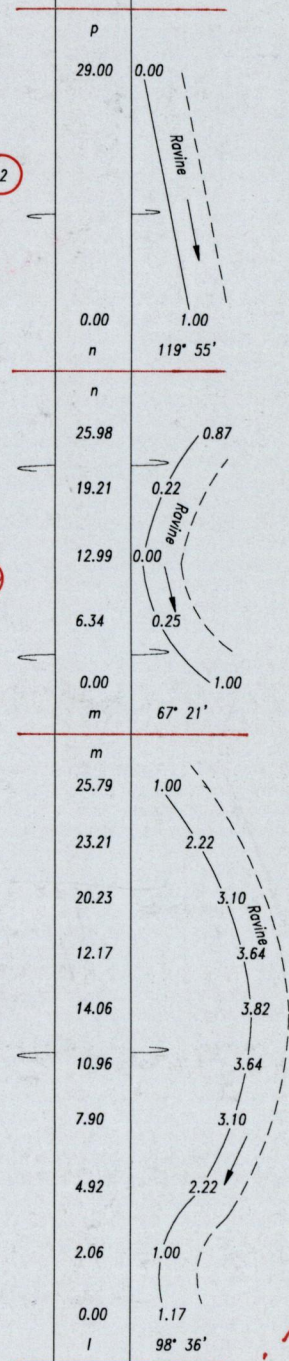
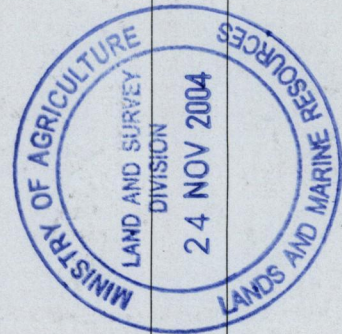
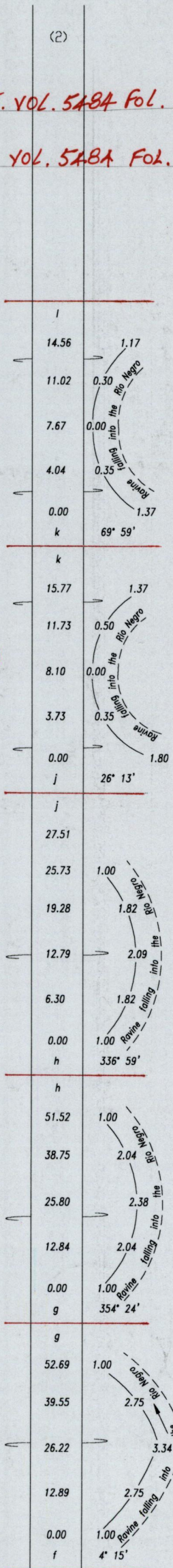






A2 . CT. VOL. 584 FOL. 385 - CHANDROLTIE SEETA MAHARAI

B2 . CT. VOL. 584 FOL. 389 - GAYA RAMOLTAH



Now 1650:73  
HGS-2023







