

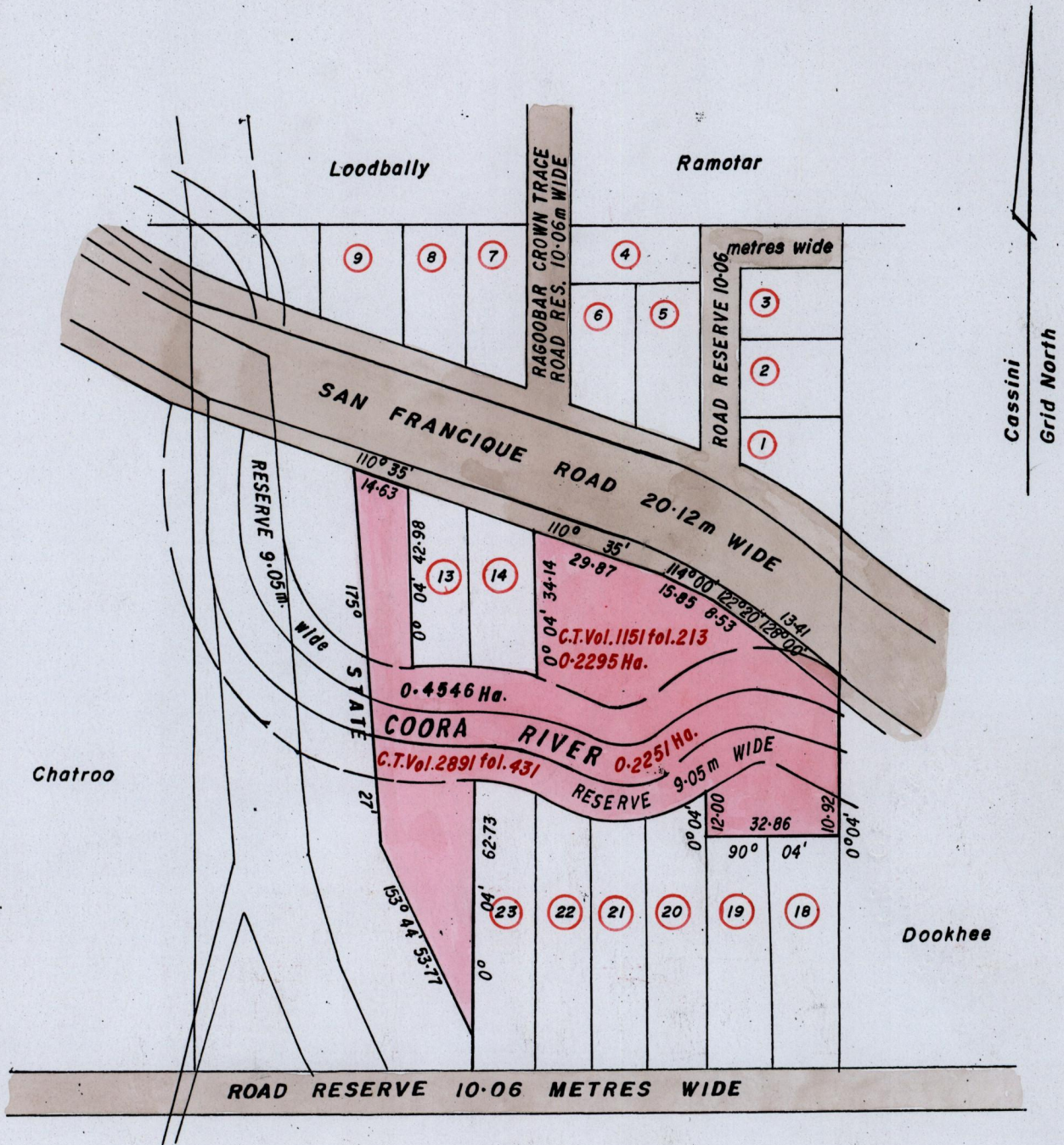
1650

63

CONSOLIDATED PLAN

Ct. Vol. 5193 Fol. 301

Ward of Siparia
County of St. Patrick
Cadastral Sheet G.12.L & G.13.E, 3/c
Vide Bk. 964 fol. 57, Bk. 1137 fol. 197
M.J. 63, Bk. 1238 fol. 202



Approved

[Signature]
Director of Surveys 2006.1.17

o Denotes Iron put

SCALE 1/1500

Distances are in metres

Note: To Obtain compass bearings subtract 3 minutes

PLAN of a Parcel of land coloured PINK in the Ward of Siparia
Containing zero point four five four six hectares

Prepared by me, with due authority, in March 2001 with 2 parcels
to be consolidated.

In accordance with Regulation 25 (1), of the Land Surveyors Regulations 1998.
I certify that this plan is correct.



Checked by *[Signature]* 2006.1.17

[Signature]
Trinidad and Tobago Land Surveyor 13th January 2006

Entered

CT. VOLUME 5193 FOLIO 301 - SOOKDEO RAMNARINE



1358/137
NO. 1650/63