

R.P.O. Vol. 154 fol. 65
C.T. Vol. 1143 fol. 45
Vol. 5443 Fol. 325

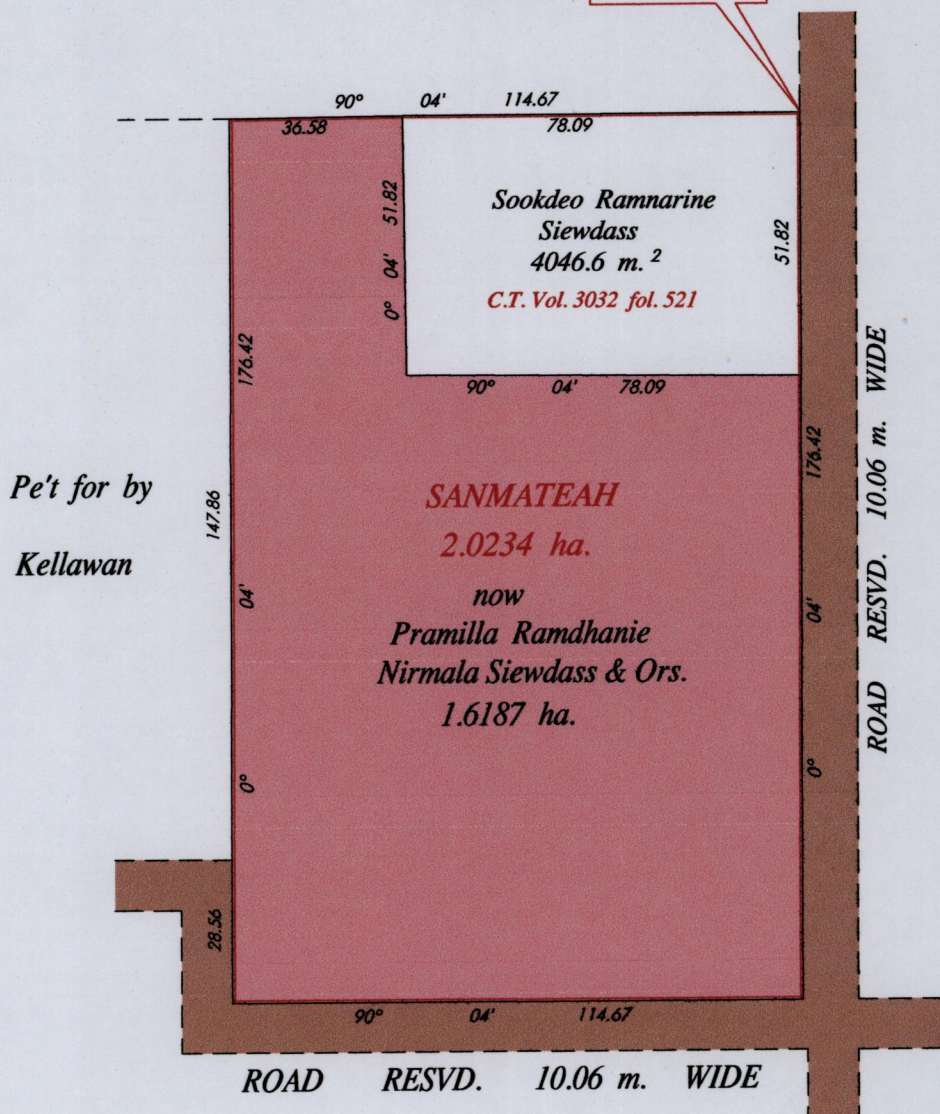
REMAINING PORTION

1650
61
Ward of Siparia
County of St. Patrick
Cadastral Sheet (G.12 L.) 63 E.
4/a

Process ID #47944

N. 1124532
E. 666385
Hand Held G.P.S.
U.T.M. Naparima
Zone 20
+/- 5.00 m.

Beerbul



Pe't for by
Kellawan



Approved

[Signature]
Director of Surveys 2012.2.10

Bk. 476 fol. 251
Bk. 1157 fol. 218

SCALE : 1: 1500

Note: Bearings are cassini grid based on solar observations Distances are in metres
This is a true copy of a diagram of two zero two three four hectares, originally transferred to Sanmateah, shewing a portion coloured pink containing one point six one eight seven hectares being the remainder after one (1) previous transfer of another portion of the land. In accordance with Regulation 25 (1) of the Land Surveyors' Regulations 1998, I certify that this plan is correct.

Checked by *[Signature]*

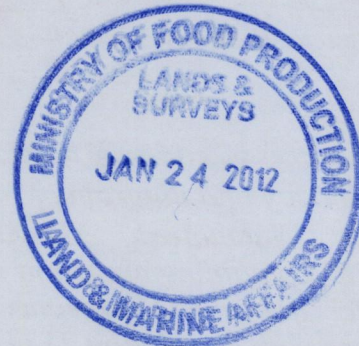
Entered on *[Signature]* MIS 16-07-2011 Trinidad & Tobago Land Surveyor *[Signature]* 16th January 2012

139

1395/139

2012

1395/139



now 1650/61
~~1395/139~~