

1050

REMAINING PORTION

51

R.P.O. Vol. 103 Fol. 649

C.T. Vol. 981 Fol. 233

Bk. 999 fol. 16

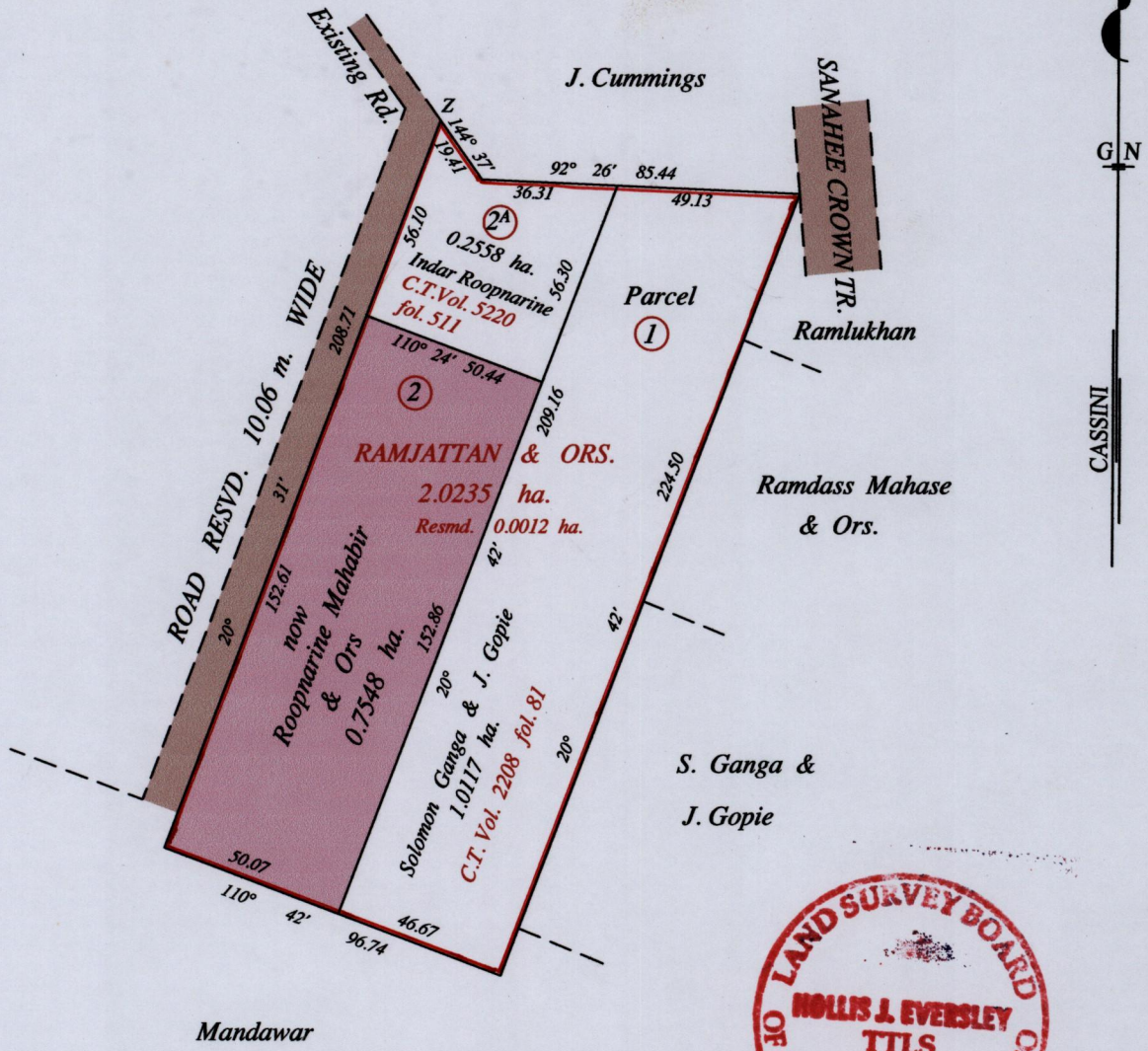
Vol. 5443 Fol. 95

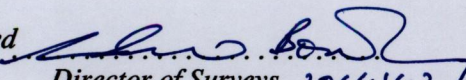
Ward of Naparima

County of Victoria

Cadastral Sheet ( G.13 G. ) 63.F.  
2/c

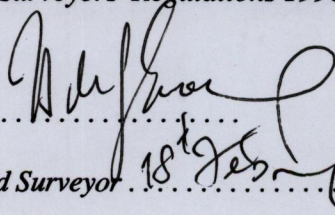
Z = E. 672236  
N. 1126221  
Handheld G.P.S.  
U.T.M. 20 Naparima  
± 5m.



Approved   
Director of Surveys 2011.4.21

SCALE : 1:2000

Note: Bearings are cassini grid based on solar observations Distances are in metres  
This is a true copy of a diagram of two point zero two three five hectares, originally transferred to RAMJATTAN & ORS. , shewing a portion coloured pink and containing zero point seven five four eight hectare being the remainder after two (2) previous transfers and one (1) Resumption of another portion of Land. In accordance with Regulation 25 (1) of the Land Surveyors' Regulations 1998, I certify that this plan is correct.

Checked by  14/3/11

Entered on ..... Trinidad & Tobago Land Surveyor ..... 2011



Original Bk. 999:16



new 1650/51  
~~1376/70~~