

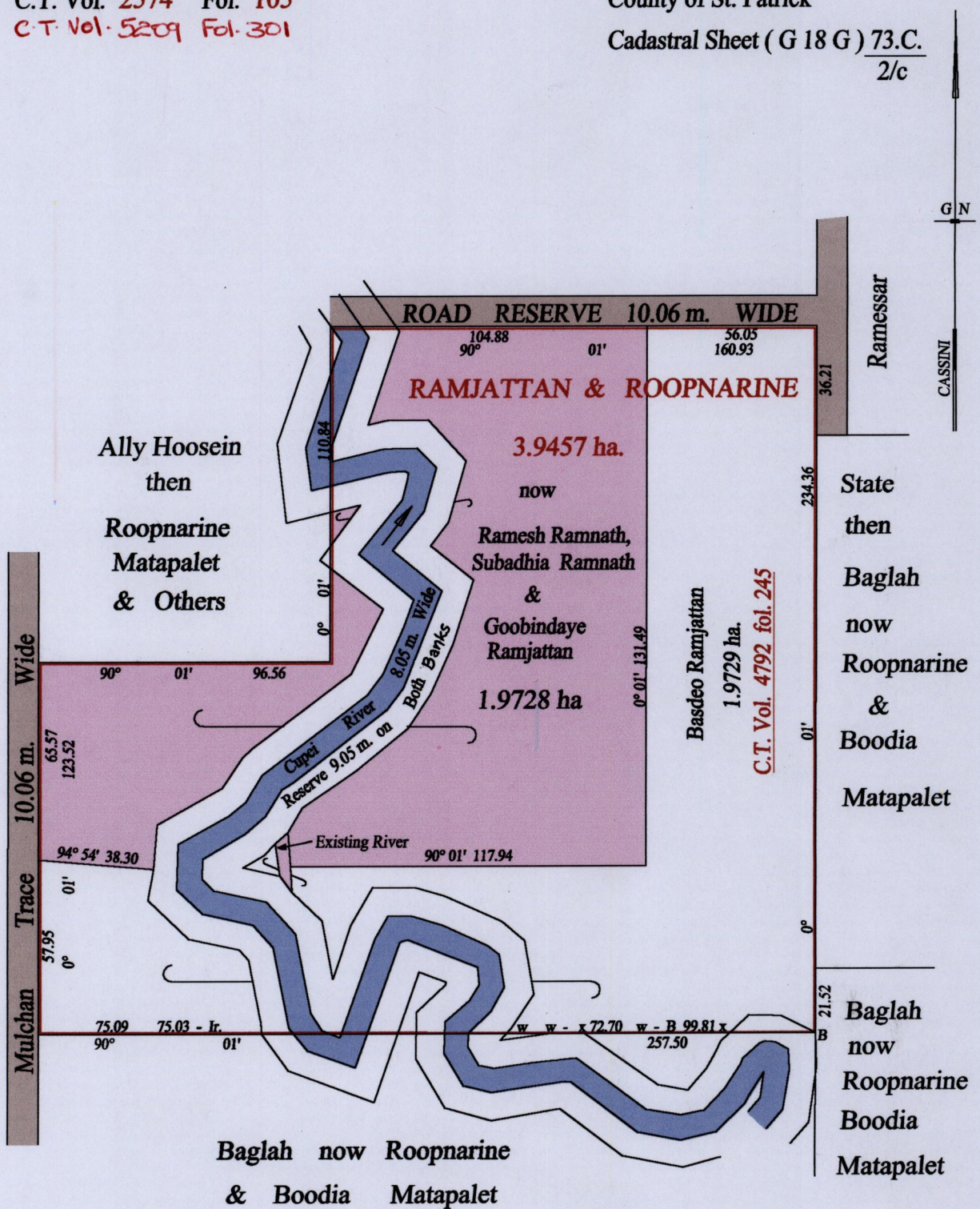
1650

5

REMAINING PORTION

R.P.O. Vol. 173 Fol. 65  
C.T. Vol. 2574 Fol. 105  
C.T. Vol. 5209 Fol. 301

Ward of Siparia  
County of St. Patrick  
Cadastral Sheet ( G 18 G ) 73.C.  
2/c



Vide Bk. 711 fol. 101

Approved *[Signature]*  
Director of Surveys  
2807.6.26

SCALE : 1:2000

Note: Bearings are cassini grid based on solar observations Distances are in metres

This is a true copy of a diagram of three point nine four five seven hectares, originally transferred to Ramjattan & Roopnarine, shewing a portion coloured pink and containing one point nine seven two eight hectares being the remainder after one (1) previous transfer of another portion of the land. In accordance with Regulation 25 (1) of the Land Surveyors' Regulations 1998, I certify that this plan is correct.

Checked by *[Signature]* *[Signature]*

Entered on ..... Trinidad & Tobago Land Surveyor ..... 15-05-2007



MINISTRY OF AGRICULTURE  
LAND AND SURVEY  
DIVISION  
18 JUN 2007  
LANDS AND MARINE  
RESOURCES

1650/5  
+386/42