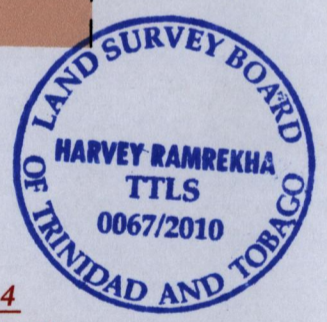
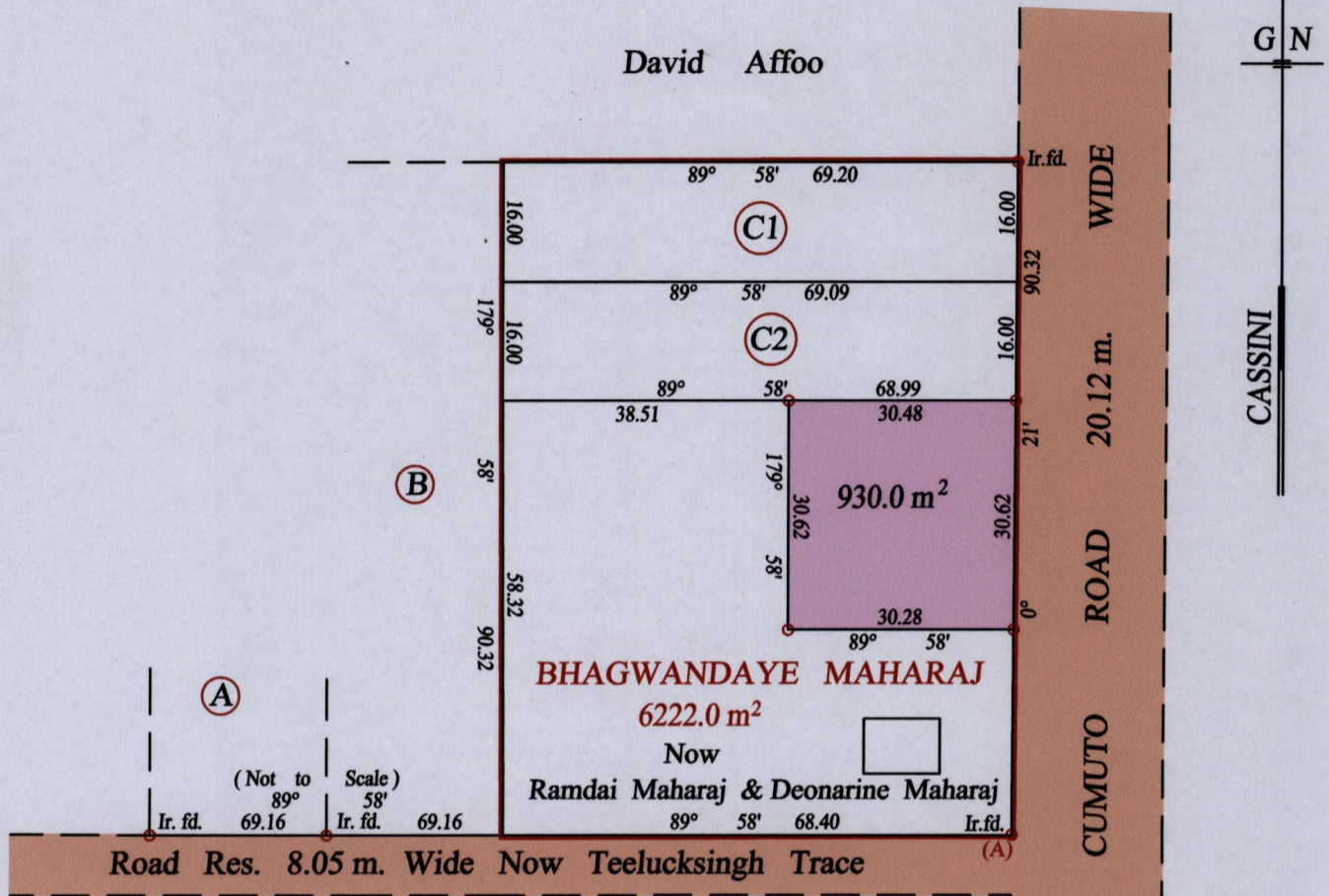


1650/47  
1650

47

R.P.O. Vol. 404 Fol. 587  
C.T. Vol. 2110 Fol. 57  
Vol. 5345 Fol. 527

Ward of Savana Grande  
County of Victoria  
Cadastral Sheet ( G.14.D ) 64.E.  
1/a



At Station (A)  
E 0680884  
N 1127145  
Reading taken with  
Handheld G.P.S.  
U.T.M. Zone 20  
Naparima  
± 5 m.

Vide Bk. 384 fol. 4  
Vide Bk. 1005 fol. 207  
Vide Bk. 1247 fol. 70

Approved Director of Surveys 2010.8.22

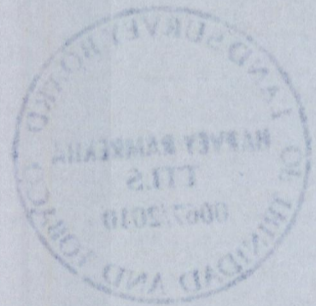
SCALE : 1:1000

o Denotes Iron put except stated otherwise.  
Note: Bearings are cassini grid based on solar observations Distances are in metres  
PLAN of a Parcel of land coloured pink in the Ward of Savana Grande  
Containing nine hundred and thirty point zero square metres  
Surveyed by me, with due authority, in September 2004  
In accordance with Regulation 25 (1) of the Land Surveyors' Regulations 1998,  
I certify that this plan is correct.

Checked by 24/8/10

Entered on ..... Trinidad & Tobago Land Surveyor ..... 2010

CT. VOL. 5345 FOL. 529 - GLEV CLYDE RAMPERSAD



now 1650/47  
1336/21