

Process ID# 39158

R.P.O Vol. 235 Fol. 165

C.T. Vol. 4456 Fol. 11

CT. Vol. 5428 Fol. 357

1650

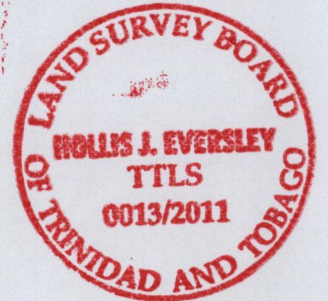
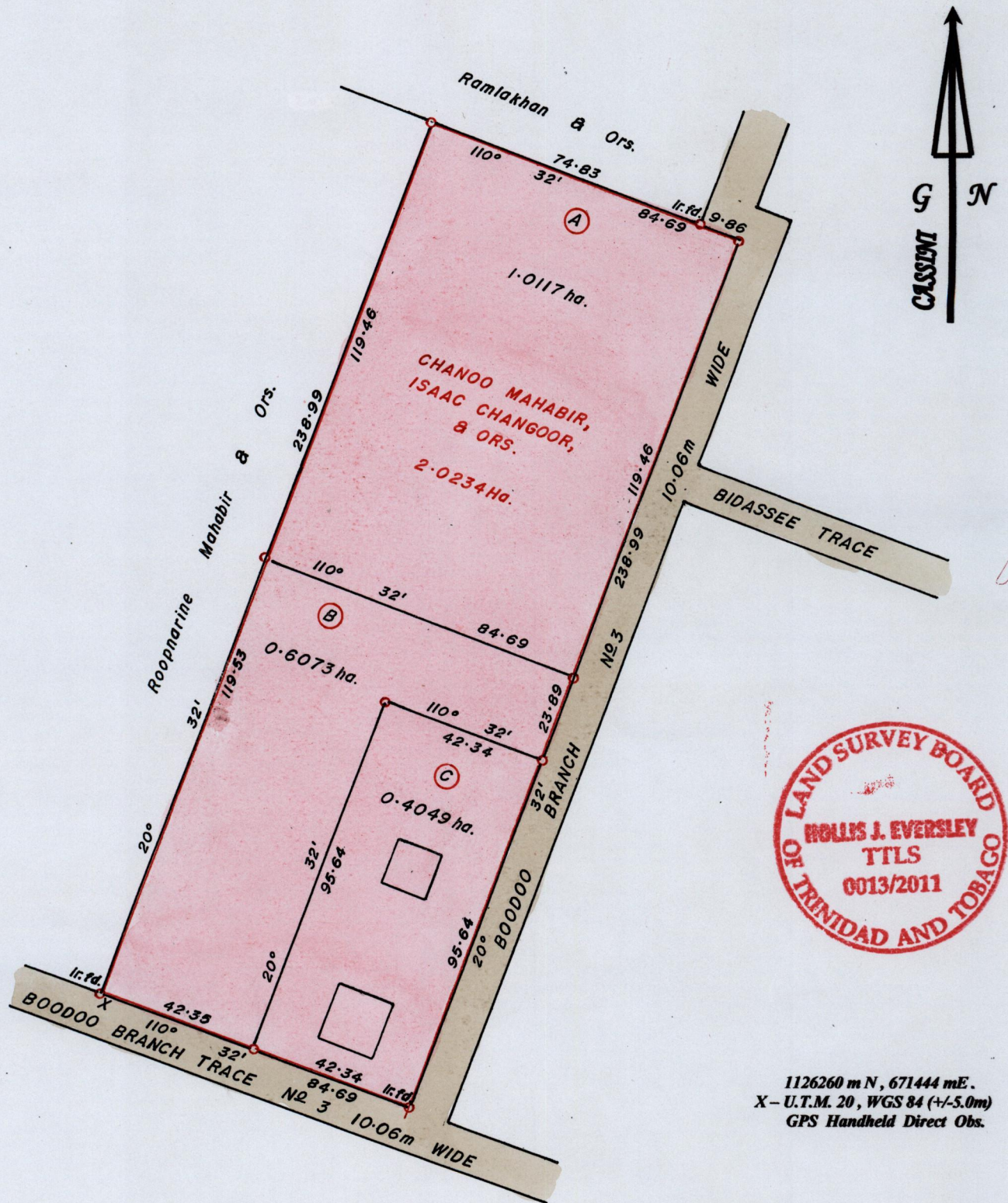
Ward of Naparima.

County of Victoria.

Cadastral Sheet G.13.C. 63F

1/b

46



1126260 m N, 671444 m E.
 X - U.T.M. 20, WGS 84 (+/-5.0m)
 GPS Handheld Direct Obs.

BK. 419 Fol. 321

SCALE 1 : 1500.

Distances are in METRES

o Denotes Iron Put except otherwise stated
 Bearings are Cassini Grid based on Solar Observations.

Approved *[Signature]*
 Director of Surveys. 2011.9.12

**PLAN of 3 Parcels of land coloured in PINK in the Ward of Naparima.
 Containing together two point zero two three nine hectares.
 Surveyed by me, with due authority, in July 2009.
 In accordance with Reg. 25(1) of the Land Surveyors' Regulations 1998,
 I certify that this plan is correct.**

Checked by *[Signature]*

Entered CMIS 04-12-2012

[Signature]
 Trinidad and Tobago Land Surveyor..... 2011.

Original Bk. 419:321

Board of Supervisors
County of Victoria
Cadastral Sheet G.R.C. 42E
R.P.O. Vol. 213
C.T. Vol. 418

LOT No.	CT. VOLUME & FOLIO	NAMES
A	5428 fol. 375	ISAAC, CHINTA, SH CH CHANGOOR & ORS.
B	5428 fol. 377	CHANARDAYE BOODRAM & JAIKARAN MAHABIR
C	5428 fol. 379	HARRICHARAN MAHABIR



Now 1050/AG
1376/199