

107 165(1) 4027 127
REMAINING PORTION

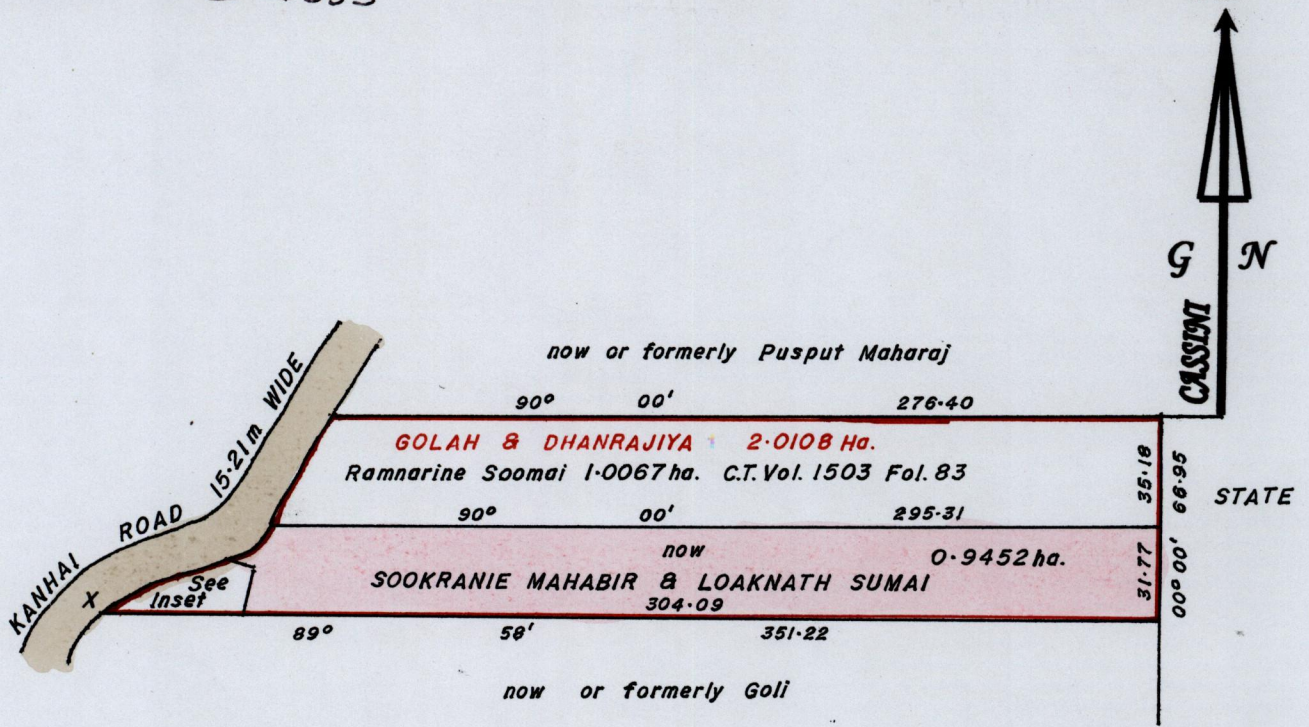
R.P.O Vol. 693 Fol. 199
 C.T. Vol. 5441 Fol. 265

Ward of Moruga.
 County of Victoria.
 Cadastral Sheet G.14.G. 64D

4()

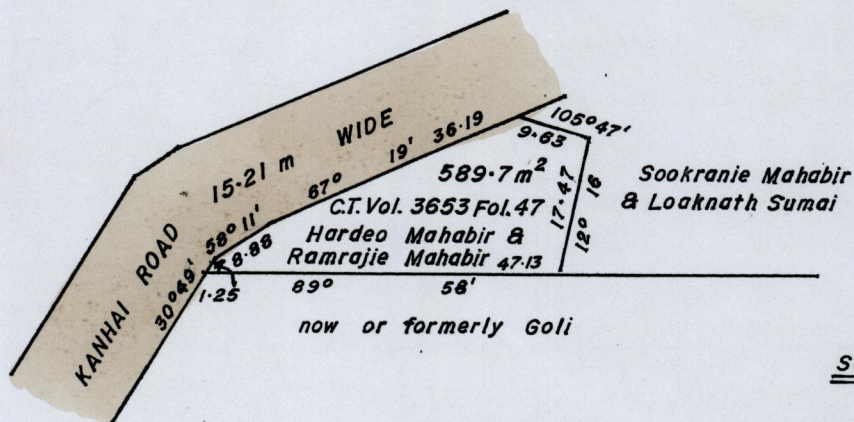
Process ID # 35553

4/a.



Scale: 1/2500.

INSET



Scale: 1/1000.

X

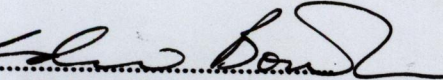
1124824 mN, 677641 mE
 U.T.M. 20, WGS 84 (+/- 5.0m)
 GPS Handheld Direct Obs.

Bk. 940 : 25.

" 1219 : 76.

SCALE 1 : 2500. & 1 : 1000.

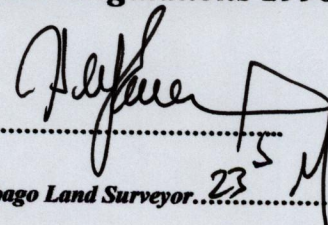
Distances are in METRES

Approved: 
 Director of Surveys. 2011.6.2

This is a true copy of a diagram of two point zero one zero eight hectares, Originally transferred to GOLAH & DHANRAJIYA showing a portion, Coloured pink and containing zero point nine four five two hectares, being the remainder, after two previous transfers of another portion of the land. In accordance with Reg. 25(1) of the Land Surveyors' Regulations 1998, I certify that this plan is correct.

Checked by MAL 26/5/2011

Entered CMS 14-09-2012


 Trinidad and Tobago Land Surveyor. 23⁵ Mal 2011.

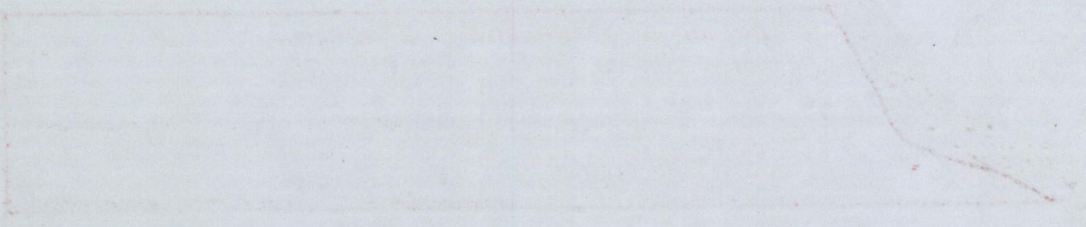
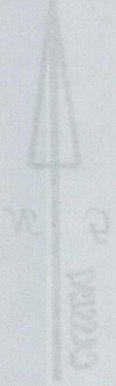
Original No. 1219/76

REMAINING PORTION

Ward of Moruga
County of Victoria
Cadastral Sheet C.14.C. 64D

R.P.O. Vol. 893 Fol. 199
C.E. Vol. Fol.

CT. Vol. 5441 Fol. 265 - SOOKRANIE MAHABIR & LOAKNATH SUMAI



X
G.S. Headed Down On
C.T. No. 50 W. 22 341-1-2500

RI 940-12
1219/76

SCALE 1:2500 & 1:1000
Dimensions in METRES

This is a copy of the original plan of the land shown in the plan of the land showing a portion of two point zero one zero eight hectares. GOLAH & DHARAVATA showing a portion of zero point nine four five two hectares, being previous transfers of another portion of the land. In accordance with section 25(1) of the Land Surveyors' Regulations 1988, I certify that this plan is correct.



Checked by: _____
Signed: _____
2011

Now 1650/40
1376/127